

Datasheet for ABIN5065986  
**anti-ATG4A antibody (AA 102-113) (Biotin)**[Go to Product page](#)

## 2 Images

## Overview

Quantity:	100 µg
Target:	ATG4A
Binding Specificity:	AA 102-113
Reactivity:	Human
Host:	Rabbit
Clonality:	Polyclonal
Conjugate:	This ATG4A antibody is conjugated to Biotin
Application:	Western Blotting (WB), Immunofluorescence (IF), Immunocytochemistry (ICC)

## Product Details

Immunogen:	Synthetic peptide from the mid-protein of Human ATG4A (aa. 102-113)
Isotype:	IgG
Specificity:	Widely expressed, at a low level, and the highest expression is observed in skeletal muscle and brain. Also detected in fetal liver., Detects ~45 kDa.
Cross-Reactivity:	Human, Mouse, Rat
Purification:	Peptide Affinity Purified

## Target Details

Target:	ATG4A
Alternative Name:	ATG4A ( <a href="#">ATG4A Products</a> )

## Target Details

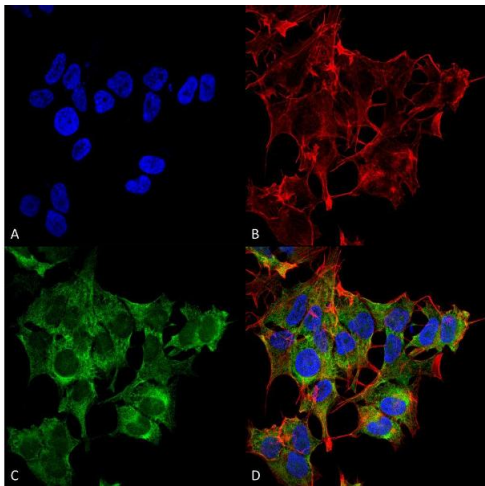
Background:	Autophagy related 4A, cysteine peptidase (ATG4A or APG4A) is a C-54 cysteine protease that also belongs to the family of autophagin proteins, and is primarily found in skeletal muscle and brain. ATG4A is involved in cellular autophagy and has been studied as a target for cancer therapy. Specifically it cleaves GATE-16. Mutations in the ATG4a gene is critical for redox regulation and inhibits autophagosome formation.
Gene ID:	115201
NCBI Accession:	<a href="#">NP_001308216</a>
UniProt:	<a href="#">Q8WYN0</a>
Pathways:	<a href="#">Autophagy</a>

## Application Details

Application Notes:	<ul style="list-style-type: none"><li>• WB (1:1000)</li><li>• ICC/IF (1:100)</li><li>• optimal dilutions for assays should be determined by the user.</li></ul>
Comment:	A 1:1000 dilution of ABIN5065986 was sufficient for detection of ATG4A in 15 µg of Human HeLa Cell Lysates by ECL immunoblot analysis using goat anti-rabbit IgG:HRP as the secondary antibody.
Restrictions:	For Research Use only

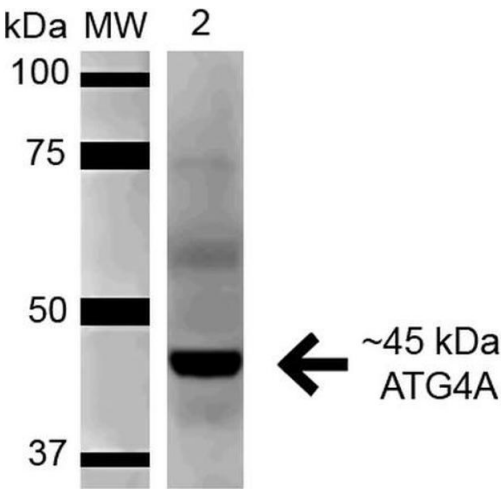
## Handling

Format:	Liquid
Concentration:	1 mg/mL
Buffer:	PBS, 50 % glycerol, 0.09 % sodium azide, Storage buffer may change when conjugated
Preservative:	Sodium azide
Precaution of Use:	This product contains Sodium azide: a POISONOUS AND HAZARDOUS SUBSTANCE which should be handled by trained staff only.
Storage:	4 °C
Storage Comment:	Conjugated antibodies should be stored at 4°C



**Immunofluorescence (fixed cells)**

**Image 1.** Immunocytochemistry/Immunofluorescence analysis using Rabbit Anti-ATG4A Polyclonal Antibody . Tissue: Neuroblastoma cell line (SK-N-BE). Species: Human. Fixation: 4% Formaldehyde for 15 min at RT. Primary Antibody: Rabbit Anti-ATG4A Polyclonal Antibody at 1:100 for 60 min at RT. Secondary Antibody: Goat Anti-Mouse ATTO 488 at 1:200 for 60 min at RT. Counterstain: Phalloidin Texas Red F-Actin stain; DAPI (blue) nuclear stain at 1:1000, 1:5000 for 60 min at RT, 5 min at RT. Localization: Cytoplasm. Magnification: 60X. (A) DAPI (blue) nuclear stain (B) Phalloidin Texas Red F-Actin stain (C) ATG4A Antibody (D) Composite.



**Western Blotting**

**Image 2.** Western blot analysis of Rat Pancreas cell lysates showing detection of 45.3 kDa ATG4A protein using Rabbit Anti-ATG4A Polyclonal Antibody . Lane 1: Molecular Weight Ladder (MW). Lane 2: Rat Pancreas cell lysates. Load: 15 µg . Block: 5% Skim Milk in 1X TBST. Primary Antibody: Rabbit Anti-ATG4A Polyclonal Antibody at 1:1000 for 1 hour at RT. Secondary Antibody: Goat Anti-Rabbit HRP at 1:2000 for 60 min at RT. Color Development: ECL solution for 6 min in RT. Predicted/Observed Size: 45.3 kDa. Other Band(s): ~55-60 kDa.