



[Go to Product page](#)

Datasheet for ABIN5066077

## anti-ATG4D antibody (AA 98-108) (FITC)

### 2 Images

#### Overview

Quantity:	100 µg
Target:	ATG4D
Binding Specificity:	AA 98-108
Reactivity:	Human
Host:	Rabbit
Clonality:	Polyclonal
Conjugate:	This ATG4D antibody is conjugated to FITC
Application:	Western Blotting (WB), Immunofluorescence (IF), Immunocytochemistry (ICC)

#### Product Details

Immunogen:	Synthetic peptide from the N-terminal of Human ATG4D (aa. 98-108)
Isotype:	IgG
Specificity:	Mainly expressed in skeletal muscle and, to a lower extent, in testis., Detects ~53 kDa.
Cross-Reactivity:	Human
Purification:	Peptide Affinity Purified

#### Target Details

Target:	ATG4D
Alternative Name:	ATG4D ( <a href="#">ATG4D Products</a> )
Background:	ATG4D, Autophagy related 4D, cysteine peptidases, belong to the autophagy-related protein 4

## Target Details

---

family of C54 endopeptidases. Members of this family play a role in the biogenesis of autophagosomes (1). Cysteine protease ATG4D: Cysteine protease required for the cytoplasm to vacuole transport (Cvt) and autophagy. Cleaves the C-terminal amino acid of ATG8 family proteins MAP1LC3 and GABARAPL2, to reveal a C-terminal glycine. Exposure of the glycine at the C-terminus is essential for ATG8 proteins conjugation to phosphatidylethanolamine (PE) and insertion to membranes, which is necessary for autophagy. Has also an activity of delipidating enzyme for the PE-conjugated forms (2).

Gene ID: 84971

NCBI Accession: [NP\\_001268433](#)

UniProt: [Q86TL0](#)

Pathways: [Autophagy](#)

## Application Details

---

Application Notes:

- WB (1:1000)
- ICC/IF (1:100)
- optimal dilutions for assays should be determined by the user.

Comment: A 1:1000 dilution of ABIN5066077 was sufficient for detection of ATG4D in 15 µg of Human HeLa Cell Lysates by ECL immunoblot analysis using goat anti-rabbit IgG:HRP as the secondary antibody.

Restrictions: For Research Use only

## Handling

---

Format: Liquid

Concentration: 1 mg/mL

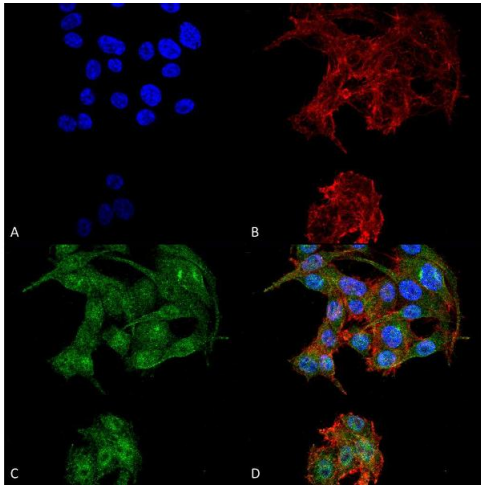
Buffer: PBS, 50 % glycerol, 0.09 % sodium azide, Storage buffer may change when conjugated

Preservative: Sodium azide

Precaution of Use: This product contains Sodium azide: a POISONOUS AND HAZARDOUS SUBSTANCE which should be handled by trained staff only.

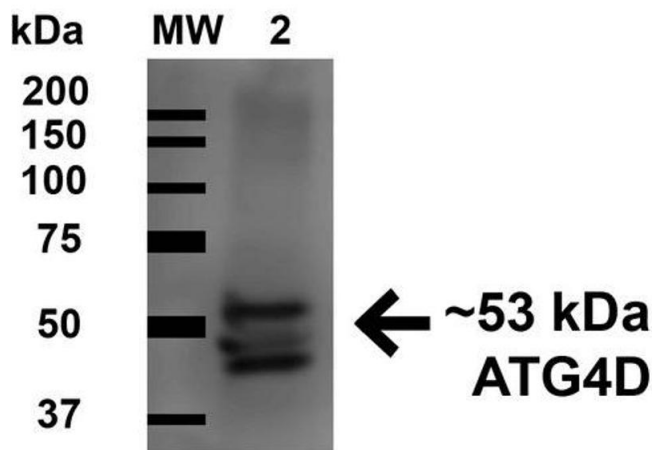
Storage: 4 °C

Storage Comment: Conjugated antibodies should be stored at 4°C



### Immunofluorescence (fixed cells)

**Image 1.** Immunocytochemistry/Immunofluorescence analysis using Rabbit Anti-ATG4D Polyclonal Antibody . Tissue: Colon carcinoma cell line (RKO). Species: Human. Fixation: 4% Formaldehyde for 15 min at RT. Primary Antibody: Rabbit Anti-ATG4D Polyclonal Antibody at 1:100 for 60 min at RT. Secondary Antibody: Goat Anti-Rabbit ATTO 488 at 1:100 for 60 min at RT. Counterstain: Phalloidin Texas Red F-Actin stain; DAPI (blue) nuclear stain at 1:1000, 1:5000 for 60 min at RT, 5 min at RT. Localization: Cytoplasm. Magnification: 60X. (A) DAPI nuclear stain. (B) Phalloidin Texas Red F-Actin stain. (C) ATG4D Antibody. (D) Composite.



### Western Blotting

**Image 2.** Western blot analysis of Human HeLa cell lysates showing detection of 52.9 kDa ATG4D protein using Rabbit Anti-ATG4D Polyclonal Antibody . Lane 1: Molecular Weight Ladder (MW). Lane 2: Human HeLa cell lysates. Load: 15 µg . Block: 5% Skim Milk in 1X TBST. Primary Antibody: Rabbit Anti-ATG4D Polyclonal Antibody at 1:1000 for 1 hour at RT. Secondary Antibody: Goat Anti-Rabbit HRP at 1:2000 for 60 min at RT. Color Development: ECL solution for 6 min in RT. Predicted/Observed Size: 52.9 kDa. Other Band(s): ~45 and 48 kDa.