

Datasheet for ABIN5066120
anti-FUNDC1 antibody (N-Term) (Atto 390)



[Go to Product page](#)

2 Images

Overview

Quantity:	100 µg
Target:	FUNDC1
Binding Specificity:	N-Term
Reactivity:	Human
Host:	Rabbit
Clonality:	Polyclonal
Conjugate:	This FUNDC1 antibody is conjugated to Atto 390
Application:	Western Blotting (WB), Immunohistochemistry (IHC)

Product Details

Immunogen:	Synthetic peptide from the N-terminal of Human FUNDC1
Isotype:	IgG
Specificity:	Widely expressed., Detects ~17 kDa.
Cross-Reactivity:	Human, Mouse, Rat
Purification:	Peptide Affinity Purified

Target Details

Target:	FUNDC1
Alternative Name:	FUNDC1 (FUNDC1 Products)
Gene ID:	139341

Target Details

NCBI Accession: [NP_776155](#)

UniProt: [Q8IVP5](#)

Application Details

Application Notes:

- WB (1:1000)
- IHC (1:50)
- optimal dilutions for assays should be determined by the user.

Comment: A 1:1000 dilution of ABIN5066120 was sufficient for detection of FUNDC1 in 15 µg of rat liver cell lysates by ECL immunoblot analysis using goat anti-rabbit IgG:HRP as the secondary antibody.

Restrictions: For Research Use only

Handling

Format: Liquid

Concentration: 1 mg/mL

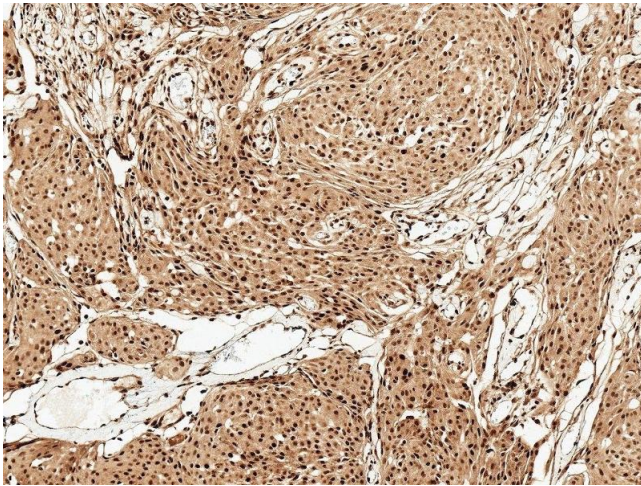
Buffer: PBS, 50 % glycerol, 0.09 % sodium azide, Storage buffer may change when conjugated

Preservative: Sodium azide

Precaution of Use: This product contains Sodium azide: a POISONOUS AND HAZARDOUS SUBSTANCE which should be handled by trained staff only.

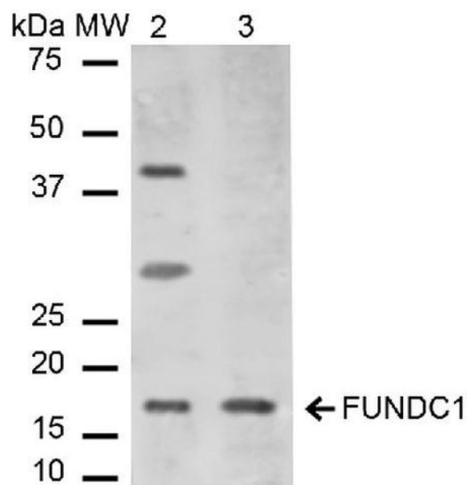
Storage: 4 °C

Storage Comment: Conjugated antibodies should be stored at 4°C



Immunohistochemistry

Image 1. Immunohistochemistry analysis using Rabbit Anti-FUNDC1 Polyclonal Antibody (ABIN5066120). Tissue: Brain. Species: Human. Fixation: Formalin Fixed Paraffin-Embedded. Primary Antibody: Rabbit Anti-FUNDC1 Polyclonal Antibody (ABIN5066120) at 1:50 for 30 min at RT. Counterstain: Hematoxylin. Magnification: 10X. HRP-DAB Detection.



Western Blotting

Image 2. Western blot analysis of Mouse, Rat Liver cell lysates showing detection of ~17.2 kDa FUNDC1 protein using Rabbit Anti-FUNDC1 Polyclonal Antibody . Lane 1: Molecular Weight Ladder (MW). Lane 2: Mouse Liver cell lysates. Lane 3: Rat Liver cell lysates. Load: 15 µg. Block: 5% Skim Milk in 1X TBST. Primary Antibody: Rabbit Anti-FUNDC1 Polyclonal Antibody at 1:1000 for 2 hours at RT. Secondary Antibody: Goat Anti-Rabbit IgG: HRP at 1:2000 for 60 min at RT. Color Development: ECL solution for 6 min in RT. Predicted/Observed Size: ~17.2 kDa.