

Datasheet for ABIN5066156  
**anti-ULK2 antibody (AA 558-569) (Atto 390)**[Go to Product page](#)

## 2 Images

## Overview

Quantity:	100 µg
Target:	ULK2
Binding Specificity:	AA 558-569
Reactivity:	Human
Host:	Rabbit
Clonality:	Polyclonal
Conjugate:	This ULK2 antibody is conjugated to Atto 390
Application:	Western Blotting (WB), Immunofluorescence (IF), Immunocytochemistry (ICC)

## Product Details

Immunogen:	Synthetic peptide from the mid-protein of Human ULK2 (aa. 558-569)
Isotype:	IgG
Specificity:	Detects ~100 kDa.
Cross-Reactivity:	Human, Rat
Purification:	Peptide Affinity Purified

## Target Details

Target:	ULK2
Alternative Name:	ULK2 ( <a href="#">ULK2 Products</a> )
Background:	UNC-51 like kinase 2 (ULK2) is widely expressed and contains an amino-terminal kinase domain

## Target Details

followed by a central proline-serine rich domain and a highly conserved carboxy-terminal domain. It has been linked to axon growth and is essential for autophagy. Structurally, ULK2 is similar to ATG1.

Gene ID: 9706

NCBI Accession: [NP\\_001136082](#)

UniProt: [Q8IYT8](#)

Pathways: [Regulation of Cell Size, Autophagy](#)

## Application Details

Application Notes:

- WB (1:1000)
- ICC/IF (1:100)
- optimal dilutions for assays should be determined by the user.

Comment: A 1:1000 dilution of ABIN5066156 was sufficient for detection of ULK2 in 15 µg of Human HeLa Cell Lysates by ECL immunoblot analysis using goat anti-rabbit IgG:HRP as the secondary antibody.

Restrictions: For Research Use only

## Handling

Format: Liquid

Concentration: 1 mg/mL

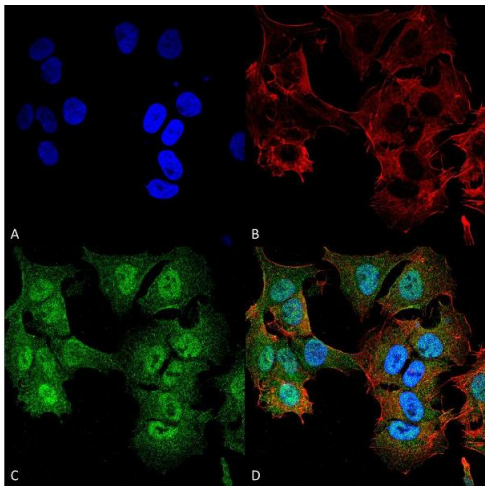
Buffer: PBS, 50 % glycerol, 0.09 % sodium azide, Storage buffer may change when conjugated

Preservative: Sodium azide

Precaution of Use: This product contains Sodium azide: a POISONOUS AND HAZARDOUS SUBSTANCE which should be handled by trained staff only.

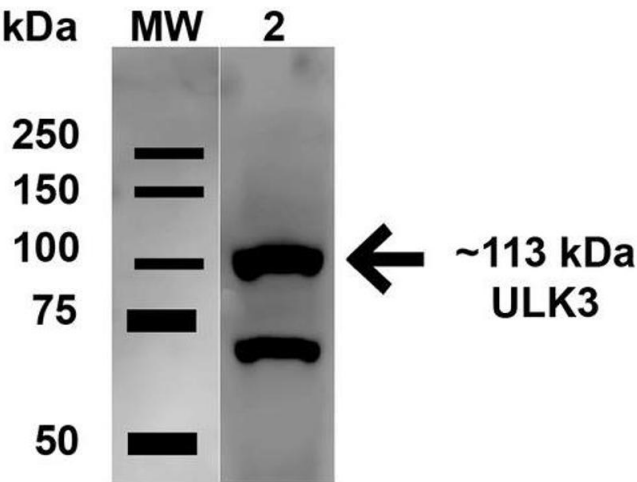
Storage: 4 °C

Storage Comment: Conjugated antibodies should be stored at 4°C



#### Immunofluorescence (fixed cells)

**Image 1.** Immunocytochemistry/Immunofluorescence analysis using Rabbit Anti-ULK2 Polyclonal Antibody . Tissue: Neuroblastoma cell line (SK-N-BE). Species: Human. Fixation: 4% Formaldehyde for 15 min at RT. Primary Antibody: Rabbit Anti-ULK2 Polyclonal Antibody at 1:100 for 60 min at RT. Secondary Antibody: Goat Anti-Mouse ATTO 488 at 1:200 for 60 min at RT. Counterstain: Phalloidin Texas Red F-Actin stain; DAPI (blue) nuclear stain at 1:1000, 1:5000 for 60 min at RT, 5 min at RT. Localization: Cytoplasmic Vesicle Membrane, Peripheral Membrane Protein. Magnification: 60X. (A) DAPI (blue) nuclear stain (B) Phalloidin Texas Red F-Actin stain (C) ULK2 Antibody (D) Composite.



#### Western Blotting

**Image 2.** Western blot analysis of Human HeLa cell lysates showing detection of 112.7 kDa ULK2 protein using Rabbit Anti-ULK2 Polyclonal Antibody . Lane 1: Molecular Weight Ladder (MW). Lane 2: Human HeLa cell lysates. Load: 15 µg . Block: 5% Skim Milk in 1X TBST. Primary Antibody: Rabbit Anti-ULK2 Polyclonal Antibody at 1:1000 for 1 hour at RT. Secondary Antibody: Goat Anti-Rabbit HRP at 1:2000 for 60 min at RT. Color Development: ECL solution for 6 min in RT. Predicted/Observed Size: 112.7 kDa. Other Band(s): ~70 kDa.