

Datasheet for ABIN5066231 anti-WIP12 antibody (C-Term) (Atto 594)

3 Images

[Go to Product page](#)

Overview

Quantity:	100 µg
Target:	WIP12
Binding Specificity:	C-Term
Reactivity:	Human
Host:	Rabbit
Clonality:	Polyclonal
Conjugate:	This WIP12 antibody is conjugated to Atto 594
Application:	Western Blotting (WB), Immunohistochemistry (IHC), Immunofluorescence (IF), Immunocytochemistry (ICC)

Product Details

Immunogen:	Synthetic peptide from the C-terminal of Human WIP12
Isotype:	IgG
Specificity:	Ubiquitously expressed (at protein level). Highly expressed in heart, skeletal muscle and pancreas. Expression is down-regulated in pancreatic and in kidney tumors., Detects ~55 kDa.
Cross-Reactivity:	Human
Purification:	Peptide Affinity Purified

Target Details

Target:	WIP12
---------	-------

Target Details

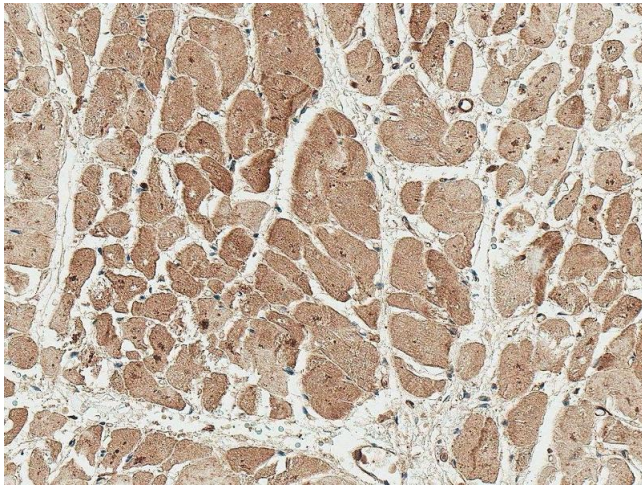
Alternative Name:	WIPI2 (WIPI2 Products)
Gene ID:	26100
NCBI Accession:	NP_001028690
UniProt:	Q9Y4P8

Application Details

Application Notes:	<ul style="list-style-type: none">• WB (1:1000)• ICC/IF (1:100)• IHC (1:50)• optimal dilutions for assays should be determined by the user.
Comment:	A 1:1000 dilution of ABIN5066231 was sufficient for detection of WIPI2 in 15 µg of human HeLa cell lysates by ECL immunoblot analysis using goat anti-rabbit IgG:HRP as the secondary antibody.
Restrictions:	For Research Use only

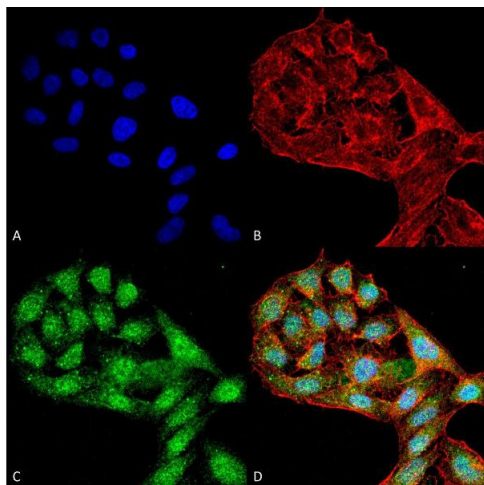
Handling

Format:	Liquid
Concentration:	1 mg/mL
Buffer:	PBS, 50 % glycerol, 0.09 % sodium azide, Storage buffer may change when conjugated
Preservative:	Sodium azide
Precaution of Use:	This product contains Sodium azide: a POISONOUS AND HAZARDOUS SUBSTANCE which should be handled by trained staff only.
Storage:	4 °C
Storage Comment:	Conjugated antibodies should be stored at 4°C



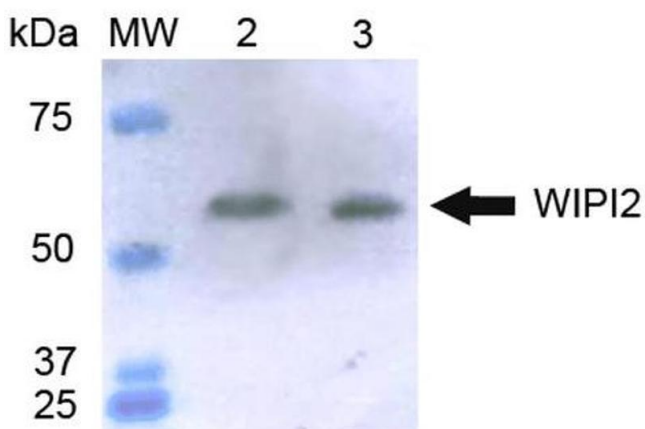
Immunohistochemistry

Image 1. Immunohistochemistry analysis using Rabbit Anti-WIPI2 Polyclonal Antibody (ABIN5066231). Tissue: Heart. Species: Human. Fixation: Formalin Fixed Paraffin-Embedded. Primary Antibody: Rabbit Anti-WIPI2 Polyclonal Antibody (ABIN5066231) at 1:50 for 30 min at RT. Counterstain: Hematoxylin. Magnification: 20X. HRP-DAB Detection.



Immunofluorescence (fixed cells)

Image 2. Immunocytochemistry/Immunofluorescence analysis using Rabbit Anti-WIPI2 Polyclonal Antibody. Tissue: HeLa Cells (Human Cervical Cancer). Species: Human. Fixation: 4% Formaldehyde for 15 min at RT. Primary Antibody: Rabbit Anti-WIPI2 Polyclonal Antibody at 1:100 for 60 min at RT. Secondary Antibody: Goat Anti-Rabbit ATTO 488 at 1:200 for 60 min at RT. Counterstain: Phalloidin Texas Red F-Actin stain; DAPI (blue) nuclear stain at 1:1000, 1:5000 for 60 min at RT, 5 min at RT. Localization: Cytoplasm. Magnification: 60X. (A) DAPI (blue) nuclear stain (B) Phalloidin Texas Red F-Actin stain (C) WIPI2 Antibody (D) Composite.



Western Blotting

Image 3. Western blot analysis of Human HeLa and 293T cell lysates showing detection of ~49.4 kDa WIPI2 protein using Rabbit Anti-WIPI2 Polyclonal Antibody. Lane 1: Molecular Weight Ladder (MW). Lane 2: HeLa cell lysates. Lane 3: 293T cell lysates. Load: 15 µg. Block: 5% Skim Milk in 1X TBST. Primary Antibody: Rabbit Anti-WIPI2 Polyclonal Antibody at 1:1000 for 2 hours at RT. Secondary Antibody: Goat Anti-Rabbit IgG: HRP at 1:1000 for 60 min at RT. Color Development: ECL solution for 6 min in RT. Predicted/Observed Size: ~49.4 kDa.