

Datasheet for ABIN5066261  
**anti-WDR45 antibody (AA 312-322) (PE)**[Go to Product page](#)

## 2 Images

## Overview

Quantity:	100 µg
Target:	WDR45
Binding Specificity:	AA 312-322
Reactivity:	Human
Host:	Rabbit
Clonality:	Polyclonal
Conjugate:	This WDR45 antibody is conjugated to PE
Application:	Western Blotting (WB), Immunofluorescence (IF), Immunocytochemistry (ICC)

## Product Details

Immunogen:	Synthetic peptide from the C-terminal of Human WIP14 (aa. 312-322)
Isotype:	IgG
Specificity:	Ubiquitously expressed, with high expression in skeletal muscle and heart. Weakly expressed in liver and placenta. Expression is down-regulated in pancreatic and in kidney tumors., Detects ~40 kDa.
Cross-Reactivity:	Human, Rat
Purification:	Peptide Affinity Purified

## Target Details

Target:	WDR45
---------	-------

## Target Details

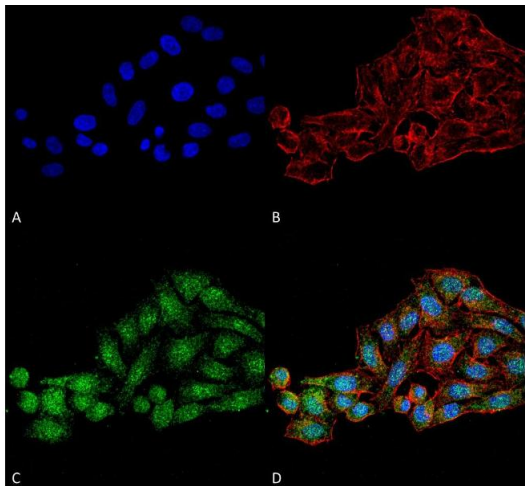
Alternative Name:	WDR45 ( <a href="#">WDR45 Products</a> )
Background:	WIPI-4 is a 360 amino acid protein containing three WD repeats. Existing as three alternatively spliced isoforms, WIPI-4 is ubiquitously expressed but found at highest levels in heart and skeletal muscle. WD repeat proteins are involved in a variety of cellular processes, including cell cycle progression, signal transduction, apoptosis, and gene regulation. Diseases associated with this gene include neurodegeneration with brain iron acculation 5 and 4.
Gene ID:	11152
NCBI Accession:	<a href="#">NP_001025067</a>
UniProt:	<a href="#">Q9Y484</a>

## Application Details

Application Notes:	<ul style="list-style-type: none"><li>• WB (1:1000)</li><li>• ICC/IF (1:100)</li><li>• optimal dilutions for assays should be determined by the user.</li></ul>
Comment:	A 1:1000 dilution of ABIN5066261 was sufficient for detection of WIPI4 in 15 µg of Human HeLa Cell Lysates by ECL immunoblot analysis using goat anti-rabbit IgG:HRP as the secondary antibody.
Restrictions:	For Research Use only

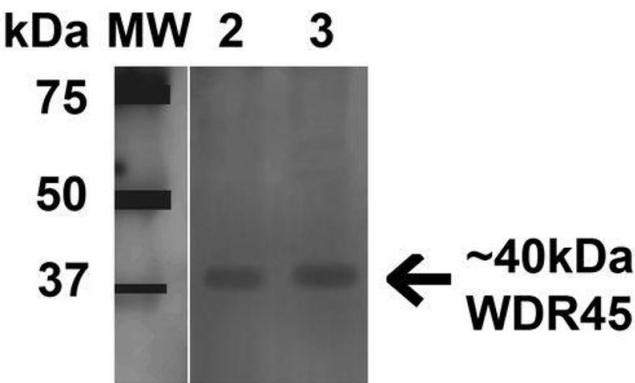
## Handling

Format:	Liquid
Concentration:	1 mg/mL
Buffer:	PBS, 50 % glycerol, 0.09 % sodium azide, Storage buffer may change when conjugated
Preservative:	Sodium azide
Precaution of Use:	This product contains Sodium azide: a POISONOUS AND HAZARDOUS SUBSTANCE which should be handled by trained staff only.
Storage:	4 °C
Storage Comment:	Conjugated antibodies should be stored at 4°C



#### Immunofluorescence (fixed cells)

**Image 1.** Immunocytochemistry/Immunofluorescence analysis using Rabbit Anti-WDR45 Polyclonal Antibody . Tissue: HeLa Cells (Human Cervical Cancer). Species: Human. Fixation: 4% Formaldehyde for 15 min at RT. Primary Antibody: Rabbit Anti-WDR45 Polyclonal Antibody at 1:100 for 60 min at RT. Secondary Antibody: Goat Anti-Rabbit ATTO 488 at 1:200 for 60 min at RT. Counterstain: Phalloidin Texas Red F-Actin stain; DAPI (blue) nuclear stain at 1:1000, 1:5000 for 60 min at RT, 5 min at RT. Localization: Cytoplasm . Magnification: 60X. (A) DAPI (blue) nuclear stain (B) Phalloidin Texas Red F-Actin stain (C) WDR45 Antibody (D) Composite.



#### Western Blotting

**Image 2.** Western blot analysis of Human 293Trap cell lysates showing detection of 40 kDa WDR45 protein using Rabbit Anti-WDR45 Polyclonal Antibody . Lane 1: Molecular Weight Ladder (MW). Lane 2: Human 293Trap cell lysates. Load: 15 µg . Block: 5% Skim Milk in 1X TBST. Primary Antibody: Rabbit Anti-WDR45 Polyclonal Antibody at 1:1000 for 1 hour at RT. Secondary Antibody: Goat Anti-Rabbit HRP at 1:2000 for 60 min at RT. Color Development: ECL solution for 6 min in RT. Predicted/Observed Size: 40 kDa.