



[Go to Product page](#)

Datasheet for ABIN5066301

## anti-PIK3R4 antibody (AA 1314-1325) (Atto 488)

### 2 Images

#### Overview

|                      |   |
|----------------------|---|
| Quantity:            | 100 µg  |
| Target:              | PIK3R4  |
| Binding Specificity: | AA 1314-1325  |
| Reactivity:          | Human   |
| Host:                | Rabbit  |
| Clonality:           | Polyclonal  |
| Conjugate:           | This PIK3R4 antibody is conjugated to Atto 488                            |
| Application:         | Western Blotting (WB), Immunofluorescence (IF), Immunocytochemistry (ICC) |

#### Product Details

|                   |   |
|-------------------|---|
| Immunogen:        | Synthetic peptide from the C-terminal of Human PIK3R4 (aa. 1314-1325) |
| Isotype:          | IgG   |
| Specificity:      | Ubiquitously expressed., Detects ~160 kDa.                            |
| Cross-Reactivity: | Human, Rat  |
| Purification:     | Peptide Affinity Purified   |

#### Target Details

|                   |  |
|-------------------|--|
| Target:           | PIK3R4                                     |
| Alternative Name: | PIK3R4 ( <a href="#">PIK3R4 Products</a> ) |
| Gene ID:          | 30849                                      |

## Target Details

---

NCBI Accession: [NP\\_055417](#)

UniProt: [Q99570](#)

## Application Details

---

Application Notes:

- WB (1:1000)
- ICC/IF (1:100)
- optimal dilutions for assays should be determined by the user.

Comment: A 1:1000 dilution of ABIN5066301 was sufficient for detection of PIK3R4 in 15 µg of Rat Brain Lysates by ECL immunoblot analysis using goat anti-rabbit IgG:HRP as the secondary antibody.

Restrictions: For Research Use only

## Handling

---

Format: Liquid

Concentration: 1 mg/mL

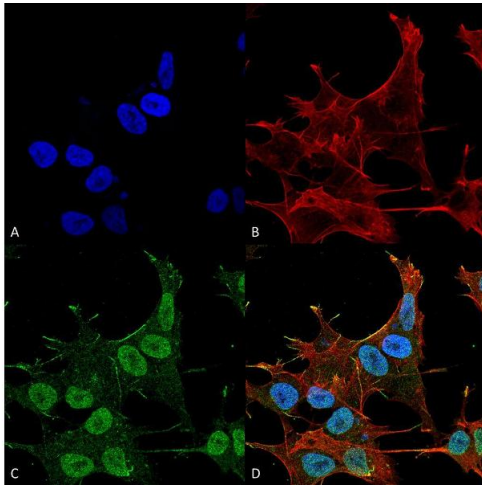
Buffer: PBS, 50 % glycerol, 0.09 % sodium azide, Storage buffer may change when conjugated

Preservative: Sodium azide

Precaution of Use: This product contains Sodium azide: a POISONOUS AND HAZARDOUS SUBSTANCE which should be handled by trained staff only.

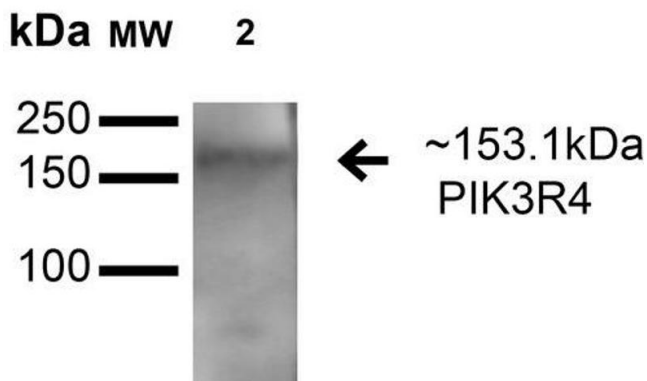
Storage: 4 °C

Storage Comment: Conjugated antibodies should be stored at 4°C



### Immunofluorescence (fixed cells)

**Image 1.** Immunocytochemistry/Immunofluorescence analysis using Rabbit Anti-PIK3R4 Polyclonal Antibody . Tissue: Neuroblastoma cell line (SK-N-BE). Species: Human. Fixation: 4% Formaldehyde for 15 min at RT. Primary Antibody: Rabbit Anti-PIK3R4 Polyclonal Antibody at 1:100 for 60 min at RT. Secondary Antibody: Goat Anti-Mouse ATTO 488 at 1:200 for 60 min at RT. Counterstain: Phalloidin Texas Red F-Actin stain; DAPI (blue) nuclear stain at 1:1000, 1:5000 for 60 min at RT, 5 min at RT. Localization: Endosome, Cytoplasmic Vesicle, Autophagosome, Membrane, Lipid-Anchor. Magnification: 60X. (A) DAPI (blue) nuclear stain (B) Phalloidin Texas Red F-Actin stain (C) PIK3R4 Antibody (D) Composite.



### Western Blotting

**Image 2.** Western blot analysis of Rat Brain cell lysates showing detection of 153.1 kDa PIK3R4 protein using Rabbit Anti-PIK3R4 Polyclonal Antibody . Lane 1: Molecular Weight Ladder (MW). Lane 2: Rat Brain cell lysates. Load: 15 µg . Block: 5% Skim Milk in 1X TBST. Primary Antibody: Rabbit Anti-PIK3R4 Polyclonal Antibody at 1:1000 for 1 hour at RT. Secondary Antibody: Goat Anti-Rabbit HRP at 1:2000 for 60 min at RT. Color Development: ECL solution for 6 min in RT. Predicted/Observed Size: 153.1 kDa.