



[Go to Product page](#)

Datasheet for ABIN5066303

anti-PIK3R4 antibody (AA 1314-1325) (Atto 594)

2 Images

Overview

Quantity:	100 µg
Target:	PIK3R4
Binding Specificity:	AA 1314-1325
Reactivity:	Human
Host:	Rabbit
Clonality:	Polyclonal
Conjugate:	This PIK3R4 antibody is conjugated to Atto 594
Application:	Western Blotting (WB), Immunofluorescence (IF), Immunocytochemistry (ICC)

Product Details

Immunogen:	Synthetic peptide from the C-terminal of Human PIK3R4 (aa. 1314-1325)
Isotype:	IgG
Specificity:	Ubiquitously expressed., Detects ~160 kDa.
Cross-Reactivity:	Human, Rat
Purification:	Peptide Affinity Purified

Target Details

Target:	PIK3R4
Alternative Name:	PIK3R4 (PIK3R4 Products)
Gene ID:	30849

Target Details

NCBI Accession: [NP_055417](#)

UniProt: [Q99570](#)

Application Details

Application Notes:

- WB (1:1000)
- ICC/IF (1:100)
- optimal dilutions for assays should be determined by the user.

Comment: A 1:1000 dilution of ABIN5066303 was sufficient for detection of PIK3R4 in 15 µg of Rat Brain Lysates by ECL immunoblot analysis using goat anti-rabbit IgG:HRP as the secondary antibody.

Restrictions: For Research Use only

Handling

Format: Liquid

Concentration: 1 mg/mL

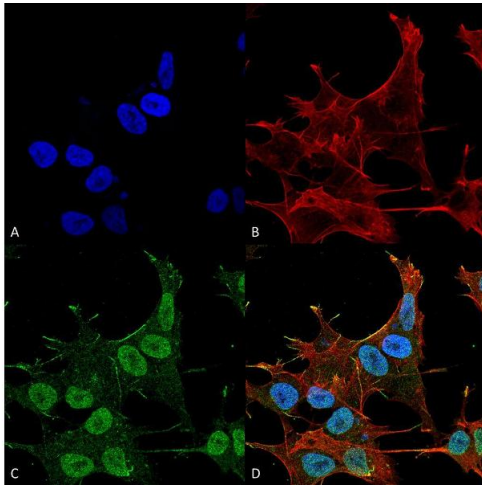
Buffer: PBS, 50 % glycerol, 0.09 % sodium azide, Storage buffer may change when conjugated

Preservative: Sodium azide

Precaution of Use: This product contains Sodium azide: a POISONOUS AND HAZARDOUS SUBSTANCE which should be handled by trained staff only.

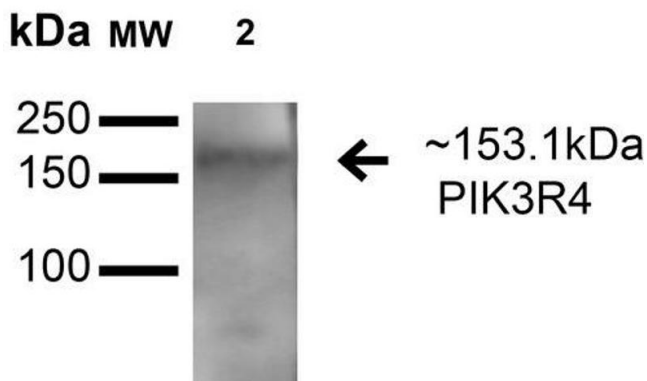
Storage: 4 °C

Storage Comment: Conjugated antibodies should be stored at 4°C



Immunofluorescence (fixed cells)

Image 1. Immunocytochemistry/Immunofluorescence analysis using Rabbit Anti-PIK3R4 Polyclonal Antibody . Tissue: Neuroblastoma cell line (SK-N-BE). Species: Human. Fixation: 4% Formaldehyde for 15 min at RT. Primary Antibody: Rabbit Anti-PIK3R4 Polyclonal Antibody at 1:100 for 60 min at RT. Secondary Antibody: Goat Anti-Mouse ATTO 488 at 1:200 for 60 min at RT. Counterstain: Phalloidin Texas Red F-Actin stain; DAPI (blue) nuclear stain at 1:1000, 1:5000 for 60 min at RT, 5 min at RT. Localization: Endosome, Cytoplasmic Vesicle, Autophagosome, Membrane, Lipid-Anchor. Magnification: 60X. (A) DAPI (blue) nuclear stain (B) Phalloidin Texas Red F-Actin stain (C) PIK3R4 Antibody (D) Composite.



Western Blotting

Image 2. Western blot analysis of Rat Brain cell lysates showing detection of 153.1 kDa PIK3R4 protein using Rabbit Anti-PIK3R4 Polyclonal Antibody . Lane 1: Molecular Weight Ladder (MW). Lane 2: Rat Brain cell lysates. Load: 15 µg . Block: 5% Skim Milk in 1X TBST. Primary Antibody: Rabbit Anti-PIK3R4 Polyclonal Antibody at 1:1000 for 1 hour at RT. Secondary Antibody: Goat Anti-Rabbit HRP at 1:2000 for 60 min at RT. Color Development: ECL solution for 6 min in RT. Predicted/Observed Size: 153.1 kDa.