

Datasheet for ABIN5066426
anti-IFT88 antibody (AA 674-686) (Atto 390)[Go to Product page](#)

2 Images

Overview

| | |
|----------------------|---|
| Quantity: | 100 µg |
| Target: | IFT88 |
| Binding Specificity: | AA 674-686 |
| Reactivity: | Human |
| Host: | Rabbit |
| Clonality: | Polyclonal |
| Conjugate: | This IFT88 antibody is conjugated to Atto 390 |
| Application: | Western Blotting (WB), Immunofluorescence (IF), Immunocytochemistry (ICC) |

Product Details

| | |
|-------------------|---|
| Immunogen: | Synthetic peptide from the mid to C-terminal of Human IFT88 (aa. 674-686) |
| Isotype: | IgG |
| Specificity: | Expressed in the heart, brain, liver, lung, kidney, skeletal muscle and pancreas., Detects ~94 kDa. |
| Cross-Reactivity: | Human, Mouse |
| Purification: | Peptide Affinity Purified |

Target Details

| | |
|-------------------|--|
| Target: | IFT88 |
| Alternative Name: | IFT88 (IFT88 Products) |
| Gene ID: | 8100 |

Target Details

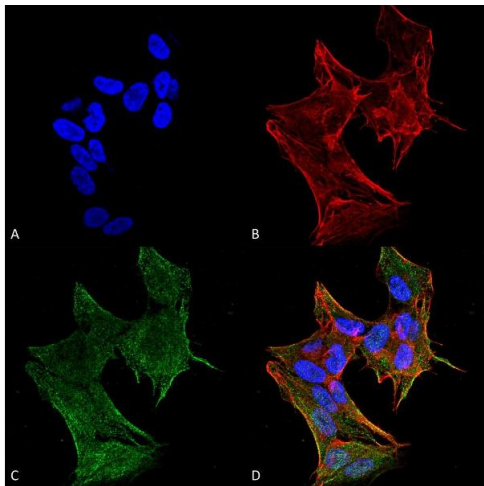
| | |
|-----------------|--|
| NCBI Accession: | NP_001305420 |
| UniProt: | Q13099 |
| Pathways: | Hedgehog Signaling , Sensory Perception of Sound |

Application Details

| | |
|--------------------|---|
| Application Notes: | <ul style="list-style-type: none">• WB (1:1000)• ICC/IF (1:100)• optimal dilutions for assays should be determined by the user. |
| Comment: | A 1:1000 dilution of ABIN5066426 was sufficient for detection of IFT88 in 15 µg of Human HeLa Cell Lysates by ECL immunoblot analysis using goat anti-rabbit IgG:HRP as the secondary antibody. |
| Restrictions: | For Research Use only |

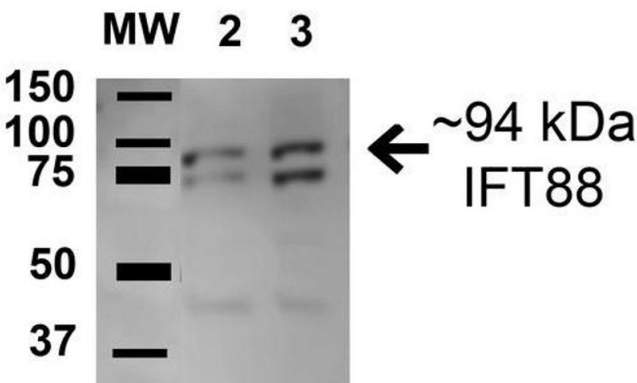
Handling

| | |
|--------------------|--|
| Format: | Liquid |
| Concentration: | 1 mg/mL |
| Buffer: | PBS, 50 % glycerol, 0.09 % sodium azide, Storage buffer may change when conjugated |
| Preservative: | Sodium azide |
| Precaution of Use: | This product contains Sodium azide: a POISONOUS AND HAZARDOUS SUBSTANCE which should be handled by trained staff only. |
| Storage: | 4 °C |
| Storage Comment: | Conjugated antibodies should be stored at 4°C |



Immunofluorescence (fixed cells)

Image 1. Immunocytochemistry/Immunofluorescence analysis using Rabbit Anti-IFT88 Polyclonal Antibody . Tissue: Neuroblastoma cell line (SK-N-BE). Species: Human. Fixation: 4% Formaldehyde for 15 min at RT. Primary Antibody: Rabbit Anti-IFT88 Polyclonal Antibody at 1:100 for 60 min at RT. Secondary Antibody: Goat Anti-Rabbit ATTO 488 at 1:100 for 60 min at RT. Counterstain: Phalloidin Texas Red F-Actin stain; DAPI (blue) nuclear stain at 1:1000, 1:5000 for 60 min at RT, 5 min at RT. Localization: Cytoplasm, Cytoskeleton. Magnification: 60X. (A) DAPI nuclear stain. (B) Phalloidin Texas Red F-Actin stain. (C) IFT88 Antibody. (D) Composite.



Western Blotting

Image 2. Western blot analysis of Human A549 cell lysates showing detection of 94.3 kDa IFT88 protein using Rabbit Anti-IFT88 Polyclonal Antibody . Lane 1: Molecular Weight Ladder (MW). Lane 2: Human A549 cell lysates. Load: 15 µg . Block: 5% Skim Milk in 1X TBST. Primary Antibody: Rabbit Anti-IFT88 Polyclonal Antibody at 1:1000 for 1 hour at RT. Secondary Antibody: Goat Anti-Rabbit HRP at 1:2000 for 60 min at RT. Color Development: ECL solution for 6 min in RT. Predicted/Observed Size: 94.3 kDa. Other Band(s): 45 kDa.