

Datasheet for ABIN5066434

anti-IFT88 antibody (AA 674-686) (Alkaline Phosphatase (AP))[Go to Product page](#)**2** Images

Overview

Quantity:	100 µg
Target:	IFT88
Binding Specificity:	AA 674-686
Reactivity:	Human
Host:	Rabbit
Clonality:	Polyclonal
Conjugate:	This IFT88 antibody is conjugated to Alkaline Phosphatase (AP)
Application:	Western Blotting (WB), Immunofluorescence (IF), Immunocytochemistry (ICC)

Product Details

Immunogen:	Synthetic peptide from the mid to C-terminal of Human IFT88 (aa. 674-686)
Isotype:	IgG
Specificity:	Expressed in the heart, brain, liver, lung, kidney, skeletal muscle and pancreas., Detects ~94 kDa.
Cross-Reactivity:	Human, Mouse
Purification:	Peptide Affinity Purified

Target Details

Target:	IFT88
Alternative Name:	IFT88 (IFT88 Products)
Gene ID:	8100

Target Details

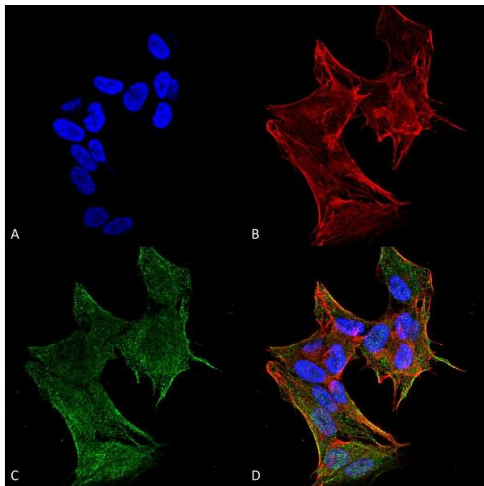
NCBI Accession:	NP_001305420
UniProt:	Q13099
Pathways:	Hedgehog Signaling , Sensory Perception of Sound

Application Details

Application Notes:	<ul style="list-style-type: none">• WB (1:1000)• ICC/IF (1:100)• optimal dilutions for assays should be determined by the user.
Comment:	A 1:1000 dilution of ABIN5066434 was sufficient for detection of IFT88 in 15 µg of Human HeLa Cell Lysates by ECL immunoblot analysis using goat anti-rabbit IgG:HRP as the secondary antibody.
Restrictions:	For Research Use only

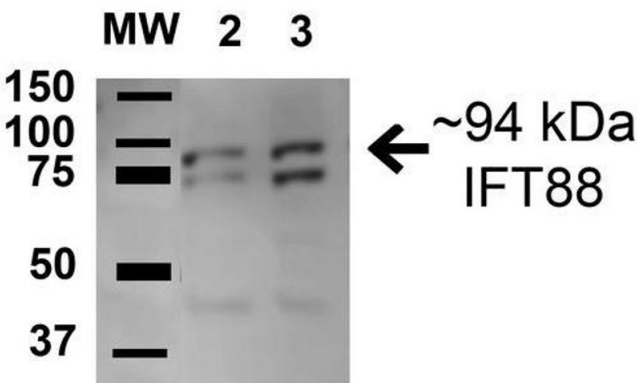
Handling

Format:	Liquid
Concentration:	1 mg/mL
Buffer:	PBS, 50 % glycerol, 0.09 % sodium azide, Storage buffer may change when conjugated
Preservative:	Sodium azide
Precaution of Use:	This product contains Sodium azide: a POISONOUS AND HAZARDOUS SUBSTANCE which should be handled by trained staff only.
Storage:	4 °C
Storage Comment:	Conjugated antibodies should be stored at 4°C



Immunofluorescence (fixed cells)

Image 1. Immunocytochemistry/Immunofluorescence analysis using Rabbit Anti-IFT88 Polyclonal Antibody . Tissue: Neuroblastoma cell line (SK-N-BE). Species: Human. Fixation: 4% Formaldehyde for 15 min at RT. Primary Antibody: Rabbit Anti-IFT88 Polyclonal Antibody at 1:100 for 60 min at RT. Secondary Antibody: Goat Anti-Rabbit ATTO 488 at 1:100 for 60 min at RT. Counterstain: Phalloidin Texas Red F-Actin stain; DAPI (blue) nuclear stain at 1:1000, 1:5000 for 60 min at RT, 5 min at RT. Localization: Cytoplasm, Cytoskeleton. Magnification: 60X. (A) DAPI nuclear stain. (B) Phalloidin Texas Red F-Actin stain. (C) IFT88 Antibody. (D) Composite.



Western Blotting

Image 2. Western blot analysis of Human A549 cell lysates showing detection of 94.3 kDa IFT88 protein using Rabbit Anti-IFT88 Polyclonal Antibody . Lane 1: Molecular Weight Ladder (MW). Lane 2: Human A549 cell lysates. Load: 15 µg . Block: 5% Skim Milk in 1X TBST. Primary Antibody: Rabbit Anti-IFT88 Polyclonal Antibody at 1:1000 for 1 hour at RT. Secondary Antibody: Goat Anti-Rabbit HRP at 1:2000 for 60 min at RT. Color Development: ECL solution for 6 min in RT. Predicted/Observed Size: 94.3 kDa. Other Band(s): 45 kDa.