

Datasheet for ABIN5066443  
**anti-VMP1 antibody (AA 391-402)**



[Go to Product page](#)

2 Images

### Overview

Quantity:	100 µg
Target:	VMP1
Binding Specificity:	AA 391-402
Reactivity:	Human
Host:	Rabbit
Clonality:	Polyclonal
Conjugate:	This VMP1 antibody is un-conjugated
Application:	Western Blotting (WB), Immunofluorescence (IF), Immunocytochemistry (ICC)

### Product Details

Immunogen:	Synthetic peptide from the C-terminal of Human VMP1 (aa. 391-402)
Isotype:	IgG
Specificity:	Detects ~46 kDa.
Cross-Reactivity:	Human
Purification:	Peptide Affinity Purified

### Target Details

Target:	VMP1
Alternative Name:	VMP1 ( <a href="#">VMP1 Products</a> )
Gene ID:	81671

## Target Details

---

NCBI Accession: [NP\\_112200](#)

UniProt: [Q96GC9](#)

## Application Details

---

Application Notes:

- WB (1:1000)
- ICC/IF (1:100)
- optimal dilutions for assays should be determined by the user.

Comment: A 1:1000 dilution of ABIN5066443 was sufficient for detection of VMP1 in 15 µg of Human 293T Cell Lysates by ECL immunoblot analysis using goat anti-rabbit IgG:HRP as the secondary antibody.

Restrictions: For Research Use only

## Handling

---

Format: Liquid

Concentration: 1 mg/mL

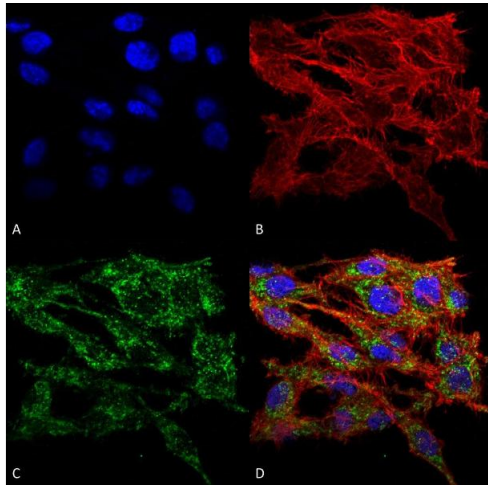
Buffer: PBS, 50 % glycerol, 0.09 % sodium azide, Storage buffer may change when conjugated

Preservative: Sodium azide

Precaution of Use: This product contains Sodium azide: a POISONOUS AND HAZARDOUS SUBSTANCE which should be handled by trained staff only.

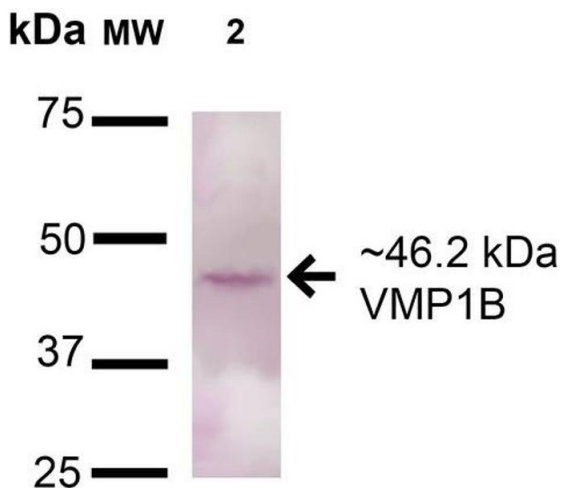
Storage: -20 °C

Storage Comment: -20°C



### Immunofluorescence (fixed cells)

**Image 1.** Immunocytochemistry/Immunofluorescence analysis using Rabbit Anti-VMP1 Polyclonal Antibody . Tissue: Colon carcinoma cell line (RKO). Species: Human. Fixation: 4% Formaldehyde for 15 min at RT. Primary Antibody: Rabbit Anti-VMP1 Polyclonal Antibody at 1:100 for 60 min at RT. Secondary Antibody: Goat Anti-Rabbit ATTO 488 at 1:100 for 60 min at RT. Counterstain: Phalloidin Texas Red F-Actin stain; DAPI (blue) nuclear stain at 1:1000, 1:5000 for 60 min at RT, 5 min at RT. Localization: Endoplasmic Reticulum-Golgi Intermediate Compartment Membrane, Vacuole Membrane. Magnification: 60X. (A) DAPI nuclear stain. (B) Phalloidin Texas Red F-Actin stain. (C) VMP1 Antibody. (D) Composite.



### Western Blotting

**Image 2.** Western blot analysis of Rat Pancreas cell lysates showing detection of 46.2kDa VMP1 protein using Rabbit Anti-VMP1 Polyclonal Antibody . Lane 1: Molecular Weight Ladder (MW). Lane 2: Rat Pancreas cell lysates. Load: 15  $\mu$ g . Block: 5% Skim Milk in 1X TBST. Primary Antibody: Rabbit Anti-VMP1 Polyclonal Antibody at 1:1000 for 16 hours at 4°C. Secondary Antibody: Goat-Anti-Rabbit IgG: HRP at 1:200 for 60 min at RT. Color Development: TMB. Predicted/Observed Size: 46.2kDa. Other Band(s): Multiple bands for A549; Rat Brain shows a band at 60kDa, 75kDa, and 150kDa.