



[Go to Product page](#)

Datasheet for ABIN5066516  
**anti-BRSK1 antibody (Atto 390)**

2 Images

Overview

Quantity:	100 µg
Target:	BRSK1
Reactivity:	Human
Host:	Rabbit
Clonality:	Polyclonal
Conjugate:	This BRSK1 antibody is conjugated to Atto 390
Application:	Western Blotting (WB), Immunohistochemistry (IHC), Immunofluorescence (IF), Immunocytochemistry (ICC)

Product Details

Immunogen:	Synthetic peptide from the mid-protein of Human BRSK1
Isotype:	IgG
Specificity:	Widely expressed, with highest levels in brain and testis. Protein levels remain constant throughout the cell cycle., Detects ~70 kDa.
Cross-Reactivity:	Human, Mouse
Purification:	Peptide Affinity Purified

Target Details

Target:	BRSK1
Alternative Name:	BRSK1 ( <a href="#">BRSK1 Products</a> )

## Target Details

---

Gene ID: 84446

NCBI Accession: [NP\\_115806](#)

UniProt: [Q8TDC3](#)

## Application Details

---

Application Notes:

- WB (1:1000)
- ICC/IF (1:100)
- IHC ((1:50)
- optimal dilutions for assays should be determined by the user.

Comment: A 1:1000 dilution of ABIN5066516 was sufficient for detection of BRSK1 in 15 µg of mouse brain cell lysates by ECL immunoblot analysis using goat anti-rabbit IgG:HRP as the secondary antibody.

Restrictions: For Research Use only

## Handling

---

Format: Liquid

Concentration: 1 mg/mL

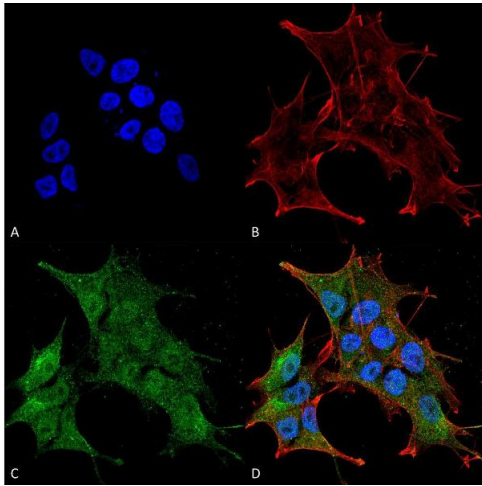
Buffer: PBS, 50 % glycerol, 0.09 % sodium azide, Storage buffer may change when conjugated

Preservative: Sodium azide

Precaution of Use: This product contains Sodium azide: a POISONOUS AND HAZARDOUS SUBSTANCE which should be handled by trained staff only.

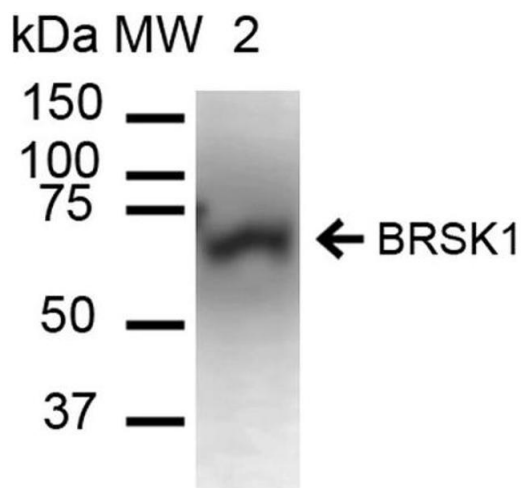
Storage: 4 °C

Storage Comment: Conjugated antibodies should be stored at 4°C



### Immunofluorescence (fixed cells)

**Image 1.** Immunocytochemistry/Immunofluorescence analysis using Rabbit Anti-BRSK1 Polyclonal Antibody . Tissue: Neuroblastoma cell line (SK-N-BE). Species: Human. Fixation: 4% Formaldehyde for 15 min at RT. Primary Antibody: Rabbit Anti-BRSK1 Polyclonal Antibody at 1:100 for 60 min at RT. Secondary Antibody: Goat Anti-Mouse ATTO 488 at 1:200 for 60 min at RT. Counterstain: Phalloidin Texas Red F-Actin stain; DAPI (blue) nuclear stain at 1:1000, 1:5000 for 60 min at RT, 5 min at RT. Localization: Cytoplasm, Nucleus. Magnification: 60X. (A) DAPI (blue) nuclear stain (B) Phalloidin Texas Red F-Actin stain (C) BRSK1 Antibody (D) Composite.



### Western Blotting

**Image 2.** Western blot analysis of Mouse Brain cell lysates showing detection of ~85.1 kDa BRSK1 protein using Rabbit Anti-BRSK1 Polyclonal Antibody . Lane 1: Molecular Weight Ladder (MW). Lane 2: Mouse Brain cell lysates. Load: 15 µg. Block: 5% Skim Milk in 1X TBST. Primary Antibody: Rabbit Anti-BRSK1 Polyclonal Antibody at 1:1000 for 60 min at RT. Secondary Antibody: Goat Anti-Rabbit IgG: HRP at 1:2000 for 60 min at RT. Color Development: ECL solution for 6 min in RT. Predicted/Observed Size: ~85.1 kDa.