



[Go to Product page](#)

Datasheet for ABIN5066670  
**anti-KCNJ10 antibody (Biotin)**

3 Images

### Overview

Quantity:	100 µg
Target:	KCNJ10
Reactivity:	Human
Host:	Rabbit
Clonality:	Polyclonal
Conjugate:	This KCNJ10 antibody is conjugated to Biotin
Application:	Western Blotting (WB), Immunohistochemistry (IHC), Immunocytochemistry (ICC), Immunofluorescence (IF)

### Product Details

Immunogen:	Synthetic peptide from the mid-protein of Human Kir4.1
Isotype:	IgG
Specificity:	Expressed in kidney (at protein level),.Detects ~42 kDa.
Cross-Reactivity:	Human, Rat
Purification:	Peptide Affinity Purified

### Target Details

Target:	KCNJ10
Alternative Name:	Kir4.1 ( <a href="#">KCNJ10 Products</a> )
Gene ID:	3766

## Target Details

---

NCBI Accession: [NP\\_002232](#)

UniProt: [P78508](#)

Pathways: [Dicarboxylic Acid Transport, Regulation of long-term Neuronal Synaptic Plasticity](#)

## Application Details

---

Application Notes:

- WB (1:1000)
- ICC/IF (1:100)
- IHC (1:50)
- optimal dilutions for assays should be determined by the user.

Comment: A 1:1000 dilution of ABIN5066670 was sufficient for detection of Kir4.1 in 15 µg of rat liver cell lysates by ECL immunoblot analysis using goat anti-rabbit IgG:HRP as the secondary antibody.

Restrictions: For Research Use only

## Handling

---

Format: Liquid

Concentration: 1 mg/mL

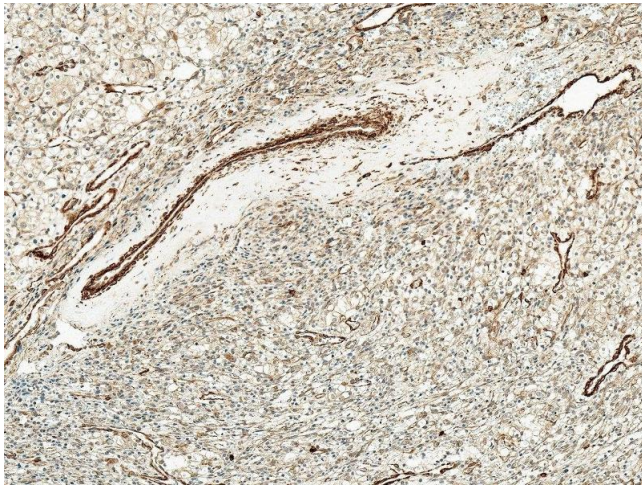
Buffer: PBS, 50 % glycerol, 0.09 % sodium azide, Storage buffer may change when conjugated

Preservative: Sodium azide

Precaution of Use: This product contains Sodium azide: a POISONOUS AND HAZARDOUS SUBSTANCE which should be handled by trained staff only.

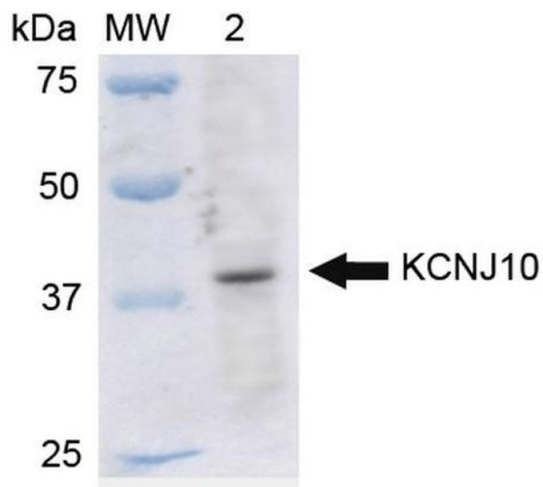
Storage: 4 °C

Storage Comment: Conjugated antibodies should be stored at 4°C



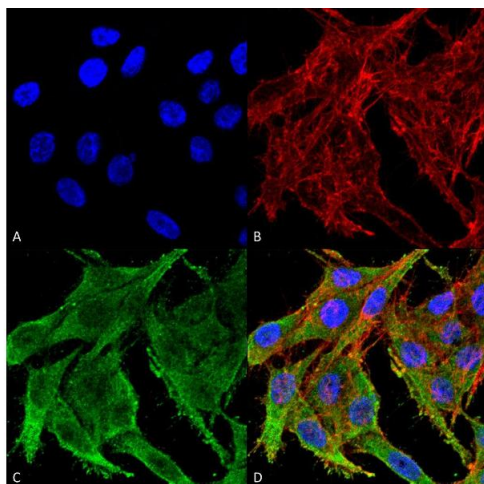
### Immunohistochemistry

**Image 1.** Immunohistochemistry analysis using Rabbit Anti-Kir4.1 Polyclonal Antibody (ABIN5066670). Tissue: Kidney. Species: Human. Fixation: Formalin Fixed Paraffin-Embedded. Primary Antibody: Rabbit Anti-Kir4.1 Polyclonal Antibody (ABIN5066670) at 1:50 for 30 min at RT. Counterstain: Hematoxylin. Magnification: 10X. HRP-DAB Detection.



### Western Blotting

**Image 2.** Western blot analysis of Rat Liver cell lysates showing detection of ~42.5 kDa Kir4.1 protein using Rabbit Anti-Kir4.1 Polyclonal Antibody. Lane 1: Molecular Weight Ladder (MW). Lane 2: Rat Liver cell lysates. Load: 15 µg. Block: 5% Skim Milk in 1X TBST. Primary Antibody: Rabbit Anti-Kir4.1 Polyclonal Antibody at 1:1000 for 2 hours at RT. Secondary Antibody: Goat Anti-Rabbit IgG: HRP at 1:2000 for 60 min at RT. Color Development: ECL solution for 6 min in RT. Predicted/Observed Size: ~42.5 kDa.



### Immunofluorescence (fixed cells)

**Image 3.** Immunocytochemistry/Immunofluorescence analysis using Rabbit Anti-Kir4.1 Polyclonal Antibody. Tissue: Colon carcinoma cell line (RKO). Species: Human. Fixation: 4% Formaldehyde for 15 min at RT. Primary Antibody: Rabbit Anti-Kir4.1 Polyclonal Antibody at 1:100 for 60 min at RT. Secondary Antibody: Goat Anti-Rabbit ATTO 488 at 1:100 for 60 min at RT. Counterstain: Phalloidin Texas Red F-Actin stain; DAPI (blue) nuclear stain at 1:1000, 1:5000 for 60 min at RT, 5 min at RT. Localization: Membrane, Cytoplasm. Magnification: 60X. (A) DAPI nuclear stain. (B) Phalloidin Texas Red F-Actin stain. (C) Kir4.1 Antibody. (D) Composite.