

Datasheet for ABIN5066696  
**anti-CCR2 antibody (Atto 390)**[Go to Product page](#)

## 2 Images

## Overview

Quantity:	100 µg
Target:	CCR2
Reactivity:	Human
Host:	Rabbit
Clonality:	Polyclonal
Conjugate:	This CCR2 antibody is conjugated to Atto 390
Application:	Western Blotting (WB), Immunohistochemistry (IHC)

## Product Details

Immunogen:	Synthetic peptide of Human CCR2
Isotype:	IgG
Specificity:	Detects ~42 kDa.
Cross-Reactivity:	Human, Rat
Purification:	Peptide Affinity Purified

## Target Details

Target:	CCR2
Alternative Name:	CCR2 ( <a href="#">CCR2 Products</a> )
Gene ID:	729230
NCBI Accession:	<a href="#">NP_001116513</a>

## Target Details

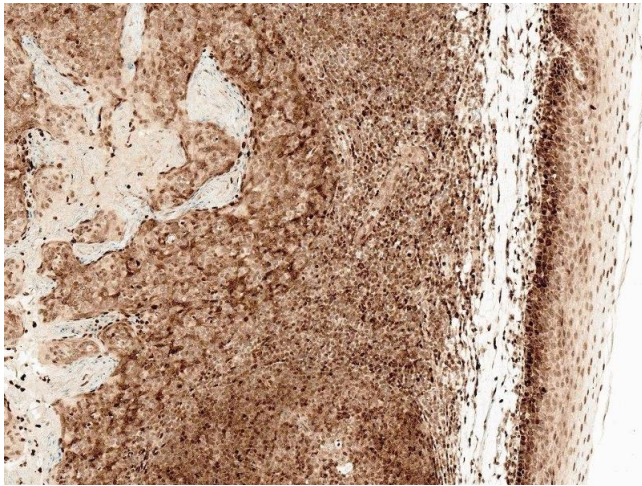
UniProt:	<a href="#">P41597</a>
Pathways:	<a href="#">cAMP Metabolic Process</a> , <a href="#">Regulation of Leukocyte Mediated Immunity</a> , <a href="#">Positive Regulation of Immune Effector Process</a>

## Application Details

Application Notes:	<ul style="list-style-type: none"><li>• WB (1:1000)</li><li>• IHC (1:50)</li><li>• optimal dilutions for assays should be determined by the user.</li></ul>
Comment:	A 1:1000 dilution of ABIN5066696 was sufficient for detection of CCR2 in 15 µg of rat brain cell lysates by ECL immunoblot analysis using goat anti-rabbit IgG:HRP as the secondary antibody.
Restrictions:	For Research Use only

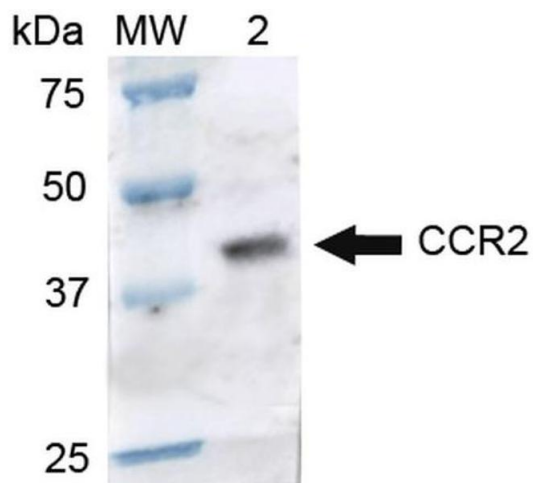
## Handling

Format:	Liquid
Concentration:	1 mg/mL
Buffer:	PBS, 50 % glycerol, 0.09 % sodium azide, Storage buffer may change when conjugated
Preservative:	Sodium azide
Precaution of Use:	This product contains Sodium azide: a POISONOUS AND HAZARDOUS SUBSTANCE which should be handled by trained staff only.
Storage:	4 °C
Storage Comment:	Conjugated antibodies should be stored at 4°C



#### Immunohistochemistry

**Image 1.** Immunohistochemistry analysis using Rabbit Anti-CCR2 Polyclonal Antibody (ABIN5066696). Tissue: Tonsil. Species: Human. Fixation: Formalin Fixed Paraffin-Embedded. Primary Antibody: Rabbit Anti-CCR2 Polyclonal Antibody (ABIN5066696) at 1:50 for 30 min at RT. Counterstain: Hematoxylin. Magnification: 10X. HRP-DAB Detection.



#### Western Blotting

**Image 2.** Western blot analysis of Rat Brain cell lysates showing detection of ~41.9 kDa CCR2 protein using Rabbit Anti-CCR2 Polyclonal Antibody. Lane 1: Molecular Weight Ladder (MW). Lane 2: Rat Brain cell lysates. Load: 15 µg. Block: 5% Skim Milk in 1X TBST. Primary Antibody: Rabbit Anti-CCR2 Polyclonal Antibody at 1:1000 for 2 hours at RT. Secondary Antibody: Goat Anti-Rabbit IgG: HRP at 1:1000 for 60 min at RT. Color Development: ECL solution for 6 min in RT. Predicted/Observed Size: ~41.9 kDa.