

Datasheet for ABIN5066725
anti-PTGS1 antibody (FITC)[Go to Product page](#)

4 Images

Overview

Quantity:	100 µg
Target:	PTGS1
Reactivity:	Human
Host:	Rabbit
Clonality:	Polyclonal
Conjugate:	This PTGS1 antibody is conjugated to FITC
Application:	Western Blotting (WB), Immunofluorescence (IF), Immunocytochemistry (ICC)

Product Details

Immunogen:	Synthetic peptide of Human Cyclooxygenase
Isotype:	IgG
Specificity:	Detects ~75 kDa.
Cross-Reactivity:	Human, Mouse, Rat
Purification:	Peptide Affinity Purified

Target Details

Target:	PTGS1
Alternative Name:	Cyclooxygenase 1 (PTGS1 Products)
Gene ID:	5742
NCBI Accession:	NP_000953

Target Details

UniProt: [P23219](#)

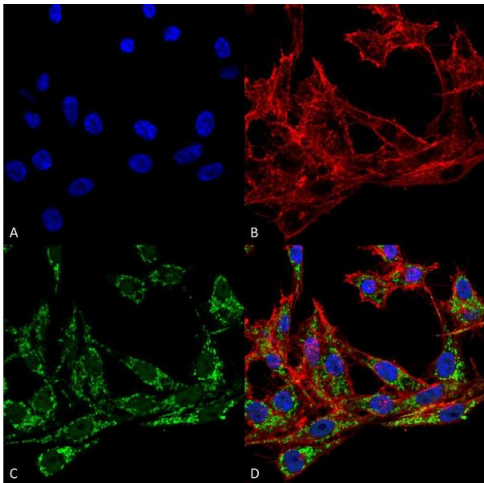
Application Details

Application Notes:	<ul style="list-style-type: none">• WB (1:1000)• ICC/IF (1:100)• optimal dilutions for assays should be determined by the user.
Comment:	A 1:1000 dilution of ABIN5066725 was sufficient for detection of Cyclooxygenase in 15 µg of Human HeLa Cell Lysates by ECL immunoblot analysis using goat anti-rabbit IgG:HRP as the secondary antibody.
Restrictions:	For Research Use only

Handling

Format:	Liquid
Concentration:	1 mg/mL
Buffer:	PBS, 50 % glycerol, 0.09 % sodium azide, Storage buffer may change when conjugated
Preservative:	Sodium azide
Precaution of Use:	This product contains Sodium azide: a POISONOUS AND HAZARDOUS SUBSTANCE which should be handled by trained staff only.
Storage:	4 °C
Storage Comment:	Conjugated antibodies should be stored at 4°C

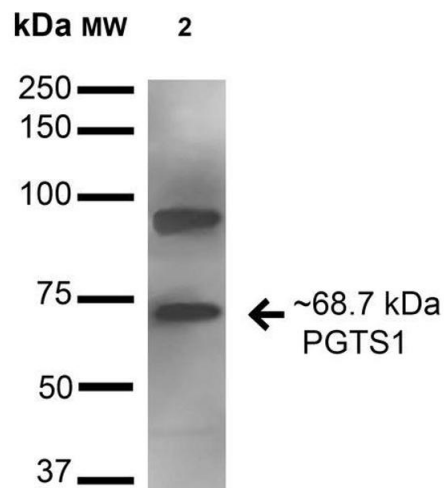
Images



Immunofluorescence (fixed cells)

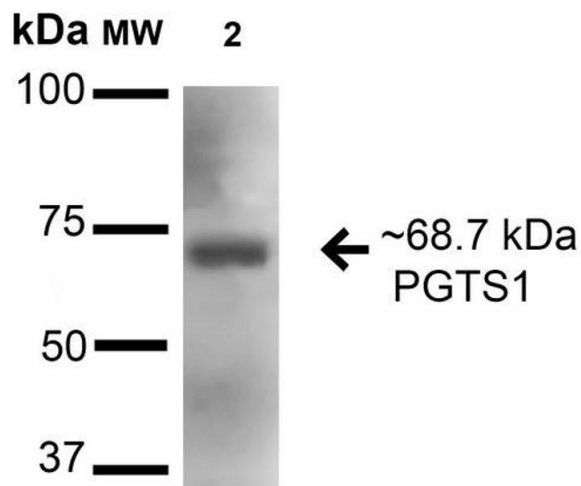
Image 1. Immunocytochemistry/Immunofluorescence analysis using Rabbit Anti-Cyclooxygenase 1 Polyclonal Antibody . Tissue: Colon carcinoma cell line (RKO). Species: Human. Fixation: 4% Formaldehyde for 15 min at RT. Primary Antibody: Rabbit Anti-Cyclooxygenase 1 Polyclonal Antibody at 1:100 for 60 min at RT. Secondary Antibody: Goat Anti-Rabbit ATTO 488 at 1:100 for 60 min at RT. Counterstain: Phalloidin Texas Red F-Actin stain; DAPI (blue)

nuclear stain at 1:1000, 1:5000 for 60 min at RT, 5 min at RT. Localization: Microsome Membrane, Endoplasmic Reticulum Membrane, Membrane. Magnification: 60X. (A) DAPI nuclear stain. (B) Phalloidin Texas Red F-Actin stain. (C) Cyclooxygenase 1 Antibody. (D) Composite.



Western Blotting

Image 2. Western blot analysis of Human HeLa and 293Trap cell lysates showing detection of 68.7 kDa Cyclooxygenase 1 protein using Rabbit Anti-Cyclooxygenase 1 Polyclonal Antibody. Lane 1: Molecular Weight Ladder (MW). Lane 2: Human HeLa and 293Trap cell lysates. Load: 15 µg. Block: 2% BSA and 2% Skim Milk in 1X TBST. Primary Antibody: Rabbit Anti-Cyclooxygenase 1 Polyclonal Antibody at 1:1000 for 16 hours at 4°C. Secondary Antibody: Goat Anti-Rabbit HRP at 1:2000 for 60 min at RT. Color Development: ECL solution for 6 min in RT. Predicted/Observed Size: 68.7 kDa.



Western Blotting

Image 3. Western blot analysis of Mouse Kidney cell lysates showing detection of 68.7 kDa Cyclooxygenase 1 protein using Rabbit Anti-Cyclooxygenase 1 Polyclonal Antibody. Lane 1: Molecular Weight Ladder (MW). Lane 2: Mouse Kidney cell lysates. Load: 15 µg. Block: 2% BSA and 2% Skim Milk in 1X TBST. Primary Antibody: Rabbit Anti-Cyclooxygenase 1 Polyclonal Antibody at 1:1000 for 16 hours at 4°C. Secondary Antibody: Goat Anti-Rabbit HRP at 1:2000 for 60 min at RT. Color Development: ECL solution for 6 min in RT. Predicted/Observed Size: 68.7 kDa.

Please check the [product details page](#) for more images. Overall 4 images are available for ABIN5066725.