



[Go to Product page](#)

Datasheet for ABIN5066832

anti-Metallothionein antibody (Biotin)

1 Image

Overview

Quantity:	100 µg
Target:	Metallothionein (MT)
Reactivity:	Pseudomonas aeruginosa
Host:	Rabbit
Clonality:	Polyclonal
Conjugate:	This Metallothionein antibody is conjugated to Biotin
Application:	Western Blotting (WB)

Product Details

Immunogen:	Synthetic peptide from the mid-protein of Pseudomonas aeruginosa Metallothionein
Isotype:	IgG
Specificity:	Detects ~36 kDa.
Cross-Reactivity:	Pseudomonas aeruginosa
Purification:	Peptide Affinity Purified

Target Details

Target:	Metallothionein (MT)
Alternative Name:	Metallothionein (MT Products)
UniProt:	Q9I1X5
Pathways:	Transition Metal Ion Homeostasis , Regulation of Cell Size , Regulation of Carbohydrate

Target Details

Metabolic Process, Protein targeting to Nucleus

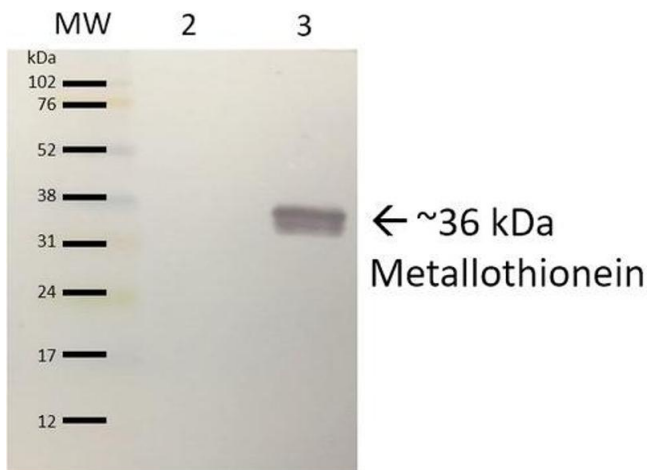
Application Details

Application Notes:	<ul style="list-style-type: none">• WB (1:1000)• optimal dilutions for assays should be determined by the user.
Comment:	A 1:1000 dilution of ABIN5066832 was sufficient for detection of Metallothionein in 15 µg of pseudomonas aeruginosa purified Metallothionein (pmtA-GST) protein by ECL immunoblot analysis using goat anti-rabbit IgG:HRP as the secondary antibody.
Restrictions:	For Research Use only

Handling

Format:	Liquid
Concentration:	1 mg/mL
Buffer:	PBS, 50 % glycerol, 0.09 % sodium azide, Storage buffer may change when conjugated
Preservative:	Sodium azide
Precaution of Use:	This product contains Sodium azide: a POISONOUS AND HAZARDOUS SUBSTANCE which should be handled by trained staff only.
Storage:	4 °C
Storage Comment:	Conjugated antibodies should be stored at 4°C

Images



Western Blotting

Image 1. Western blot analysis of *Pseudomonas aeruginosa* Purified protein showing detection of ~36 kDa (9.07 kDa Metallothionein and 26.4 kDa GST) Metallothionein protein using Rabbit Anti-Metallothionein Polyclonal Antibody (ABIN5066832). Lane 1: Molecular Weight Ladder (MW). Lane 2: Blank. Lane 3: *Pseudomonas aeruginosa* purified protein with GST tag.. Load: 25 µg. Block: 1 % milk, 2 % BSA. Primary Antibody: Rabbit Anti-

Metallothionein Polyclonal Antibody (ABIN5066832) at 1:1000 for 16 hours at 4 °C. Secondary Antibody: Mouse Anti-Rabbit IgG: AP at 1:1000 for 60 min at RT. Color Development: Alkaline phosphate activity colorimetric assay. Predicted/Observed Size: ~36 kDa (9.07 kDa Metallothionein and 26.4 kDa GST). Courtesy of: Michael Lynes and Amy Thees, University of Connecticut.