

Datasheet for ABIN5066879

anti-SCNN1B antibody (AA 617-638) (Atto 594)[Go to Product page](#)**1** Image

Overview

Quantity:	100 µg
Target:	SCNN1B
Binding Specificity:	AA 617-638
Reactivity:	Rat
Host:	Mouse
Clonality:	Monoclonal
Conjugate:	This SCNN1B antibody is conjugated to Atto 594
Application:	Western Blotting (WB), Immunohistochemistry (IHC)

Product Details

Immunogen:	Synthetic peptide from the C-terminal of Rat ENaC beta (aa. 617-638)
Clone:	7B8
Isotype:	IgG1
Specificity:	Detects ~87 kDa.
Cross-Reactivity:	Mouse
Purification:	Protein G Purified

Target Details

Target:	SCNN1B
Alternative Name:	ENaC beta (SCNN1B Products)

Target Details

Background: The Epithelial Sodium Channel (ENaC) is a membrane ion channel permeable to Na⁺ ions. It is located in the apical plasma membrane of epithelia in the kidneys, lung, colon, and other tissues where it plays a role in trans epithelial Na⁺-ion transport (1). Specifically Na⁺ transport via ENaC occurs across many epithelial surfaces, and plays a key role in regulating salt and water absorption (2). ENaCs are composed of three structurally related subunits that form a tetrameric channel, alpha, beta, and gamma. The expression of its alpha and beta subunits is enhanced as keratinocytes differentiate (3, 4). The beta and gamma-ENaC subunits are essential for edema fluid to exert its maximal effect on net fluid absorption by distal lung epithelia(5). And it has been concluded that the subunits are differentially expressed in the retina of mice with ocular hypertension, therefore the up-regulation of alpha-ENaC proteins could serve as a protection mechanism against elevated intraocular pressure (6).

Gene ID: 24767

NCBI Accession: [NP_036780](#)

UniProt: [P37090](#)

Application Details

Application Notes:

- WB (1:1000)
- IHC (1:150)
- optimal dilutions for assays should be determined by the user.

Comment: A 1:1000 dilution of ABIN5066879 was sufficient for detection of ENaC beta in 15 µg of Mouse whole kidney lysate by ECL immunoblot analysis using goat anti-mouse IgG:HRP as the secondary antibody.

Restrictions: For Research Use only

Handling

Format: Liquid

Concentration: 1 mg/mL

Buffer: PBS pH 7.4, 50 % glycerol, 0.09 % sodium azide, Storage buffer may change when conjugated

Preservative: Sodium azide

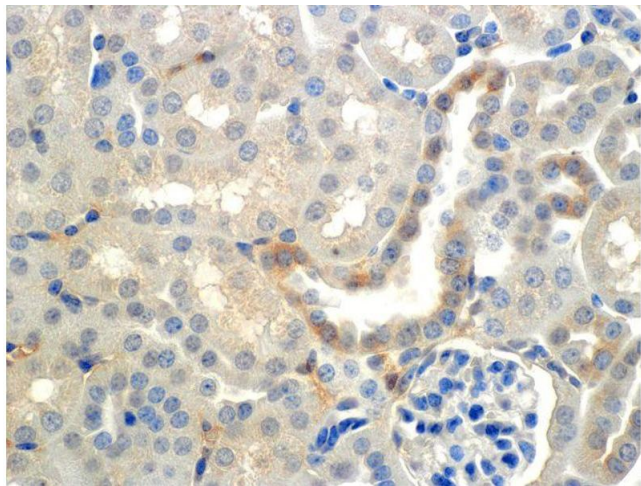
Precaution of Use: This product contains Sodium azide: a POISONOUS AND HAZARDOUS SUBSTANCE which should be handled by trained staff only.

Handling

Storage: 4 °C

Storage Comment: Conjugated antibodies should be stored at 4°C

Images



Immunohistochemistry

Image 1. Immunohistochemistry analysis using Mouse Anti-ENaC beta Monoclonal Antibody, Clone 7B8 . Tissue: Kidney (cortex). Species: Mouse. Primary Antibody: Mouse Anti-ENaC beta Monoclonal Antibody at 1:150. Localization: Collecting duct principal cells. Magnification: 60X.