



[Go to Product page](#)

Datasheet for ABIN5067093  
**anti-Citrulline antibody (Atto 488)**

3 Images

Overview

Quantity:	100 µg
Target:	Citrulline (CIT)
Reactivity:	Please inquire
Host:	Mouse
Clonality:	Monoclonal
Conjugate:	This Citrulline antibody is conjugated to Atto 488
Application:	Western Blotting (WB), ELISA, Immunocytochemistry (ICC), Immunohistochemistry (IHC), Immunofluorescence (IF)

Product Details

Immunogen:	Synthetic L-Citrulline conjugated to Keyhole Limpet Hemocyanin (KLH).
Clone:	2D3-1
Isotype:	IgG1
Specificity:	Specific for citrulline residues on modified proteins. Tested using citrulline conjugated Bovine Serum Albumin (BSA).
Purification:	Protein G Purified

Target Details

Target:	Citrulline (CIT)
Alternative Name:	Citrulline ( <a href="#">CIT Products</a> )

## Target Details

---

Target Type: Amino Acid

## Application Details

---

Application Notes:

- WB (1:1000)
- ICC/IF (1:50)
- ELISA (1:1000)
- optimal dilutions for assays should be determined by the user.

Comment: A 1:1000 dilution of ABIN5067093 was sufficient for detection of Citrulline in 2 µg of Citrulline conjugated to BSA by ECL immunoblot analysis using Goat Anti-Mouse IgG:HRP as the secondary Antibody.

Restrictions: For Research Use only

## Handling

---

Format: Liquid

Concentration: 1 mg/mL

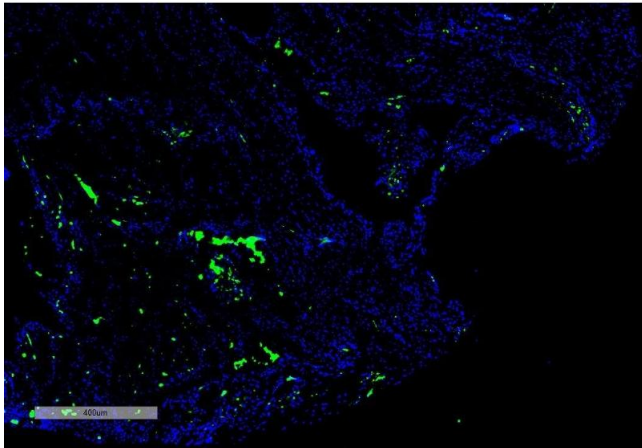
Buffer: PBS pH 7.4, 50 % glycerol, 0.09 % Sodium azide, Storage buffer may change when conjugated

Preservative: Sodium azide

Precaution of Use: This product contains Sodium azide: a POISONOUS AND HAZARDOUS SUBSTANCE which should be handled by trained staff only.

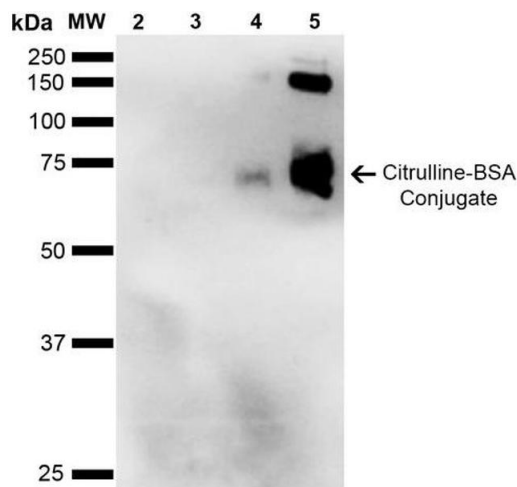
Storage: 4 °C

Storage Comment: Conjugated antibodies should be stored at 4°C



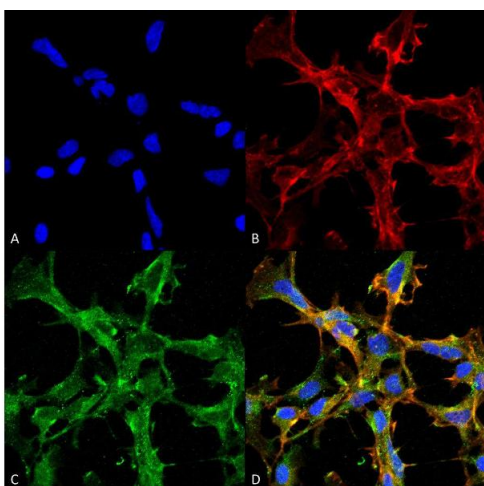
### Immunohistochemistry

**Image 1.** Immunohistochemistry analysis using Mouse Anti-Citrulline Monoclonal Antibody, Clone 2D3.1 (ABIN5067093). Tissue: Thyroid Cancer. Species: Human. Primary Antibody: Mouse Anti-Citrulline Monoclonal Antibody (ABIN5067093) at 1:100 for Overnight at 4C, then 30 min at 37C. Secondary Antibody: Goat Anti-Mouse IgG (H+L): FITC for 45 min at 37C. Counterstain: DAPI for 3 min at RT. Magnification: 5X.



### Western Blotting

**Image 2.** Western Blot analysis of Citrulline-BSA Conjugate showing detection of 67 kDa Citrulline-BSA using Mouse Anti-Citrulline Monoclonal Antibody, Clone 2D3-1B9. Lane 1: Molecular Weight Ladder (MW). Lane 2: BSA (0.5 µg). Lane 3: BSA (2.0 µg). Lane 4: Citrulline-BSA (0.5 µg). Lane 5: Citrulline-BSA (2.0 µg). Block: 5% Skim Milk in TBST. Primary Antibody: Mouse Anti-Citrulline Monoclonal Antibody at 1:1000 for 2 hours at RT. Secondary Antibody: Goat Anti-Mouse IgG: HRP at 1:2000 for 60 min at RT. Color Development: ECL solution for 5 min in RT. Predicted/Observed Size: 67 kDa.



### Immunofluorescence (fixed cells)

**Image 3.** Immunocytochemistry/Immunofluorescence analysis using Mouse Anti-Citrulline Monoclonal Antibody, Clone 2D3.1. Tissue: Embryonic kidney cells (HEK293). Species: Human. Fixation: 5% Formaldehyde for 5 min. Primary Antibody: Mouse Anti-Citrulline Monoclonal Antibody at 1:50 for 30-60 min at RT. Secondary Antibody: Goat Anti-Mouse Alexa Fluor 488 at 1:1500 for 30-60 min at RT. Counterstain: Phalloidin Alexa Fluor 633 F-Actin stain; DAPI (blue) nuclear stain at 1:250, 1:50000 for 30-60 min at RT. Magnification: 20X (2X Zoom). (A) DAPI (blue) nuclear stain. (B) Phalloidin Alex Fluor 633 F-Actin stain. (C)

Citrulline Antibody (D) Composite. Courtesy of: Dr. Robert Burke, University of Victoria.