



[Go to Product page](#)

Datasheet for ABIN5067527

Montelukast sodium

1 Image

Overview

Quantity: 250 mg

Product Details

Purpose:	Leukotriene CysLT1 antagonist
Purity:	>98 % (HPLC), NMR (Conforms)
Chemical Name:	1-[[[(1R)-1-[3-(1E)-2-(7-chloro-2-quinolinyl)ethenyl]phenyl]-3-[2-(1-hydroxy-1-methylethyl)phenyl]propyl]thio]-methyl]-cyclopropaneacetic acid, monosodium salt, Montelukast sodium, Montelukast monosodium salt, MK-0476, MK-476, KS-1087
Formula:	C ₃₅ H ₃₅ ClN ₀ O ₃ S · Na
Solubility:	Soluble in DMSO (50 mg/ml), or water (30 mg/ml), or ethanol (60 mg/ml)

Target Details

Molecular Weight:	608.2
CAS-No:	151767-02-1

Application Details

Comment:	Source: Synthetic. Appearance: Powder
Restrictions:	For Research Use only

Handling

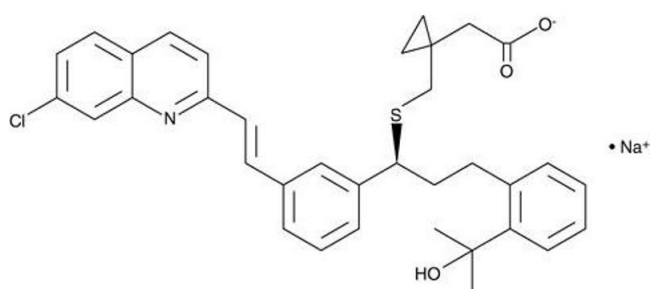
Handling Advice: Classification: D2A Very Toxic Material Causing Other Toxic Effects - Reproductive hazard E

Handling

Corrosive Material - Corrosive to skin Hazard statement(s): H318 Causes serious eye damage.
H361fd Suspected of damaging fertility. Suspected of damaging the unborn child.
Precautionary statement(s): P280 Wear protective gloves/ eye protection/ face protection.
P305 + P351 + P338 IF IN EYES: Rinse cautiously with water for several minutes. Remove contact lenses, if present and easy to do. Continue rinsing.

Storage: -20 °C

Images



Molecule

Image 1. Chemical structure of Montelukast sodium , a Leukotriene CysLT1 antagonist. CAS #: 151767-02-1. Molecular Formula: C₃₅H₃₅ClNO₃S • Na. Molecular Weight: 608.2 g/mol.