

Datasheet for ABIN5067533

Clozapine

1 Image



[Go to Product page](#)

Overview

Quantity: 250 mg

Product Details

Purpose: Dopamine receptor antagonist

Purity: >98 % (TLC), NMR conforms

Chemical Name: 3-chloro-6-(4-methylpiperazin-1-yl)-5H-benzo[c][1,5]benzodiazepine, 8-Chloro-11-(4-methyl-1-piperazinyl)-5H-dibenzo[b,e][1,4]-diazepine, Clozapine, Leponex, Clozapin, CLOZARIL, Fazaclo

Formula: C₁₈H₁₉ClN₄

Solubility: Soluble in DMSO (30 mg/ml)

Target Details

Molecular Weight: 326.8

CAS-No: 5786-21-0

Application Details

Comment: Source: Synthetic. Appearance: Yellow powder

Restrictions: For Research Use only

Handling

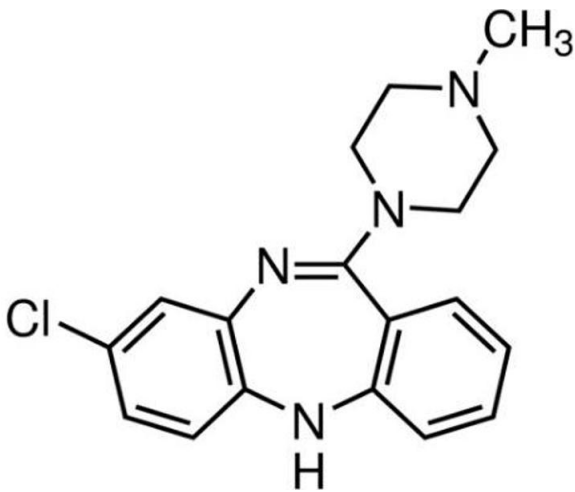
Handling Advice: Classification: D1B Toxic Material Causing Immediate and Serious Toxic Effects - Toxic by ingestion D2A Very Toxic Material Causing Other Toxic Effects - Teratogen D2B Toxic Material

Handling

Causing Other Toxic Effects - Carcinogen, Moderate eye irritant, Mutagen Hazard statement(s): H301 Toxic if swallowed. H341 Suspected of causing genetic defects. H351 Suspected of causing cancer. H361 Suspected of damaging fertility or the unborn child. Precautionary statement(s): P281 Use personal protective equipment as required. P301 + P310 IF SWALLOWED: Immediately call a POISON CENTER or doctor/ physician.

Storage: -20 °C

Images



Molecule

Image 1. Chemical structure of Clozapine, a Dopamine receptor antagonist. CAS #: 5786-21-0. Molecular Formula: C₁₈H₁₉ClN₄. Molecular Weight: 326.8 g/mol.