

## Datasheet for ABIN5067738 **anti-CD16 antibody (FITC)**



[Go to Product page](#)

### 1 Image

#### Overview

Quantity:	100 tests
Target:	CD16
Reactivity:	Human, Rhesus Monkey, Cynomolgus, Baboon
Host:	Mouse
Clonality:	Monoclonal
Conjugate:	This CD16 antibody is conjugated to FITC
Application:	Flow Cytometry (FACS)

#### Product Details

Purpose:	CD16 FITC Antibody
Immunogen:	Human peripheral blood T lymphocytes
Clone:	3G8
Isotype:	IgG1, kappa
Characteristics:	The clone 3G8, a mouse monoclonal antibody, binds to the 50-65 kDa transmembrane protein of IgG FcγRIII known as CD16, a surface antigen commonly associated with human NK cells. In addition to surface expression on NK cells, CD16 is expressed on activated monocytes, macrophages, neutrophils, and placental trophoblasts in humans. 3G8 binds either with the aggregated IgG or IgG-antigen complex which functions in NK cell activation, phagocytosis, and antibody-dependent cell-mediated cytotoxicity (ADCC).
Purification:	Purified
Purity:	>95 %

## Product Details

---

Grade: GMP Grade

## Target Details

---

Target: CD16

Alternative Name: CD16 ([CD16 Products](#))

UniProt: [Q92835](#)

Pathways: [Regulation of Leukocyte Mediated Immunity, Positive Regulation of Immune Effector Process](#)

## Application Details

---

Application Notes: Optimal working dilution should be determined by the investigator.

Restrictions: For Research Use only

## Handling

---

Format: Liquid

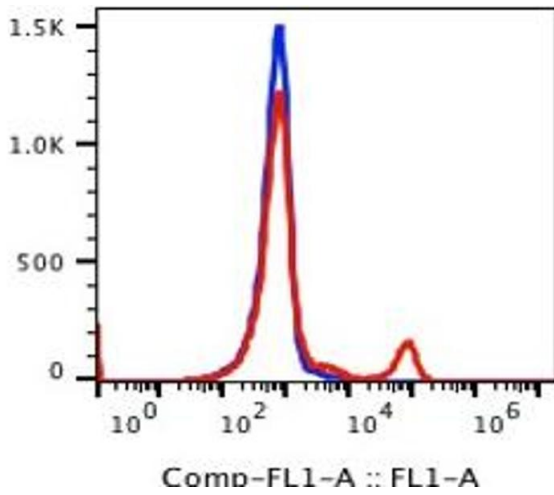
Buffer: PBS pH 7.2, 0.2 % (w/v) BSA, 0.09 % (w/v) sodium azide

Preservative: Sodium azide

Precaution of Use: This product contains Sodium azide: a POISONOUS AND HAZARDOUS SUBSTANCE which should be handled by trained staff only.

Storage: 4 °C

Storage Comment: 2-8°C, Conjugated antibodies should never be frozen.



### Flow Cytometry

Image 1.