

## Datasheet for ABIN5067756 **anti-ETS1 antibody**

### 1 Image



[Go to Product page](#)

### Overview

|              |  |
|--------------|--|
| Quantity:    | 100 µg                                       |
| Target:      | ETS1   |
| Reactivity:  | Human  |
| Host:        | Mouse  |
| Clonality:   | Monoclonal                                   |
| Conjugate:   | This ETS1 antibody is un-conjugated          |
| Application: | Western Blotting (WB), Flow Cytometry (FACS) |

### Product Details

|                  |   |
|------------------|---|
| Purpose:         | Anti-ETS1 Unconjugated Antibody   |
| Immunogen:       | Recombinant ETS1 protein  |
| Clone:           | E44   |
| Isotype:         | IgG1, kappa   |
| Characteristics: | ETS1 belongs to a transcription factor family that regulates expression of several genes participating in extracellular matrix remodeling. ETS1 is expressed in many gastric carcinomas and oral squamous cell carcinomas. Members of the ETS family regulate a variety of genes involved in stem cell development, cell senescence, and tumorigenesis. This family of transcription factors recognizes the core consensus DNA sequence GGAA/T of target genes. |
| Purification:    | Purified  |
| Purity:          | >95 %   |

## Product Details

---

Grade: GMP Grade

## Target Details

---

Target: ETS1

Alternative Name: ETS1 ([ETS1 Products](#))

## Application Details

---

Application Notes: Optimal working dilution should be determined by the investigator.

Restrictions: For Research Use only

## Handling

---

Format: Liquid

Buffer: PBS pH 7.2, 0.1 % (w/v) BSA, 0.09 % (w/v) sodium azide

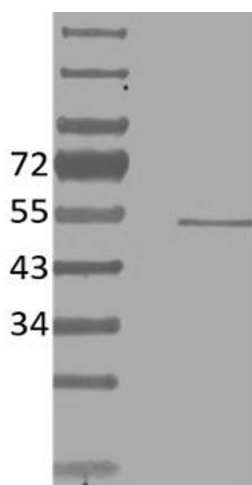
Preservative: Sodium azide

Precaution of Use: This product contains Sodium azide: a POISONOUS AND HAZARDOUS SUBSTANCE which should be handled by trained staff only.

Storage: 4 °C

## Images

---



**Image 1.**