

Datasheet for ABIN5067769
anti-CD7 antibody (Biotin)[Go to Product page](#)

2 Images

Overview

Quantity:	100 µg
Target:	CD7
Reactivity:	Human
Host:	Mouse
Clonality:	Monoclonal
Conjugate:	This CD7 antibody is conjugated to Biotin
Application:	Flow Cytometry (FACS)

Product Details

Immunogen:	Human Leukocytes
Clone:	124-1D1
Isotype:	IgG1 kappa
Characteristics:	The clone 124-1D1, a mouse monoclonal antibody selectively recognizes ~40 kDa type I transmembrane glycoprotein antigen known as CD7. It is a member of Ig superfamily and abundantly expressed on the cell surface of the human T cells and a subset of NK cells. The CD7 is expressed throughout the process of T lymphocyte differentiation and is present on 85 % to 90 % of peripheral blood T cells. It is also expressed on acute lymphocytic leukemia (ALL) and some type of acute myeloid leukemia (AML) cells.
Purification:	Purified
Purity:	>95 %
Grade:	GMP Grade

Target Details

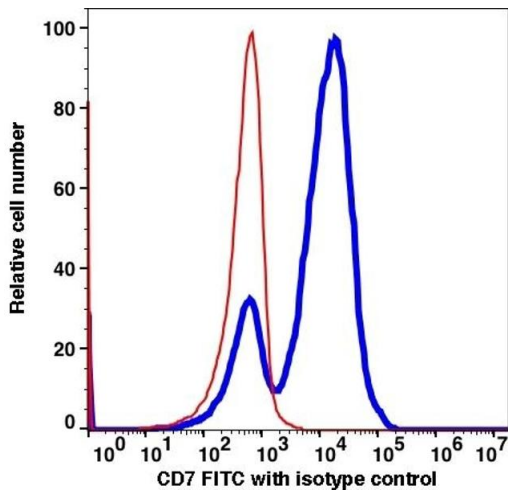
Target:	CD7
Alternative Name:	CD7 (CD7 Products)
Background:	The clone 124-1D1, a mouse monoclonal antibody selectively recognizes ~40 kDa type I transmembrane glycoprotein antigen known as CD7. It is a member of Ig superfamily and abundantly expressed on the cell surface of the human T cells and a subset of NK cells. The CD7 is expressed throughout the process of T lymphocyte differentiation and is present on 85 % to 90 % of peripheral blood T cells. It is also expressed on acute lymphocytic leukemia (ALL) and some type of acute myeloid leukemia (AML) cells.
NCBI Accession:	NM_006137
UniProt:	P09564
Pathways:	Cell-Cell Junction Organization

Application Details

Restrictions:	For Research Use only
---------------	-----------------------

Handling

Format:	Liquid
Buffer:	PBS pH 7.2, 0.09 % sodium azide
Preservative:	Sodium azide
Precaution of Use:	This product contains Sodium azide: a POISONOUS AND HAZARDOUS SUBSTANCE which should be handled by trained staff only.
Storage:	4 °C



Flow Cytometry

Image 1.

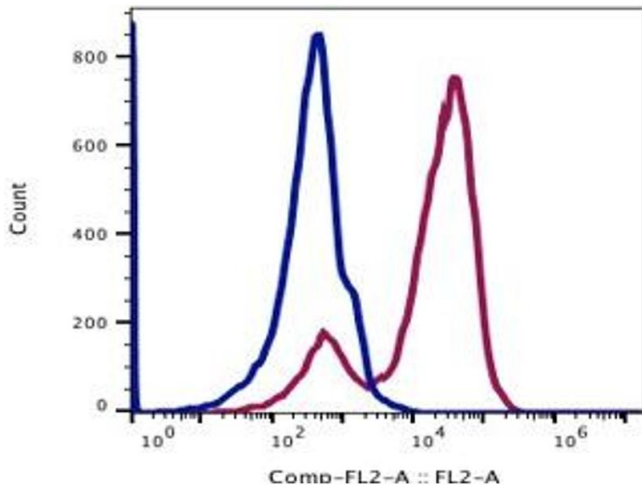


Image 2.