

## Datasheet for ABIN5067802 **anti-MME antibody (FITC)**



[Go to Product page](#)

### 1 Image

#### Overview

Quantity:	100 tests
Target:	MME
Reactivity:	Human
Host:	Mouse
Clonality:	Monoclonal
Conjugate:	This MME antibody is conjugated to FITC
Application:	Flow Cytometry (FACS)

#### Product Details

Purpose:	CD10 FITC Antibody
Immunogen:	Raji cells
Clone:	FR4D11
Isotype:	IgG1, kappa
Characteristics:	<p>The clone FR4D11, a mouse monoclonal antibody recognizes a 100 kDa protein that has neutral metalloendopeptidase activity and inactivates a variety of biologically active peptides known as CD10. It is also known as common acute lymphoblastic leukemia antigen (CALLA). CD10 is a type II cell surface glycoprotein typically expressed on acute lymphoblastic leukemias (ALL). Normal, healthy precursors of B and T cells and granulocytes also express CD10. CD10 plays important role in the development process of B cells the in germinal center.</p>
Purification:	Purified
Purity:	>95 %

## Product Details

---

Grade: GMP Grade

## Target Details

---

Target: MME

Alternative Name: [CD10 \(MME Products\)](#)

Gene ID: 4311

NCBI Accession: [NC\\_000003](#)

UniProt: [P08473](#)

Pathways: [RTK Signaling, Peptide Hormone Metabolism, Regulation of Systemic Arterial Blood Pressure by Hormones, Smooth Muscle Cell Migration](#)

## Application Details

---

Application Notes: Optimal working dilution should be determined by the investigator.

Restrictions: For Research Use only

## Handling

---

Format: Liquid

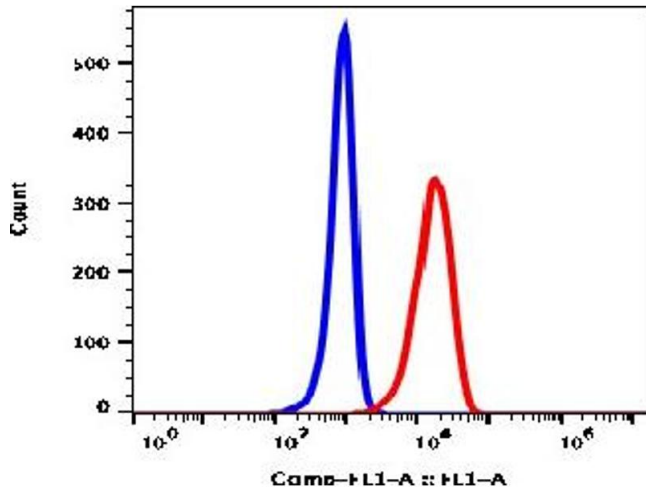
Buffer: PBS pH 7.2, 0.2 % (w/v) BSA, 0.09 % (w/v) sodium azide

Preservative: Sodium azide

Precaution of Use: This product contains Sodium azide: a POISONOUS AND HAZARDOUS SUBSTANCE which should be handled by trained staff only.

Storage: 4 °C

Storage Comment: 2-8°C, Conjugated antibodies should never be frozen.



Flow Cytometry

Image 1.