

Datasheet for ABIN5067805
anti-MME antibody (PE)



[Go to Product page](#)

1 Image

Overview

Quantity:	100 tests
Target:	MME
Reactivity:	Human
Host:	Mouse
Clonality:	Monoclonal
Conjugate:	This MME antibody is conjugated to PE
Application:	Flow Cytometry (FACS)

Product Details

Purpose:	CD10 PE Antibody
Immunogen:	Raji cells
Clone:	FR4D11
Isotype:	IgG1, kappa
Characteristics:	The clone FR4D11, a mouse monoclonal antibody recognizes a 100 kDa protein that has neutral metalloendopeptidase activity and inactivates a variety of biologically active peptides known as CD10. It is also known as common acute lymphoblastic leukemia antigen (CALLA). CD10 is a type II cell surface glycoprotein typically expressed on acute lymphoblastic leukemias (ALL). Normal, healthy precursors of B and T cells and granulocytes also express CD10. CD10 plays important role in the development process of B cells the in germinal center.
Purification:	Purified
Purity:	>95 %

Product Details

Grade: GMP Grade

Target Details

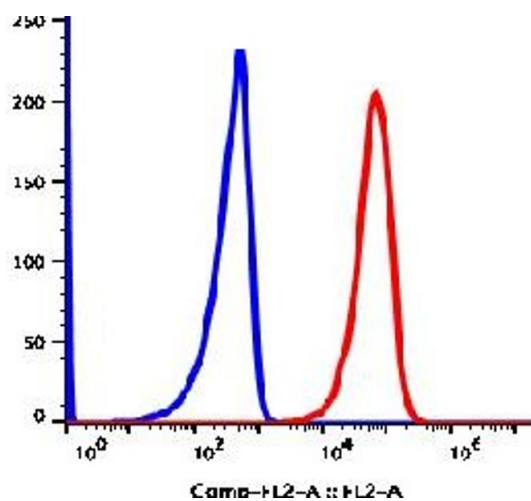
Target:	MME
Alternative Name:	CD10 (MME Products)
Gene ID:	4311
NCBI Accession:	NC_000003
UniProt:	P08473
Pathways:	RTK Signaling, Peptide Hormone Metabolism, Regulation of Systemic Arterial Blood Pressure by Hormones, Smooth Muscle Cell Migration

Application Details

Application Notes:	Optimal working dilution should be determined by the investigator.
Restrictions:	For Research Use only

Handling

Format:	Liquid
Buffer:	PBS pH 7.2, 0.2 % (w/v) BSA, 0.09 % (w/v) sodium azide
Preservative:	Sodium azide
Precaution of Use:	This product contains Sodium azide: a POISONOUS AND HAZARDOUS SUBSTANCE which should be handled by trained staff only.
Storage:	4 °C
Storage Comment:	2-8°C, Conjugated antibodies should never be frozen.



Flow Cytometry

Image 1.