

Datasheet for ABIN5067810 **anti-MME antibody (Biotin)**

2 Images



[Go to Product page](#)

Overview

Quantity:	100 µg
Target:	MME
Reactivity:	Human
Host:	Mouse
Clonality:	Monoclonal
Conjugate:	This MME antibody is conjugated to Biotin
Application:	Flow Cytometry (FACS)

Product Details

Purpose:	CD10 Biotin Antibody
Immunogen:	Raji cells
Clone:	FR4D11
Isotype:	IgG1, kappa
Characteristics:	<p>The clone FR4D11, a mouse monoclonal antibody recognizes a 100 kDa protein that has neutral metalloendopeptidase activity and inactivates a variety of biologically active peptides known as CD10. It is also known as common acute lymphoblastic leukemia antigen (CALLA). CD10 is a type II cell surface glycoprotein typically expressed on acute lymphoblastic leukemias (ALL). Normal, healthy precursors of B and T cells and granulocytes also express CD10. CD10 plays important role in the development process of B cells the in germinal center.</p>
Purification:	Purified
Purity:	>95 %

Product Details

Grade: GMP Grade

Target Details

Target: MME

Alternative Name: [CD10 \(MME Products\)](#)

Gene ID: 4311

NCBI Accession: [NC_000003](#)

UniProt: [P08473](#)

Pathways: [RTK Signaling, Peptide Hormone Metabolism, Regulation of Systemic Arterial Blood Pressure by Hormones, Smooth Muscle Cell Migration](#)

Application Details

Application Notes: Optimal working dilution should be determined by the investigator.

Restrictions: For Research Use only

Handling

Format: Liquid

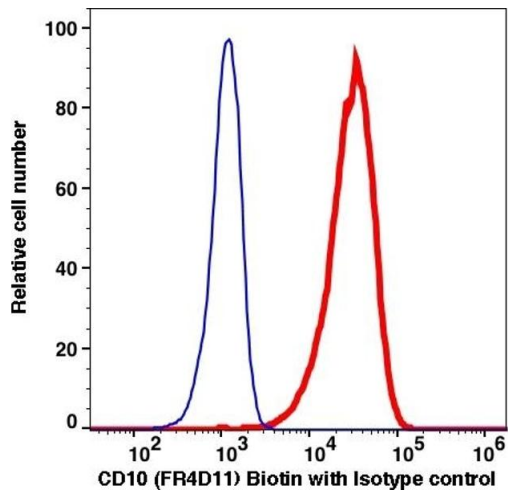
Buffer: PBS pH 7.2, 0.09 % sodium azide

Preservative: Sodium azide

Precaution of Use: This product contains Sodium azide: a POISONOUS AND HAZARDOUS SUBSTANCE which should be handled by trained staff only.

Storage: 4 °C

Storage Comment: 2-8°C, Conjugated antibodies should never be frozen.



Flow Cytometry

Image 1.

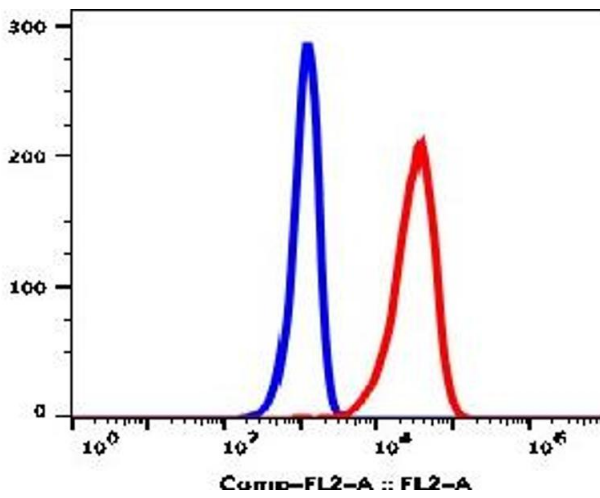


Image 2.