

Datasheet for ABIN5067827  
**anti-CD15 antibody (FITC)**



[Go to Product page](#)

2 Images

## Overview

Quantity:	100 tests
Target:	CD15 (FUT4)
Reactivity:	Human
Host:	Mouse
Clonality:	Monoclonal
Conjugate:	This CD15 antibody is conjugated to FITC
Application:	Flow Cytometry (FACS)

## Product Details

Purpose:	CD15 FITC Antibody
Immunogen:	Purified human neutrophils
Clone:	FUT4-815
Isotype:	IgM, kappa
Characteristics:	The clone FUT4/815 recognizes CD15, a cell surface protein (~220 kDa) abundantly expressed by granulocytes and monocytes. CD15 plays important role in mediating phagocytosis, bactericidal activity, and also chemotaxis. CD15 is also expressed by Reed-Sternberg cells and some other epithelial cells. CD15 is very useful in the identification of Hodgkin s disease and also large cell lymphomas of both B and T phenotypes.
Purification:	Purified
Purity:	>95 %

## Product Details

---

Grade: GMP Grade

## Target Details

---

Target: CD15 (FUT4)

Alternative Name: CD15 (FUT4 Products)

NCBI Accession: [NM\\_002033](#)

UniProt: [P22083](#)

## Application Details

---

Application Notes: Optimal working dilution should be determined by the investigator.

Restrictions: For Research Use only

## Handling

---

Format: Liquid

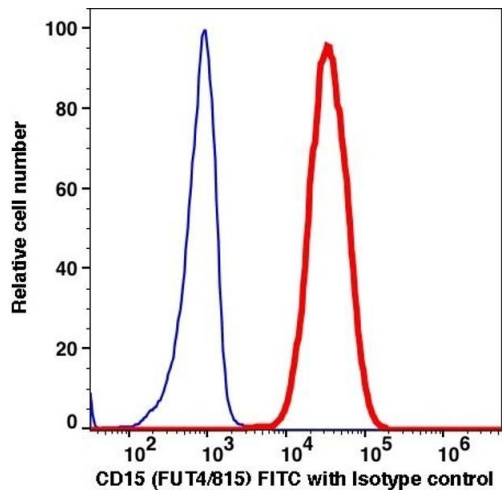
Buffer: PBS pH 7.2, 0.2 % (w/v) BSA, 0.09 % (w/v) sodium azide

Preservative: Sodium azide

Precaution of Use: This product contains Sodium azide: a POISONOUS AND HAZARDOUS SUBSTANCE which should be handled by trained staff only.

Storage: 4 °C

Storage Comment: 2-8°C, Conjugated antibodies should never be frozen.



### Flow Cytometry

Image 1.

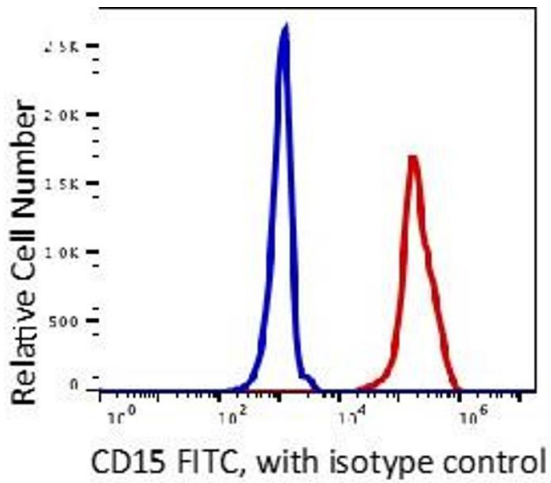


Image 2.