

Datasheet for ABIN5067829 **anti-CD22 antibody**

1 Image



[Go to Product page](#)

Overview

| | |
|--------------|-------------------------------------|
| Quantity: | 100 µg |
| Target: | CD22 |
| Reactivity: | Human |
| Host: | Mouse |
| Clonality: | Monoclonal |
| Conjugate: | This CD22 antibody is un-conjugated |
| Application: | Flow Cytometry (FACS) |

Product Details

| | |
|------------------|---|
| Purpose: | CD22 Unconjugated Antibody |
| Immunogen: | Human Raji Cells |
| Clone: | MYG13 |
| Isotype: | IgG1, kappa |
| Characteristics: | <p>The clone MYG13 recognizes CD22 cell surface antigen, a 130-140 kDa protein. The expression of CD22 is primarily restricted to the normal and neoplastic B cells but does not express on other hematopoietic cells. The initiation of expression of CD22 starts in the cytoplasm of pro-B and pre-B cells. Although CD22 is not expressed by plasma cells, it is abundantly expressed by the follicular mantle and marginal zone B-cells. Being a member of the immunoglobulin superfamily, CD22 serves as an adhesion receptor for sialic acid-bearing ligands expressed on erythrocytes and leukocytes. The role of CD22 in the activation of B-cells is primarily associated with tyrosine kinases mediated signal transduction pathways.</p> |

Product Details

Purification: Purified

Purity: >95 %

Grade: GMP Grade

Target Details

Target: CD22

Alternative Name: CD22 ([CD22 Products](#))

NCBI Accession: [NM_001771](#)

UniProt: [P20273](#)

Application Details

Application Notes: Optimal working dilution should be determined by the investigator.

Restrictions: For Research Use only

Handling

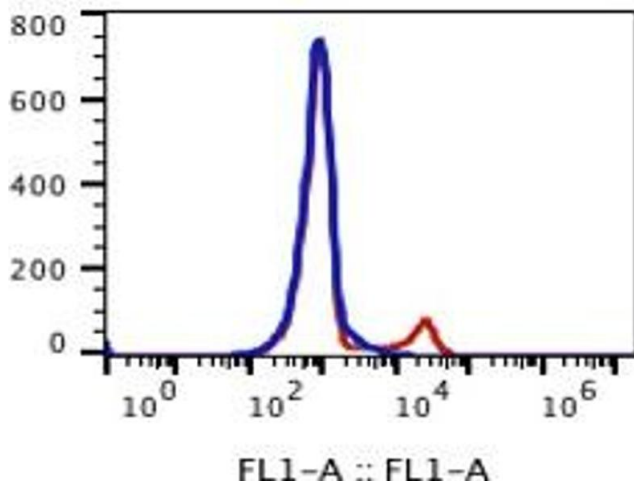
Format: Liquid

Buffer: PBS pH 7.2, 0.1 % (w/v) BSA, 0.09 % (w/v) sodium azide

Preservative: Sodium azide

Precaution of Use: This product contains Sodium azide: a POISONOUS AND HAZARDOUS SUBSTANCE which should be handled by trained staff only.

Storage: 4 °C



Flow Cytometry

Image 1.