

## Datasheet for ABIN5067832 **anti-CD22 antibody (FITC)**



[Go to Product page](#)

### 1 Image

#### Overview

|              |  |
|--------------|--|
| Quantity:    | 100 tests                                |
| Target:      | CD22                                     |
| Reactivity:  | Human                                    |
| Host:        | Mouse                                    |
| Clonality:   | Monoclonal                               |
| Conjugate:   | This CD22 antibody is conjugated to FITC |
| Application: | Flow Cytometry (FACS)                    |

#### Product Details

|                  |   |
|------------------|---|
| Purpose:         | CD22 FITC Antibody  |
| Immunogen:       | Human Raji Cells  |
| Clone:           | MYG13   |
| Isotype:         | IgG1, kappa   |
| Characteristics: | <p>The clone MYG13 recognizes CD22 cell surface antigen, a 130-140 kDa protein. The expression of CD22 is primarily restricted to the normal and neoplastic B cells but does not express on other hematopoietic cells. The initiation of expression of CD22 starts in the cytoplasm of pro-B and pre-B cells. Although CD22 is not expressed by plasma cells, it is abundantly expressed by the follicular mantle and marginal zone B-cells. Being a member of the immunoglobulin superfamily, CD22 serves as an adhesion receptor for sialic acid-bearing ligands expressed on erythrocytes and leukocytes. The role of CD22 in the activation of B-cells is primarily associated with tyrosine kinases mediated signal transduction pathways.</p> |

## Product Details

---

Purification: Purified

Purity: >95 %

Grade: GMP Grade

## Target Details

---

Target: CD22

Alternative Name: CD22 ([CD22 Products](#))

Gene ID: 933

NCBI Accession: [NM\\_001771](#)

UniProt: [P20273](#)

## Application Details

---

Application Notes: Optimal working dilution should be determined by the investigator.

Restrictions: For Research Use only

## Handling

---

Format: Liquid

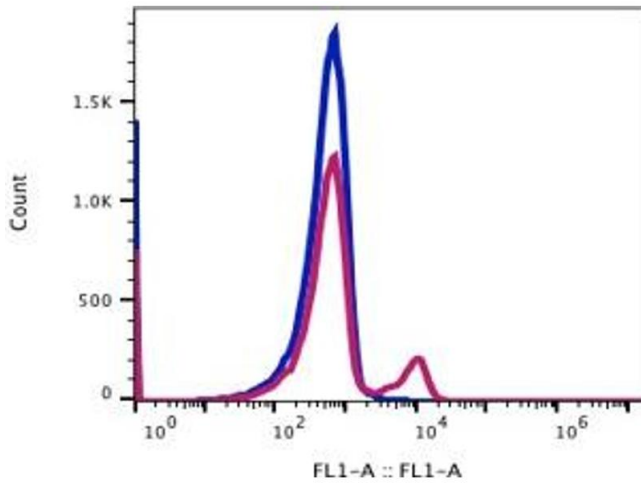
Buffer: PBS pH 7.2, 0.2 % (w/v) BSA, 0.09 % (w/v) sodium azide

Preservative: Sodium azide

Precaution of Use: This product contains Sodium azide: a POISONOUS AND HAZARDOUS SUBSTANCE which should be handled by trained staff only.

Storage: 4 °C

Storage Comment: 2-8°C, Conjugated antibodies should never be frozen.



## Flow Cytometry

Image 1.