

Datasheet for ABIN5067837  
**anti-CD22 antibody (Biotin)**



[Go to Product page](#)

2 Images

## Overview

Quantity:	100 µg
Target:	CD22
Reactivity:	Human
Host:	Mouse
Clonality:	Monoclonal
Conjugate:	This CD22 antibody is conjugated to Biotin
Application:	Flow Cytometry (FACS)

## Product Details

Purpose:	CD22 Biotin Antibody
Immunogen:	Human Raji Cells
Clone:	MYG13
Isotype:	IgG1, kappa
Characteristics:	<p>The clone MYG13 recognizes CD22 cell surface antigen, a 130-140 kDa protein. The expression of CD22 is primarily restricted to the normal and neoplastic B cells but does not express on other hematopoietic cells. The initiation of expression of CD22 starts in the cytoplasm of pro-B and pre-B cells. Although CD22 is not expressed by plasma cells, it is abundantly expressed by the follicular mantle and marginal zone B-cells. Being a member of the immunoglobulin superfamily, CD22 serves as an adhesion receptor for sialic acid-bearing ligands expressed on erythrocytes and leukocytes. The role of CD22 in the activation of B-cells is primarily associated with tyrosine kinases mediated signal transduction pathways.</p>

## Product Details

---

Purification: Purified

Purity: >95 %

Grade: GMP Grade

## Target Details

---

Target: CD22

Alternative Name: CD22 ([CD22 Products](#))

NCBI Accession: [NM\\_001771](#)

UniProt: [P20273](#)

## Application Details

---

Application Notes: Optimal working dilution should be determined by the investigator.

Restrictions: For Research Use only

## Handling

---

Format: Liquid

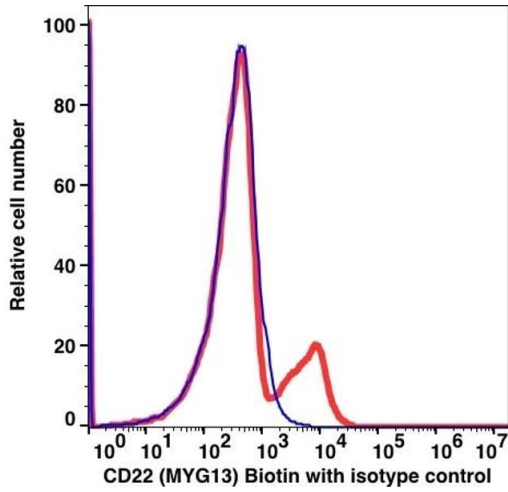
Buffer: PBS pH 7.2, 0.09 % sodium azide

Preservative: Sodium azide

Precaution of Use: This product contains Sodium azide: a POISONOUS AND HAZARDOUS SUBSTANCE which should be handled by trained staff only.

Storage: 4 °C

Storage Comment: 2-8°C, Conjugated antibodies should never be frozen.



Flow Cytometry

Image 1.

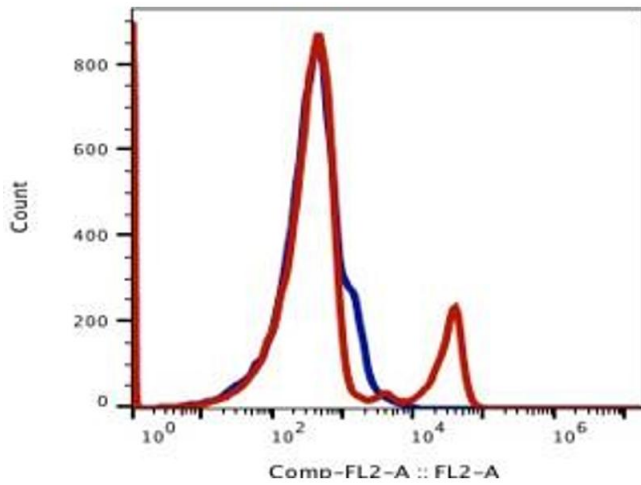


Image 2.