

Datasheet for ABIN5067847
anti-HLA-ABC antibody (FITC)[Go to Product page](#)

1 Image

Overview

Quantity:	100 tests
Target:	HLA-ABC
Reactivity:	Human, Baboon, Cynomolgus, Rhesus Monkey
Host:	Mouse
Clonality:	Monoclonal
Conjugate:	This HLA-ABC antibody is conjugated to FITC
Application:	Flow Cytometry (FACS)

Product Details

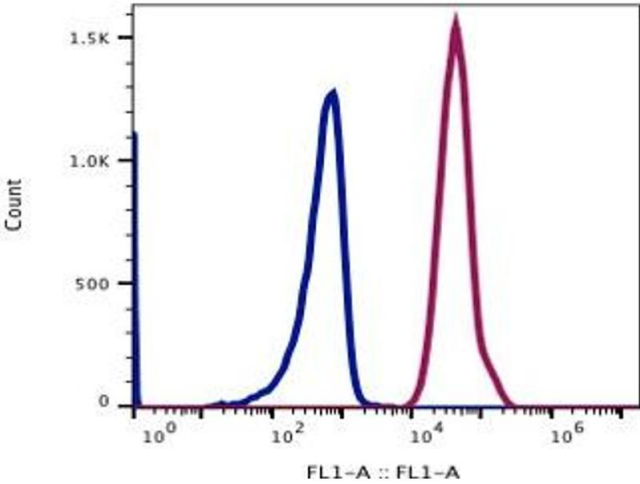
Immunogen:	Human Leukocytes
Clone:	W6-32
Isotype:	IgG2a kappa
Characteristics:	Clone W6/32 recognizes a cell surface 45 kD non-polymorphic epitope protein shared among products of the HLA-A, B, and C loci. HLA class I antigen associated with beta 2-microglobulin are expressed by all human nucleated cells and HLA-Class I down regulation occurs frequently in many cancers which might adversely affect the clinical course of cancer and the outcome of T-cell-based immunotherapy. HLA-Class I present specific foreign antigen to CD8+ T cells which play central role against infection, tumor and also generation of autoimmune diseases.
Purification:	Purified
Purity:	>95 %
Grade:	GMP Grade

Target Details

Target:	HLA-ABC
Alternative Name:	HLA-ABC (HLA-ABC Products)
Background:	Clone W6/32 recognizes a cell surface 45 kD non-polymorphic epitope protein shared among products of the HLA-A, B, and C loci. HLA class I antigen associated with beta 2-microglobulin are expressed by all human nucleated cells and HLA-Class I down regulation occurs frequently in many cancers which might adversely affect the clinical course of cancer and the outcome of T-cell-based immunotherapy. HLA-Class I present specific foreign antigen to CD8+ T cells which play central role against infection, tumor and also generation of autoimmune diseases.
Pathways:	TCR Signaling , Regulation of Leukocyte Mediated Immunity , Positive Regulation of Immune Effector Process , Cancer Immune Checkpoints

Application Details

Restrictions:	For Research Use only
Handling	
Format:	Liquid
Buffer:	PBS pH 7.2, 0.2 % (w/v) BSA, 0.09 % (w/v) sodium azide
Preservative:	Sodium azide
Precaution of Use:	This product contains Sodium azide: a POISONOUS AND HAZARDOUS SUBSTANCE which should be handled by trained staff only.
Storage:	4 °C



Flow Cytometry

Image 1.