

Datasheet for ABIN509570

anti-GRAP2 antibody[Go to Product page](#)

2 Images

2 Publications

Overview

Quantity:	0.1 mg
Target:	GRAP2
Reactivity:	Human
Host:	Mouse
Clonality:	Monoclonal
Conjugate:	This GRAP2 antibody is un-conjugated
Application:	Western Blotting (WB), Immunoprecipitation (IP), Flow Cytometry (FACS)

Product Details

Immunogen:	GST-fusion human GRAP2/GADS protein
Clone:	UW40
Isotype:	IgG2a
Specificity:	The mouse monoclonal antibody UW40 recognizes GRAP2/GADS, a 41 kDa cytoplasmic adaptor protein that plays a pivotal role during the early events of signal transduction in T cells.
Cross-Reactivity (Details):	Human
Purification:	Purified by protein-A affinity chromatography.
Purity:	> 95 % (by SDS-PAGE)

Target Details

Target:	GRAP2
---------	-------

Target Details

Alternative Name:	GRAP2/GADS (GRAP2 Products)
Background:	GRB2 related adaptor protein 2,GRAP2/GADS (Grb2-related adaptor protein 2 / Grb2-related adaptor downstream of Shc) is a cytoplasmic adaptor protein containing N- and C-terminal SH3 domains flanking a central SH2 domain and a proline/glutamine-rich region. It is expressed predominantly in lymphoid tissue and hematopoietic cells, particularly in T cells. GRAP2/GADS plays a pivotal role during the early events of T cell signal transduction by recruiting the adaptor protein SLP-76 and its associated molecules, such as Vav, Nck, Itk, and ADAP, to the transmembrane adaptor protein LAT. GRAP2/GADS also binds several other signaling proteins, namely Gab2, HPK1 (hematopoietic progenitor kinase 1), and Cbl. Unlike similar adaptor protein Grb2, GRAP2/GADS shows higher selectivity when binding to the particular phosphorylated tyrosines of LAT adaptor.,GADS, GRID, GRAP-2, GrbX
Gene ID:	9402
UniProt:	O75791
Pathways:	TCR Signaling , Fc-epsilon Receptor Signaling Pathway

Application Details

Application Notes:	Flow cytometry: Recommended dilution: 2-6 µg/mL. Intracellular staining.
Restrictions:	For Research Use only

Handling

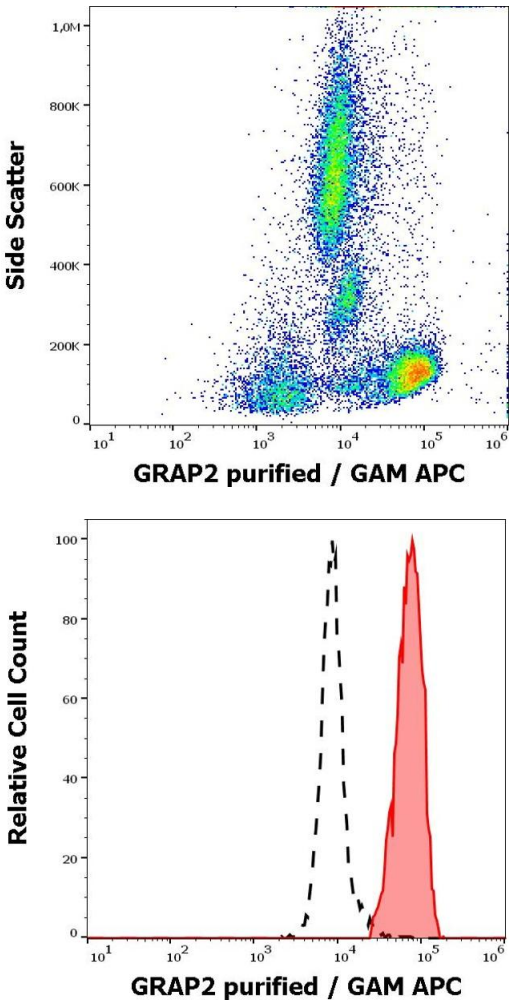
Concentration:	1 mg/mL
Buffer:	Phosphate buffered saline (PBS), pH 7.4, 15 mM sodium azide
Preservative:	Sodium azide
Precaution of Use:	This product contains Sodium azide: a POISONOUS AND HAZARDOUS SUBSTANCE which should be handled by trained staff only.
Handling Advice:	Do not freeze.
Storage:	4 °C
Storage Comment:	Store at 2-8°C. Do not freeze.

Publications

Product cited in:	Yankee, Yun, Draves, Ganesh, Bevan, Murali-Krishna, Clark: "The Gads (GrpL) adaptor protein
-------------------	---

regulates T cell homeostasis." in: **Journal of immunology (Baltimore, Md. : 1950)**, Vol. 173, Issue 3, pp. 1711-20, (2004) ([PubMed](#)).

Yankee, Draves, Ewings, Clark, Graves: "CD95/Fas induces cleavage of the GrpL/Gads adaptor and desensitization of antigen receptor signaling." in: **Proceedings of the National Academy of Sciences of the United States of America**, Vol. 98, Issue 12, pp. 6789-93, (2001) ([PubMed](#)).



Flow Cytometry

Image 1. Flow cytometry intracellular staining pattern of human peripheral whole blood using anti-GRAP2 (UW40) purified antibody (concentration in sample 5 µg/mL, GAM APC).

Flow Cytometry

Image 2. Separation of human GRAP2 positive lymphocytes (red-filled) from neutrophil granulocytes (black-dashed) in flow cytometry analysis (intracellular staining) of peripheral whole blood stained using anti-GRAP2 (UW40) purified antibody (concentration in sample 5 µg/mL, GAM APC).