



Datasheet for ABIN513024
anti-SERPINA3 antibody (AA 1-423)



[Go to Product page](#)

3 Images

Overview

Quantity:	50 µg
Target:	SERPINA3
Binding Specificity:	AA 1-423
Reactivity:	Human
Host:	Mouse
Clonality:	Polyclonal
Conjugate:	This SERPINA3 antibody is un-conjugated
Application:	Western Blotting (WB), Immunofluorescence (IF)

Product Details

Purpose:	Mouse polyclonal antibody raised against a full-length human SERPINA3 protein.
Immunogen:	SERPINA3 (NP_001076.2, 1 a.a. ~ 423 a.a) full-length human protein.
Sequence:	MERMLPLLAL GLLAAGFCPA VLCHPNSPLD EENLTQENQD RGTHVDLGLA SANVDFAFSL YKQLVLKAPD KNVIFSPLSI STALAFSLG AHNTTLTEIL KGLKFNLTTET SEAEIHQSFSQ HLLRTLQSS DELQLSMGNA MFVKEQLSLL DRFTEDAKRL YGSEAFATDF QDSAAAKKLI NDYVKNNGTRG KITDLIKDLD SQTMMVLVNY IFFKAKWEMP FDPQDTHQSR FYLSKKKKWVM VPMMSLHHLT IPYFRDEELS CTVELKYTG NASALFILPD QDKMEEVEAM LLPETLKRWR DSLEFREIGE LYLPKFSISR DYNLNDILLQ LGIEEAFTSK ADLSGITGAR NLAVSQVWHK AVLDVFEEGT EASAATAVKI TLLSALVETR TIVRFNRPFL MIIVPTDTQN IFFMSKVTNP KQA
Cross-Reactivity:	Human
Characteristics:	Antibody reactive against mammalian transfected lysate.

Target Details

Target:	SERPINA3
Alternative Name:	SERPINA3 (SERPINA3 Products)
Background:	Full Gene Name: serpin peptidase inhibitor, clade A (alpha-1 antiproteinase, antitrypsin), member 3 Synonyms: AACT,ACT,GIG24,GIG25,MGC88254
Gene ID:	12
NCBI Accession:	NM_001085

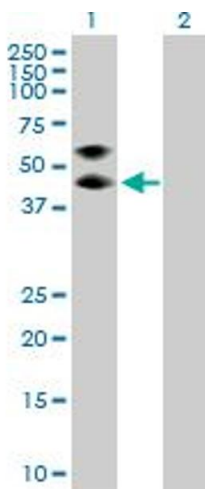
Application Details

Application Notes:	Optimal working dilution should be determined by the investigator.
Restrictions:	For Research Use only

Handling

Buffer:	In 1x PBS, pH 7.4
Handling Advice:	Aliquot to avoid repeated freezing and thawing.
Storage:	-20 °C
Storage Comment:	Store at -20°C or lower. Aliquot to avoid repeated freezing and thawing.

Images

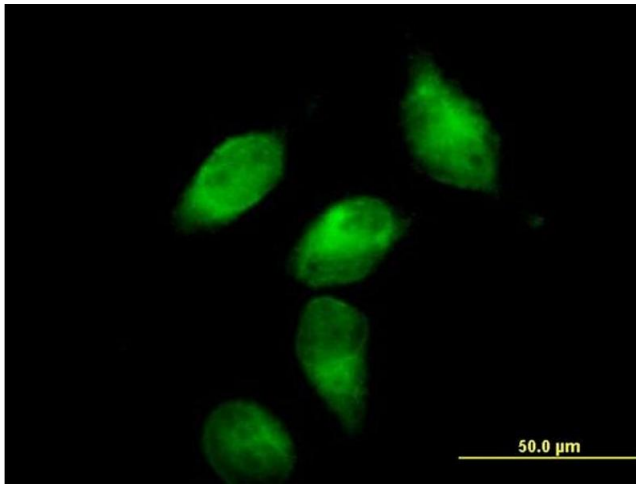


Western Blotting

Image 1. Western Blot analysis of SERPINA3 expression in transfected 293T cell line by SERPINA3 MaxPab polyclonal antibody.

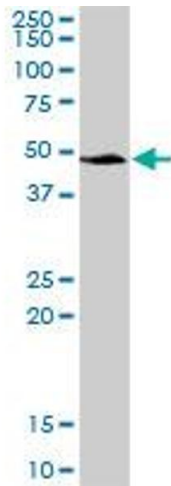
Lane 1: SERPINA3 transfected lysate(46.53 KDa).

Lane 2: Non-transfected lysate.



Immunofluorescence

Image 2. Immunofluorescence of purified MaxPab antibody to SERPINA3 on HeLa cell. [antibody concentration 10 ug/ml]



Western Blotting

Image 3. SERPINA3 MaxPab polyclonal antibody. Western Blot analysis of SERPINA3 expression in HeLa.