

Datasheet for ABIN513091

**anti-Actin, gamma 1 antibody (AA 1-375)****2** Images**1** Publication[Go to Product page](#)

## Overview

Quantity:	100 µg
Target:	Actin, gamma 1 (ACTG1)
Binding Specificity:	AA 1-375
Reactivity:	Human
Host:	Mouse
Clonality:	Monoclonal
Conjugate:	This Actin, gamma 1 antibody is un-conjugated
Application:	ELISA, Proximity Ligation Assay (PLA)

## Product Details

Purpose:	Mouse monoclonal antibody raised against a full length recombinant ACTG1.
Immunogen:	ACTG1 (AAH53572, 1 a.a. ~ 375 a.a) full-length recombinant protein with GST tag. MW of the GST tag alone is 26 KDa.
Sequence:	MEEEIAALVI DNGSGMCKAG FAGDDAPRAV FPSIVGRPRH QGVMVGMGQK DSYVGDEAQS KRGILTLKYP IEHGIVTNWD DMEKIWHHTF YNELRVAPEE HPVLLTEAPL NPKANREKMT QIMFETFNTP AMYVAIQAVL SLYASGRITG IVMDSGDGVT HTVPIYEGYA LPHAILRLDL AGRDLTDYLM KILTERGYSF TTTAEREIVR DIKEKLCYVA LDFAQEMATA ASSSSLEKSY ELPDGQVITI GNERFRCPEA LFQPSFLGME SCGIHETTFN SIMKCDVDIR KDLYANTVLS GGTTMYPGIA DRMQKEITAL APSTMKIKII APPERKYSVW IGGSILASLS TFQQMWISKQ EYDESGPSIV HRKCF
Clone:	1G6

## Product Details

Isotype:	IgG1
Cross-Reactivity:	Human
Characteristics:	Antibody Reactive Against Recombinant Protein.

## Target Details

Target:	Actin, gamma 1 (ACTG1)
Alternative Name:	ACTG1 ( <a href="#">ACTG1 Products</a> )
Background:	Full Gene Name: actin, gamma 1 Synonyms: ACT,ACTG,DFNA20,DFNA26
Gene ID:	71
Pathways:	<a href="#">Myometrial Relaxation and Contraction</a> , <a href="#">Cell-Cell Junction Organization</a>

## Application Details

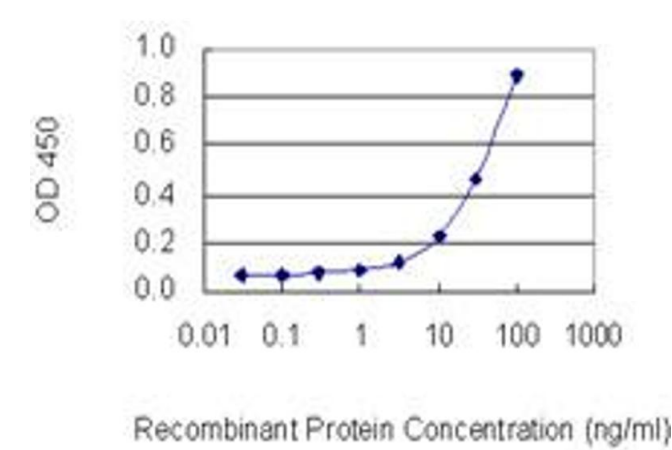
Application Notes:	Optimal working dilution should be determined by the investigator.
Restrictions:	For Research Use only

## Handling

Buffer:	In 1x PBS, pH 7.4
Handling Advice:	Aliquot to avoid repeated freezing and thawing.
Storage:	-20 °C
Storage Comment:	Store at -20°C or lower. Aliquot to avoid repeated freezing and thawing.

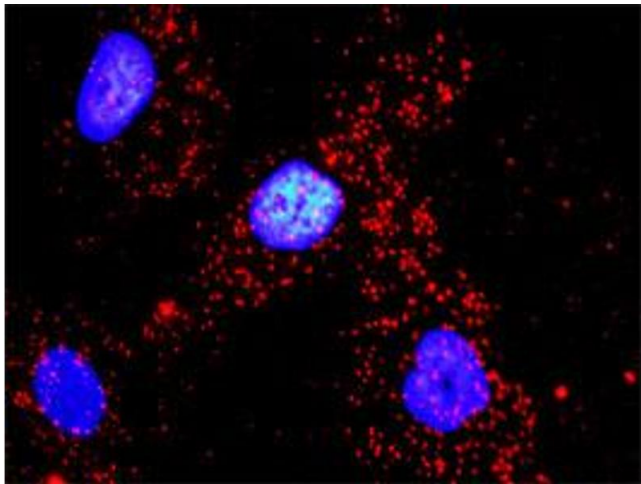
## Publications

Product cited in:	Yang, Kwon, Choi, Park, Yang, Park, Ren, Chung, Kim, Park, Jeong, Lee: "In-depth analysis of cysteine oxidation by the RBC proteome: advantage of peroxiredoxin II knockout mice." in: <b>Proteomics</b> , Vol. 12, Issue 1, pp. 101-12, (2012) ( <a href="#">PubMed</a> ).
-------------------	---



#### ELISA

**Image 1.** Detection limit for recombinant GST tagged ACTG1 is 1 ng/ml as a capture antibody.



#### Proximity Ligation Assay

**Image 2.** Proximity Ligation Analysis of protein-protein interactions between VASP and ACTG1. HeLa cells were stained with anti-VASP rabbit purified polyclonal 1:1200 and anti-ACTG1 mouse monoclonal antibody 1:50. Each red dot represents the detection of protein-protein interaction complex, and nuclei were counterstained with DAPI (blue).