



[Go to Product page](#)

Datasheet for ABIN513127
anti-ADH1C antibody (AA 1-375)

2 Images

Overview

Quantity:	50 µg
Target:	ADH1C
Binding Specificity:	AA 1-375
Reactivity:	Human
Host:	Mouse
Clonality:	Polyclonal
Conjugate:	This ADH1C antibody is un-conjugated
Application:	Western Blotting (WB)

Product Details

Purpose:	Mouse polyclonal antibody raised against a full-length human ADH1C protein.
Immunogen:	ADH1C (NP_000660.1, 1 a.a. ~ 375 a.a) full-length human protein.
Sequence:	MSTAGKVIKC KAAVLWELKK PFSIEEVEVA PPKAHEVRIK MVAAGICRSD EHVVSGNLVT PLPVILGHEA AGIVESVGEG VTTVKPGDKV IPLFTPQCGK CRICKNPESN YCLKNDLGNP RGTLDGTRR FTCSGKPIHH FVGVSTFSQY TVVDENAVAK IDAASPLEKV CLIGCGFSTG YGSAVKVAKV TPGSTCAVFG LGGVGLSVVM GCKAAGAARI IAVDINKDKF AKAKELGATE CINPQDYKKP IQEVLKEMTD GGVDFFSEVI GRLDTMMASL LCCHEACGTS VIVGVPPDSQ NLSINPMLLL TGRTWKGAIF GGFKSKESVP KLVADFMAKK FSLDALITNI LPFEKINEGF DLLRSGKSIR TVLTF
Cross-Reactivity:	Human
Characteristics:	Antibody reactive against mammalian transfected lysate.

Target Details

Target:	ADH1C
Alternative Name:	ADH1C (ADH1C Products)
Background:	Full Gene Name: alcohol dehydrogenase 1C (class I), gamma polypeptide Synonyms: ADH3
Gene ID:	126
NCBI Accession:	NM_000669

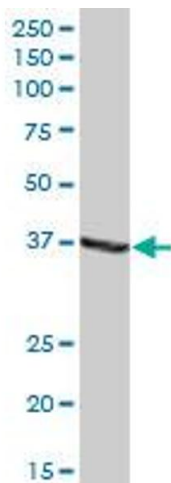
Application Details

Application Notes:	Optimal working dilution should be determined by the investigator.
Restrictions:	For Research Use only

Handling

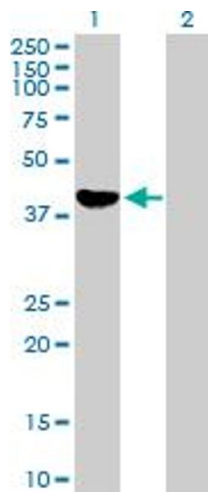
Buffer:	In 1x PBS, pH 7.4
Handling Advice:	Aliquot to avoid repeated freezing and thawing.
Storage:	-20 °C
Storage Comment:	Store at -20°C or lower. Aliquot to avoid repeated freezing and thawing.

Images



Western Blotting

Image 1. ADH1C MaxPab polyclonal antibody. Western Blot analysis of ADH1C expression in human liver.



Western Blotting

Image 2. Western Blot analysis of ADH1C expression in transfected 293T cell line by ADH1C MaxPab polyclonal antibody.

Lane1:ADH1C transfected lysate(41.25 KDa).

Lane2:Non-transfected lysate.