

Datasheet for ABIN513140
anti-ADH6 antibody (AA 55-144)

3 Images

[Go to Product page](#)

Overview

Quantity:	100 µg
Target:	ADH6
Binding Specificity:	AA 55-144
Reactivity:	Human
Host:	Mouse
Clonality:	Monoclonal
Conjugate:	This ADH6 antibody is un-conjugated
Application:	Western Blotting (WB), ELISA

Product Details

Purpose:	Mouse monoclonal antibody raised against a partial recombinant ADH6.
Immunogen:	ADH6 (NP_000663, 55 a.a. ~ 144 a.a) partial recombinant protein with GST tag. MW of the GST tag alone is 26 KDa.
Sequence:	GSKHLDLLYP TILGHEGAGI VESIGEGVST VKPGDKVITL FLPQCGECTS CLNSEGNFCI QFKQSKTQLM SDGTSRFTCK GKSIYHFGNT
Clone:	4G4
Isotype:	IgG2a
Cross-Reactivity:	Human
Characteristics:	Antibody Reactive Against Recombinant Protein.

Target Details

Target:	ADH6
Alternative Name:	ADH6 (ADH6 Products)
Background:	Full Gene Name: alcohol dehydrogenase 6 (class V) Synonyms: ADH-5
Gene ID:	130
NCBI Accession:	NM_000672

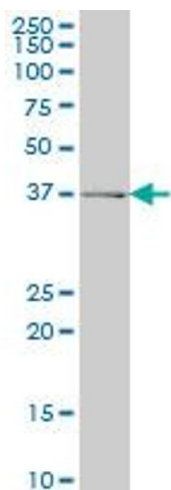
Application Details

Application Notes:	Optimal working dilution should be determined by the investigator.
Restrictions:	For Research Use only

Handling

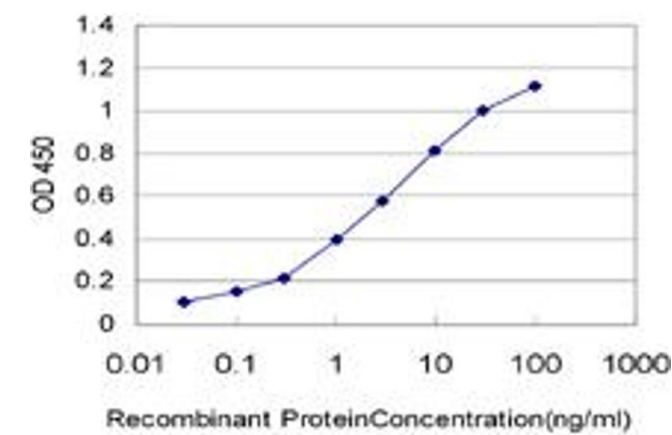
Buffer:	In 1x PBS, pH 7.4
Handling Advice:	Aliquot to avoid repeated freezing and thawing.
Storage:	-20 °C
Storage Comment:	Store at -20°C or lower. Aliquot to avoid repeated freezing and thawing.

Images



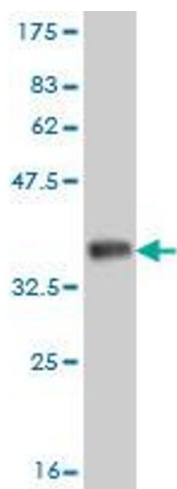
Western Blotting

Image 1. ADH6 monoclonal antibody (M01), clone 4G4
Western Blot analysis of ADH6 expression in K-562 .



ELISA

Image 2. Detection limit for recombinant GST tagged ADH6 is approximately 0.03ng/ml as a capture antibody.



Western Blotting

Image 3. Western Blot detection against Immunogen (35.64 kDa) .