



[Go to Product page](#)

Datasheet for ABIN513152

anti-ADPRH antibody (AA 23-121)

3 Images

Overview

Quantity:	100 µg
Target:	ADPRH
Binding Specificity:	AA 23-121
Reactivity:	Human
Host:	Mouse
Clonality:	Monoclonal
Conjugate:	This ADPRH antibody is un-conjugated
Application:	Western Blotting (WB), ELISA, Immunohistochemistry (Paraffin-embedded Sections) (IHC (p))

Product Details

Purpose:	Mouse monoclonal antibody raised against a partial recombinant ADPRH.
Immunogen:	ADPRH (NP_001116.1, 23 a.a. ~ 121 a.a) partial recombinant protein with GST tag. MW of the GST tag alone is 26 KDa.
Sequence:	KWEFLQDGEK IHRQLAQLGG LDALDVGRWR VSDDTVMHLA TAEALVEAGK APKLTQLYYL LAKHYQDCME DMDGRAPGGA SVHNAMQLKP GKPNGWRIP
Clone:	1F11
Isotype:	IgG2a
Cross-Reactivity:	Human
Characteristics:	Antibody Reactive Against Recombinant Protein.

Target Details

Target:	ADPRH
Alternative Name:	ADPRH (ADPRH Products)
Background:	Full Gene Name: ADP-ribosylarginine hydrolase Synonyms: ARH1
Gene ID:	141
NCBI Accession:	NM_001125

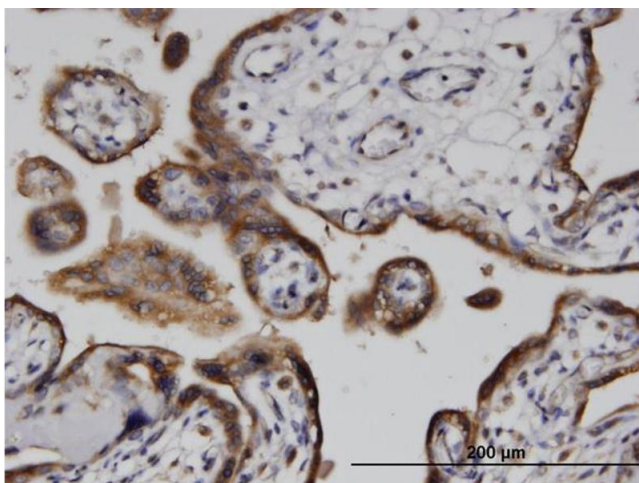
Application Details

Application Notes:	Optimal working dilution should be determined by the investigator.
Restrictions:	For Research Use only

Handling

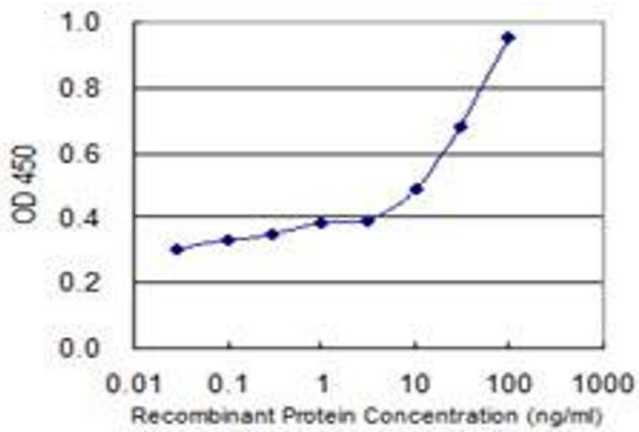
Buffer:	In 1x PBS, pH 7.4
Handling Advice:	Aliquot to avoid repeated freezing and thawing.
Storage:	-20 °C
Storage Comment:	Store at -20°C or lower. Aliquot to avoid repeated freezing and thawing.

Images



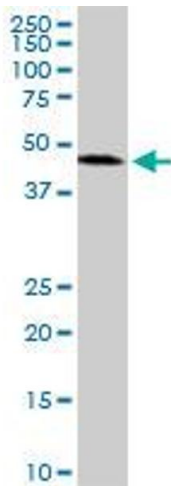
Immunostaining

Image 1. Immunoperoxidase of monoclonal antibody to ADPRH on formalin-fixed paraffin-embedded human placenta. [antibody concentration 3 ug/ml]



ELISA

Image 2. Detection limit for recombinant GST tagged ADPRH is 3 ng/ml as a capture antibody.



Western Blotting

Image 3. ADPRH monoclonal antibody (M04), clone 1F11. Western Blot analysis of ADPRH expression in K-562.