

Datasheet for ABIN513153  
**anti-PARP1 antibody (AA 1-100)**

3 Images



[Go to Product page](#)

## Overview

Quantity:	50 µg
Target:	PARP1
Binding Specificity:	AA 1-100
Reactivity:	Human
Host:	Mouse
Clonality:	Monoclonal
Conjugate:	This PARP1 antibody is un-conjugated
Application:	Western Blotting (WB), ELISA, Immunofluorescence (IF)

## Product Details

Purpose:	Mouse monoclonal antibody raised against a partial recombinant PARP1.
Immunogen:	PARP1 (AAH37545, 1 a.a. ~ 100 a.a) partial recombinant protein with GST tag. MW of the GST tag alone is 26 KDa.
Sequence:	MAESSDKLYR VEYAKSGRAS CKKCSSESIPK DSLRM AIMVQ SPMFDGKVP H WYHFSCFWKV GHSIRHPDVE V DGFSELRWD DQQKV KKTAE AGGVTGKGQD
Clone:	2C7
Isotype:	IgG1
Cross-Reactivity:	Human
Characteristics:	Antibody Reactive Against Recombinant Protein.

## Target Details

Target:	PARP1
Alternative Name:	PARP1 ( <a href="#">PARP1 Products</a> )
Background:	Full Gene Name: poly (ADP-ribose) polymerase 1 Synonyms: ADPRT,ADPRT1,PARP,PARP-1,PPOL,pADPRT-1
Gene ID:	142
Pathways:	<a href="#">Apoptosis</a> , <a href="#">Caspase Cascade in Apoptosis</a> , <a href="#">DNA Damage Repair</a> , <a href="#">Production of Molecular Mediator of Immune Response</a> , <a href="#">Maintenance of Protein Location</a>

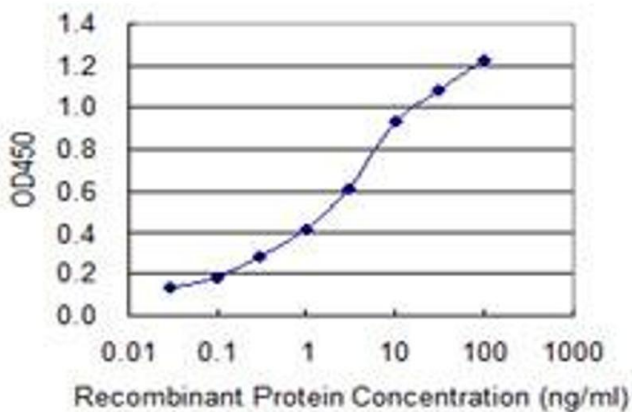
## Application Details

Application Notes:	Optimal working dilution should be determined by the investigator.
Restrictions:	For Research Use only

## Handling

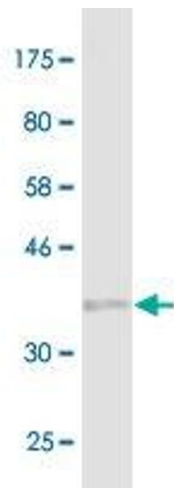
Buffer:	In 1x PBS, pH 7.4
Handling Advice:	Aliquot to avoid repeated freezing and thawing.
Storage:	-20 °C
Storage Comment:	Store at -20°C or lower. Aliquot to avoid repeated freezing and thawing.

## Images



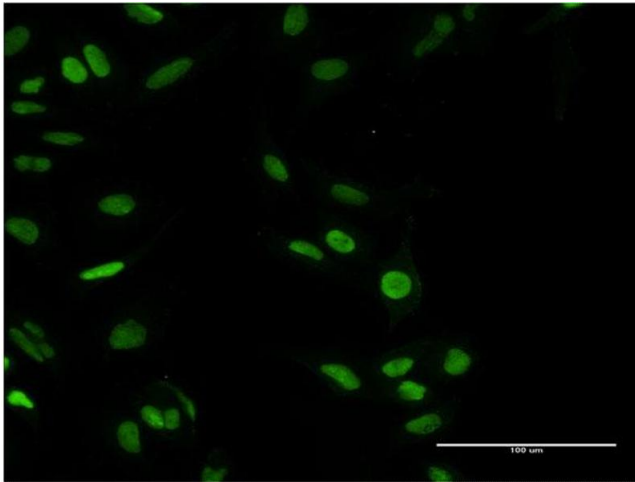
### ELISA

**Image 1.** Detection limit for recombinant GST tagged PARP1 is 0.03 ng/ml as a capture antibody.



### Western Blotting

**Image 2.** Western Blot detection against Immunogen (36.63 KDa) .



### Immunofluorescence

**Image 3.** Immunofluorescence of monoclonal antibody to PARP1 on HeLa cell. [antibody concentration 10 ug/ml]