



[Go to Product page](#)

Datasheet for ABIN513249  
**anti-ALDH3B1 antibody (AA 1-468)**

2 Images

Overview

Quantity:	100 µg
Target:	ALDH3B1
Binding Specificity:	AA 1-468
Reactivity:	Human
Host:	Mouse
Clonality:	Monoclonal
Conjugate:	This ALDH3B1 antibody is un-conjugated
Application:	ELISA, Immunoprecipitation (IP)

Product Details

Purpose:	Mouse monoclonal antibody raised against a full-length recombinant ALDH3B1.
Immunogen:	ALDH3B1 (AAH13584, 1 a.a. ~ 468 a.a) full-length recombinant protein with GST tag. MW of the GST tag alone is 26 KDa.
Sequence:	MDPLGDTLRR LREAFHAGRT RPAEFRAAQL QGLGRFLQEN KQLLHDALAQ DLHKSAFESE VSEVAISQGE VTLALRNLRA WMKDERVPKN LATQLDSAFI RKEPFGLVLI IAPWNYPLNL TLVPLVGALA AGNCVVLKPS EISKNVKIL AEVLPQYVDQ SCFAVVLGGP QETGQLEHR FDYIFFTGSP RVGKIVMTAA AKHLTPVTLE LGGKNPCYVD DNCDPQTVAN RVAWFRYFNA GQTCVAPDYV LCSPQMQLERL LPALQSTITR FYGDDPQSSP NLGRIINQKQ FQRLRALLGC GRVAIGGQSD ESDRYIAPTV LVDVQEMEPV MQEEIFGPIL PIVNVQSLDE AIEFINRREK PLALYAFSNS SQVVKRVLQ TSSGGFCGND GFMHMTLASL PFGGVGASGM GRYHGKFSFD TFSHHRACLL RSPGMEKLN LRYPPQSPRR LRMLLVAMEA QGCSTLL

## Product Details

---

Clone:	1F2
Isotype:	IgG2b
Cross-Reactivity:	Human
Characteristics:	Antibody Reactive Against Recombinant Protein.

## Target Details

---

Target:	ALDH3B1
Alternative Name:	ALDH3B1 ( <a href="#">ALDH3B1 Products</a> )
Background:	Full Gene Name: aldehyde dehydrogenase 3 family, member B1 Synonyms: ALDH4,ALDH7,FLJ26433
Gene ID:	221
Pathways:	<a href="#">Monocarboxylic Acid Catabolic Process</a>

## Application Details

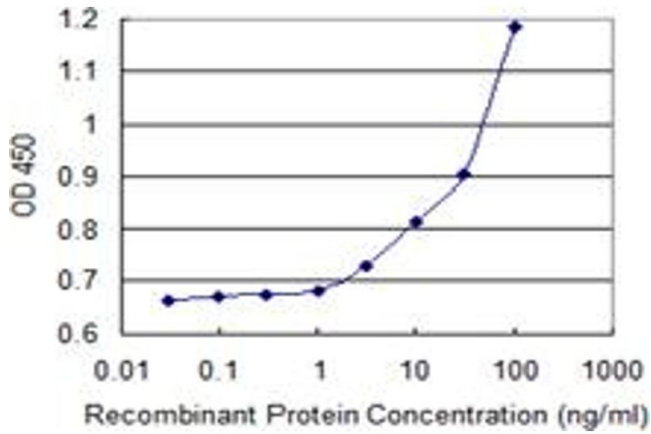
---

Application Notes:	Optimal working dilution should be determined by the investigator.
Restrictions:	For Research Use only

## Handling

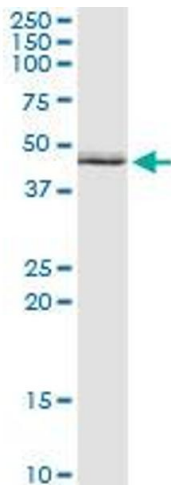
---

Buffer:	In 1x PBS, pH 7.4
Handling Advice:	Aliquot to avoid repeated freezing and thawing.
Storage:	-20 °C
Storage Comment:	Store at -20°C or lower. Aliquot to avoid repeated freezing and thawing.



### ELISA

**Image 1.** Detection limit for recombinant GST tagged ALDH3B1 is 1 ng/ml as a capture antibody.



### Immunoprecipitation

**Image 2.** Immunoprecipitation of ALDH3B1 transfected lysate using anti-ALDH3B1 monoclonal antibody and Protein A Magnetic Bead , and immunoblotted with ALDH3B1 MaxPab rabbit polyclonal antibody.