

Datasheet for ABIN513250  
**anti-ALDH3B2 antibody (AA 1-385)**



[Go to Product page](#)

1 Image

Overview

Quantity:	100 µg
Target:	ALDH3B2
Binding Specificity:	AA 1-385
Reactivity:	Human
Host:	Rabbit
Clonality:	Polyclonal
Conjugate:	This ALDH3B2 antibody is un-conjugated
Application:	Western Blotting (WB)

Product Details

Purpose:	Rabbit polyclonal antibody raised against a full-length human ALDH3B2 protein.
Immunogen:	ALDH3B2 (AAH07685.1, 1 a.a. ~ 385 a.a) full-length human protein.
Sequence:	MKDEPRSTNL FMKLDVFIW KEPFGLVLII APWNYPLNLT LVLLVGALAA GSCVVLKPSE ISQGTEKVLV EVLPPQYLDQS CFAVVLGGPQ ETGQLLEHKL DYIFFTGSPR VGKIVMTAAT KHLTPVTLEL GGKNPCYVDD NCDPQTVANR VAWFCYFNAG QTCVAPDYVL CSPEMQERLL PALQSTITRF YGDDPQSSPN LGRIINQKQF QRLRALLGCG RVAIGGQSNE SDRYIAPTVL VDQVETEPVM QEEIFGPILP IVNVQSVDEA IKFINWQEKP LALYAFSNESS QVVNQMLERT SSGSFGGNEG FTYISLLSVP FGGVGHSGMG RYHGKFTFDT FSHHRTCLLA PSGLEKLKEI HYPPYTDWNQ QLLRWGMGSQ SCTL
Cross-Reactivity:	Human
Characteristics:	Antibody reactive against mammalian transfected lysate.

## Target Details

Target:	ALDH3B2
Alternative Name:	ALDH3B2 ( <a href="#">ALDH3B2 Products</a> )
Background:	Full Gene Name: aldehyde dehydrogenase 3 family, member B2 Synonyms: ALDH8
Gene ID:	222

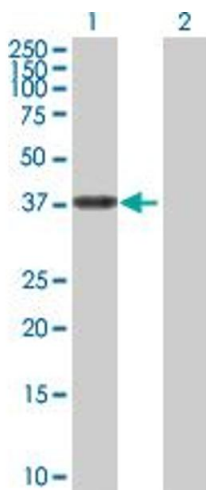
## Application Details

Application Notes:	Optimal working dilution should be determined by the investigator.
Restrictions:	For Research Use only

## Handling

Buffer:	In 1x PBS, pH 7.4
Handling Advice:	Aliquot to avoid repeated freezing and thawing.
Storage:	-20 °C
Storage Comment:	Store at -20°C or lower. Aliquot to avoid repeated freezing and thawing.

## Images



### Western Blotting

**Image 1.** Western Blot analysis of ALDH3B2 expression in transfected 293T cell line by ALDH3B2 MaxPab polyclonal antibody.

Lane 1: ALDH3B2 transfected lysate(42.70 KDa).

Lane 2: Non-transfected lysate.