

Datasheet for ABIN513324
anti-BIN1 antibody (AA 1-482)



[Go to Product page](#)

2 Images

Overview

Quantity:	100 µg
Target:	BIN1
Binding Specificity:	AA 1-482
Reactivity:	Human
Host:	Rabbit
Clonality:	Polyclonal
Conjugate:	This BIN1 antibody is un-conjugated
Application:	Western Blotting (WB), Immunofluorescence (IF)

Product Details

Purpose:	Rabbit polyclonal antibody raised against a full-length human BIN1 protein.
Immunogen:	BIN1 (NP_647598.1, 1 a.a. ~ 482 a.a) full-length human protein.
Sequence:	<p>MAEMGSKGVT AGKIASNVQK KLTRAQEKVL QKLGKADETK DEQFEQCVQN FNKQLTEGTR LQKDLRTYLA SVKAMHEASK KLNECLQEVY EPDWPGRDEA NKIAENNDLL WMDYHQKLVD QALLTMDTYL GQFPDIKSRI AKRGRKLVY DSARHHYESL QTAKKKDEAK IAKAEELIK AQKVFEEMNV DLQEELPSLW NSRVGFYVNT FQSIAGLEEN FHKEMSKLNQ NLNDVLVGLLE KQHGSNTFTV KAQPSDNAPA KGNKSPSPPD GSPAATPEIR VNHEPEPAGG ATPGATLPKS PSQLRKGPPV PPPPKHTPSK EVKQEQLSL FEDTFVPEIS VTTPSQPAEA SEVAGGTQPA AGAQEPGETA ASEAASSSLP AVVVFETFPAT VNGTVEGGSG AGRLDLPPGF MFKVQAQHDY TATDDELQL KAGDVVLVIP FQNPEEQDEG WLMGVKESDW NQHKELEKCR GVFPENFTEP VP</p>
Cross-Reactivity:	Human

Product Details

Characteristics: Antibody reactive against mammalian transfected lysate.

Target Details

Target: BIN1

Alternative Name: BIN1 ([BIN1 Products](#))

Background: Full Gene Name: bridging integrator 1
Synonyms: AMPH2,AMPHL,DKFZp547F068,MGC10367,SH3P9

Gene ID: 274

NCBI Accession: [NM_139348](#)

Application Details

Application Notes: Optimal working dilution should be determined by the investigator.

Restrictions: For Research Use only

Handling

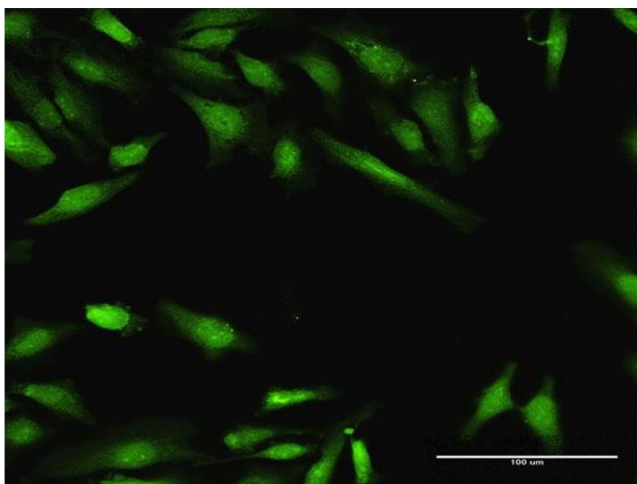
Buffer: In 1x PBS, pH 7.4

Handling Advice: Aliquot to avoid repeated freezing and thawing.

Storage: -20 °C

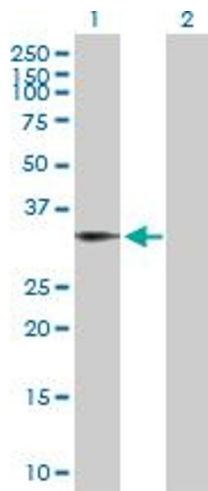
Storage Comment: Store at -20°C or lower. Aliquot to avoid repeated freezing and thawing.

Images



Immunofluorescence

Image 1. Immunofluorescence of purified MaxPab antibody to BIN1 on HeLa cell. [antibody concentration 30 ug/ml]



Western Blotting

Image 2. Western Blot analysis of BIN1 expression in transfected 293T cell line by BIN1 MaxPab polyclonal antibody.

Lane 1: BIN1 transfected lysate(53.00 KDa).

Lane 2: Non-transfected lysate.