

Datasheet for ABIN513339  
**anti-ANG antibody (AA 25-147)**[Go to Product page](#)

## 3 Images

## Overview

Quantity:	100 µg
Target:	ANG
Binding Specificity:	AA 25-147
Reactivity:	Human
Host:	Mouse
Clonality:	Monoclonal
Conjugate:	This ANG antibody is un-conjugated
Application:	Western Blotting (WB), ELISA

## Product Details

Purpose:	Mouse monoclonal antibody raised against a full length recombinant ANG.
Immunogen:	ANG (AAH54880, 25 a.a. ~ 147 a.a) full-length recombinant protein with GST tag. MW of the GST tag alone is 26 KDa.
Sequence:	QDNSRYTHFL TQHYDAKPQG RDDRYCESIM RRRGLTSPCK DINTFIHGK RSIKAIKENK NGNPHRENLR ISKSSFQVTT CKLHGGSPWP PCQYRATAGF RNVVACENG LPVHLDQSIF RRP
Clone:	2A7
Isotype:	IgG1
Cross-Reactivity:	Human
Characteristics:	Antibody Reactive Against Recombinant Protein.

### Target Details

Target:	ANG
Alternative Name:	ANG ( <a href="#">ANG Products</a> )
Background:	Full Gene Name: angiogenin, ribonuclease, RNase A family, 5 Synonyms: ALS9,HEL168,MGC22466,MGC71966,RNASE4,RNASE5
Gene ID:	283

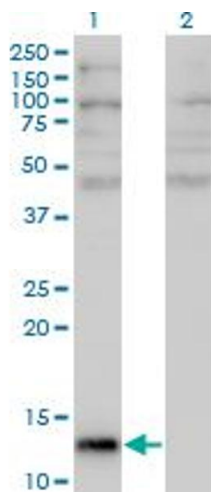
### Application Details

Application Notes:	Optimal working dilution should be determined by the investigator.
Restrictions:	For Research Use only

### Handling

Buffer:	In 1x PBS, pH 7.4
Handling Advice:	Aliquot to avoid repeated freezing and thawing.
Storage:	-20 °C
Storage Comment:	Store at -20°C or lower. Aliquot to avoid repeated freezing and thawing.

### Images

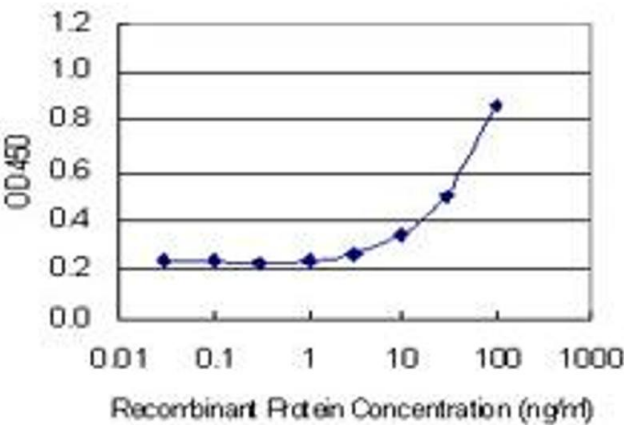


#### Western Blotting

**Image 1.** Western Blot analysis of ANG expression in transfected 293T cell line by ANG monoclonal antibody (M05), clone 2A7.

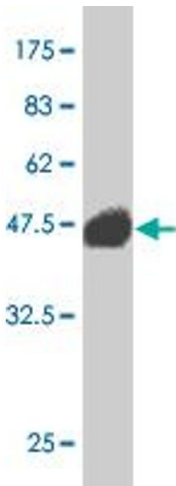
Lane 1: ANG transfected lysate(16.6 KDa).

Lane 2: Non-transfected lysate.



ELISA

**Image 2.** Detection limit for recombinant GST tagged ANG is 1 ng/ml as a capture antibody.



Western Blotting

**Image 3.** Western Blot detection against Immunogen (39.27 kDa) .