

Datasheet for ABIN513349
anti-SLC25A6 antibody (AA 135-209)[Go to Product page](#)

1 Image

Overview

Quantity:	100 µg
Target:	SLC25A6
Binding Specificity:	AA 135-209
Reactivity:	Human
Host:	Mouse
Clonality:	Monoclonal
Conjugate:	This SLC25A6 antibody is un-conjugated
Application:	Western Blotting (WB), ELISA

Product Details

Purpose:	Mouse monoclonal antibody raised against a partial recombinant SLC25A6.
Immunogen:	SLC25A6 (NP_001627, 135 a.a. ~ 209 a.a) partial recombinant protein with GST tag. MW of the GST tag alone is 26 KDa.
Sequence:	DFARTRLAAD VGKSGTEREF RGLGDCLVKI TKSDGIRGLY QGFSVSVQGI IYRAAYFGV YDTAKGMLPD PKNTH
Clone:	4B9
Isotype:	IgG3
Cross-Reactivity:	Human
Characteristics:	Antibody Reactive Against Recombinant Protein.

Target Details

Target:	SLC25A6
Alternative Name:	SLC25A6 (SLC25A6 Products)
Background:	Full Gene Name: solute carrier family 25 (mitochondrial carrier, adenine nucleotide translocator), member 6 Synonyms: AAC3,ANT3,ANT3Y,MGC17525
Gene ID:	293
NCBI Accession:	NM_001636

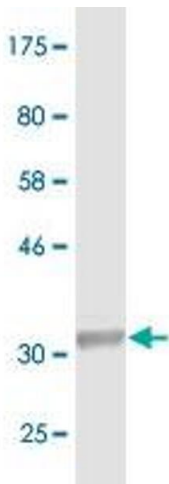
Application Details

Application Notes:	Optimal working dilution should be determined by the investigator.
Restrictions:	For Research Use only

Handling

Buffer:	In 1x PBS, pH 7.4
Handling Advice:	Aliquot to avoid repeated freezing and thawing.
Storage:	-20 °C
Storage Comment:	Store at -20°C or lower. Aliquot to avoid repeated freezing and thawing.

Images



Western Blotting

Image 1. Western Blot detection against Immunogen (33.99 KDa) .