

Datasheet for ABIN513376
anti-APAF1 antibody (AA 1-1205)



[Go to Product page](#)

2 Images

Overview

Quantity:	100 µg
Target:	APAF1
Binding Specificity:	AA 1-1205
Reactivity:	Human
Host:	Rabbit
Clonality:	Polyclonal
Conjugate:	This APAF1 antibody is un-conjugated
Application:	Western Blotting (WB)

Product Details

Purpose:	Rabbit polyclonal antibody raised against a full-length human APAF1 protein.
Immunogen:	APAF1 (NP_863658.1, 1 a.a. ~ 1205 a.a) full-length human protein.
Sequence:	MDAKARNCLL QHREALEKDI KTSYIMDHMI SDGFLTISEE EKVRNEPTQQ QRAAMLKMI LKKDNDYSYVS FYNALLHEGY KDLAALLHDG IPVVSSSSGK DSVSGITSYV RTVLCEGGVP QRPVVFVTRK KLVNAIQKL SKLKGEPGWV TIHGMAGCGK SVLAAEAVRD HSLLEGCFPG GVHWVSVGKQ DKSGLLMKLQ NLCTRLDQDE SFSQRLPLNI EEAKDRLRIL MLRKHPRSL ILDDVWDSWV LKAFFDSQCQI LLTTRDKSVT DSVMGPKYV PVESLGGKEK GLEILSLFVN MKKADLPEQA HSIKECKGS PLVSLIGAL LRDFPNRWEY YLQQLQNKQF KRIRKSSSYD YEALDEAMSI SVEMLREDIK DYYTDLNILQ KDVKVPTKVL CILWDMETEE VEDILQEFVN KSLLCFDRNG KSFYRYLHDL QVDFLTEKNC SQLQDLHKKI ITQFQRYHQP HTLSPDQEDC MYWYNFLAYH MASAKMHKEL CALMFSLDWI KAKTELVGPA HLIHEFVEYR HILDEKDCAV SENFQEFSL NGHLLGRQPF PNIVQLGLCE PETSEVYQQA KLQAKQEVND GMLYLEWINK

Product Details

KNITNLSRLV VRPHTDAVYH ACFSEDGQRI ASCGADKTLQ VFKAETGEKL LEIKAHEDEV
LCCAFSTDDR FIATCSVDKK VKIWSMTGE LVHTYDEHSE QVNCCHFTNS SHHLLLATGS
SDCFLKLWDL NQKECRNTMF GHTNSVNHCR FSPDDKLLAS CSADGTLKLW DATSANERKS
INVKQFFLNL EDPQEDMEVI VKCCSWSADG ARIMVAAKNK IFLWNTDSRS KVADCRGHLS
WVHGVMFSPD GSSFLTSSDD QTIRLWETKK VCKNSAVMLK QEVDVVFQEN EVMVLAVDHI
RRLQLINGRT GQIDYLTEAQ VSCCCLSPHL QYIAFGDENG AIEILELVNN RIFQSRFQHK
KTVWHIQFTA DEKTLISSSD DAEIQVWNWQ LDKCIFLRGH QETVKDFRLL KNSRLLSWSF
DGTVKVWNII TGNKEKDFVC HQGTVLSCDI SHDATKFSST SADKTAKIWS FDLLLPLHEL
RGHNGCVRCS AFSVDSTLLA TGDDNGEIRI WNVSNGELLH LCAPLSEEGA ATHGGWVTDL
CFSPDGKMLI SAGGYIKWWN VVTGESSQTF YTNGTNLKKI HVSPDFKTYV TVDNLGILYI LQTL

Cross-Reactivity: Human

Characteristics: Antibody reactive against mammalian transfected lysate.

Target Details

Target: APAF1

Alternative Name: APAF1 ([APAF1 Products](#))

Background: Full Gene Name: apoptotic peptidase activating factor 1
Synonyms: CED4,DKFZp781B1145

Gene ID: 317

NCBI Accession: [NM_181868](#)

Pathways: [p53 Signaling](#), [Apoptosis](#), [Caspase Cascade in Apoptosis](#), [Tube Formation](#), [Positive Regulation of Endopeptidase Activity](#)

Application Details

Application Notes: Optimal working dilution should be determined by the investigator.

Restrictions: For Research Use only

Handling

Buffer: In 1x PBS, pH 7.4

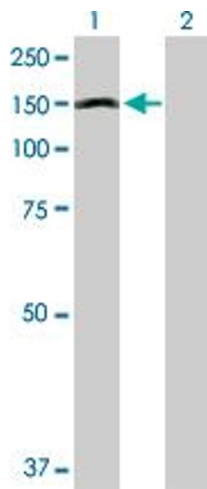
Handling Advice: Aliquot to avoid repeated freezing and thawing.

Storage: -20 °C

Handling

Storage Comment: Store at -20°C or lower. Aliquot to avoid repeated freezing and thawing.

Images

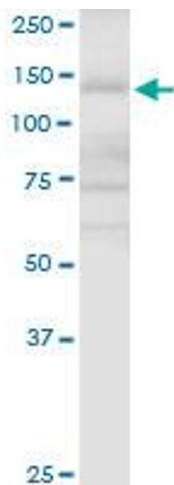


Western Blotting

Image 1. Western Blot analysis of APAF1 expression in transfected 293T cell line by APAF1 MaxPab polyclonal antibody.

Lane 1: APAF1 transfected lysate(137.10 kDa).

Lane 2: Non-transfected lysate.



Western Blotting

Image 2. APAF1 MaxPab rabbit polyclonal antibody. Western Blot analysis of APAF1 expression in K-562.