



Datasheet for ABIN513388
anti-APC antibody (AA 1-2843)



[Go to Product page](#)

2 Images

Overview

Quantity:	100 µg
Target:	APC
Binding Specificity:	AA 1-2843
Reactivity:	Human
Host:	Rabbit
Clonality:	Polyclonal
Conjugate:	This APC antibody is un-conjugated
Application:	Western Blotting (WB), Proximity Ligation Assay (PLA)

Product Details

Purpose:	Rabbit polyclonal antibody raised against a full-length human APC protein.
Immunogen:	APC (AAI11592.1, 1 a.a. ~ 2843 a.a) full-length human protein.
Sequence:	MAAASYDQLL KQVEALKMEN SNLRQELEDN SNHLTKLETE ASNMKEVLKQ LQGSIEDEAM ASSGQIDLLE RLKELNLDSS NFPGVKLRK MSLRSYGSRE GSVSSRSSEC SPVPMGSFPR RGFVNGSRES TGYLEELEKE RLLLLADLDK EEKEKWYQA QLQNLTKRID SLPLTENFSL QDTMTRRQLE YEARQIRVAM EEQLGTCQDM EKRAQRRIAR IQQIEKDILR IRQLLSQAT EAERSSQNKH ETGSHDAERQ NEGQGVGEIN MATSGNGQGS TTRMDHETAS VLSSSSTHSA PRRLTSHLGT KVEMVYLLS MLGTHDKDDM SRTLLAMSSS QDSCISMRQS GCLPLLIQLL HGNDKDSVLL GNSRGSKEAR ARASAALHNI IHSQPDDKRG RREIRVLHLL EQIRAYCETC WEWQEAHEPG MDQDKNPMPA PVEHQICPAV CVLMKLSFDE EHRHAMNELG GLQAIPELLQ VDCEMYGLTN DHYSITLRRY AGMALTNLTF GDVANKATLC SMKGCMPALV AQLKSEEDL QQVIASVLRN LSWRADVNSK KTLREVGSKV ALMECALEVK KESTLKSVALS ALWNLSAHT

ENKADICAVD GALAFLVGTLY TYRSQTNTLA IIESGGGILR NVSSLIATNE DHRQILRENN
CLQTLQLHLK SHSLTIVSNA CGTLWNLSAR NPKDQEALWD MGAVSMLKNL IHSKHKMIAM
GSAAALRNLM ANRPAKYKDA NIMSPGSSLP SLHVRKQKAL EAELDAQHLS ETFDNIDNLS
PKASHRSKQR HKQSLYGDYV FDTNRHDDNR SDNFNTGNMT VLSPYLNTTV LPSSSSSRGS
LDSSRSEKDR SLERERIGL GNYHPATENP GTSSKRGLQI STTAAQIAKV MEEVSAIHTS
QEDRSSGTT ELHCVTDERN ALRRSSAAHT HSNTYNFTKS ENSNRTCSMP YAKLEYKRSS
NDSLNSVSSS DGYGKRGQMK PSIESYSEDD ESKFCSYGQY PADLAHKIHS ANHMDDNDGE
LDTPINYSLK YSDEQLNSGR QSPSQNERWA RPKHIEDEI KQSEQRQSRN QSTTYPVYTE
STDDKHLKFQ PHFGQQECVS PYRSRGANGS ETNRVGSNHG INQNVSQLC QEDDYEDDKP
TNYSEYSEE EQHEEEERPT NYSIKYNEEK RHVDQPIDYS LKYATDIPSS QKQSFSSKSKS
SSGQSSKTEH MSSSENTST PSSNAKRQNG LHPSSAQSRG GQPQKAATCK VSSINQETIQ
TYCVEDTPIC FSRCSLSSL SSAEIEGICN QTTQEADSAN TLQIAEIKEK IGTRSAEDPV
SEVPAVSQHP RTKSSRLQGS SLSESARHK AVEFSSGAKS PSKSGAQTTPK SPPEHYVQET
PLMFSRCTSV SSLDSFESRS IASSVQSEPC SGMVSGIISP SDLPDSPGQT MPPSRKSTPP
PPPQTAQTKR EVPKNKAPTA EKRESGPKQA AVNAAVQRVQ VLPDADTLLH FATESTPDGF
SCSSLSALS LDEPFIQKDV ELRIMPPVQE NDNGNETESE QPKESNENQE KEAEKTIDSE
KDLLDDSDDD DIEILEECII SAMPTKSSRK AKKPAQTASK LPPPVARKPS QLPVYKLLPS
QNRLQPQKHV SFTPGDDMPR VYCVGTPIN FSTATSLSDL TIESPPNELA AGEVGRGGAQ
SGEFEKRTDI PTEGRSTDEA QGGKTSSVTI PELDDNKAEE GDILAECINS AMPKGGKSHKP
FRVKKIMDQV QQASASSAP NKNQLDGKKK KPTSPVKPIP QNTEYRTRVR KNADSKNNLN
AERVFSDNKD SKKQNLKNNS KVFNDKLPNN EDRVRSFAF DSPHHYTPIE GTPYCFSRND
SLSSLDLDFDD DVLSREKAE LRKAKENKES EAKVTSHTL TSNQQSANKT QAIKQPINR
GQPKPILQKQ STFPQSSKDI PDRGAATDEK LQNFIAENTP VCFSHNSSLS SLSDIDQENN
NKENEPIKET EPPDSQGEPS KPQASGYAPK SFHVEDTPVC FSRNSSLSSL SIDSEDDLQ
ECISSAMPKK KKPSRLKGDN EKHSRNMGG ILGEDLTLDL KDIQRPDSEH GLSPDSENF
WKAIQEGANS IVSSLHQA AAACLSRQASS DSDSILSLKS GISLGSPFHL TPDQEEKPFT
SNKGPRILKP GEKSTLETKK IESESKGIGK GKKVYKSLIT GKVRSNSEIS GQMKQPLQAN
MPSISRGRM IHIPGVRNSS SSTSPVSKKG PPLKTPASKS PSEGQTATTS PRGAKPSVKS
ELSPVARQTS QIGGSSKAPS RSGSRDSTPS RPAQQPLSRP IQSPGRNSIS PGRNGISPPN
KLSQLPRTSS PSTASTKSSG SGKMSYTPG RQMSQQNLTK QTGLSKNASS IPRSESASKG
LNQMNNNGA NKKVELSRMS STKSSGSESD RSERPVLVRQ STFIKEAPSP TLRRKLEESA
SFESLSPSSR PASPTRSQAQ TPVLSPLPD MSLSTHSSVQ AGGWRKLPPN LSPTIEYNDG
RPAKRHDIAH SHSESPSRLP INRSWTWRE HSKHSSSLPR VSTWRRTGSS SSILSASSES
SEKAKSEDEK HVNSISGKQ SKENQVSAK TWRKIKENEF SPTNSTSQT VSSGATNGAES
KTLIYQMAPA VSKTEDVWVR IEDCPINNPR SGRSPTGNTP PVIDSVSEKA NPNIKDSKDN
QAKQNVGNGS VPMRTVPLEN RLNSFIQVDA PDQKGTEIKP GQNNPVPVSE TNESSIVERT

Product Details

PFSSSSSSKH SSPSGTVAAR VTPFNYNPSP RKSSADSTSA RPSQIPTPVN NNTKKRDSKT
DSTESSGTQS PKRHSGSYLV TSV

Cross-Reactivity: Human

Characteristics: Antibody reactive against mammalian transfected lysate.

Target Details

Target: APC

Alternative Name: APC ([APC Products](#))

Background: Full Gene Name: adenomatous polyposis coli

Synonyms: BTPS2,DP2,DP2.5,DP3,GS

Gene ID: 324

Pathways: [WNT Signaling](#), [Stem Cell Maintenance](#), [Cell-Cell Junction Organization](#)

Application Details

Application Notes: Optimal working dilution should be determined by the investigator.

Restrictions: For Research Use only

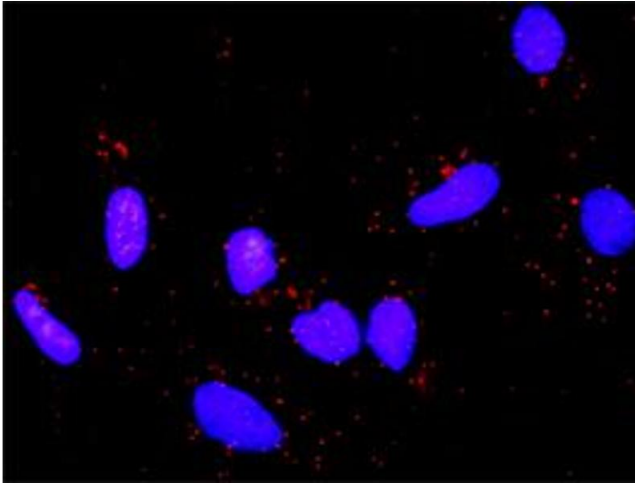
Handling

Buffer: In 1x PBS, pH 7.4

Handling Advice: Aliquot to avoid repeated freezing and thawing.

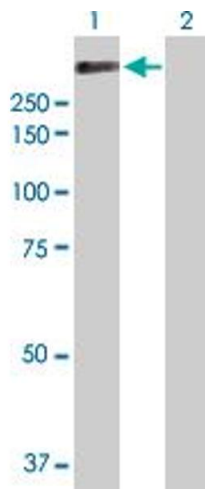
Storage: -20 °C

Storage Comment: Store at -20°C or lower. Aliquot to avoid repeated freezing and thawing.



Proximity Ligation Assay

Image 1. Proximity Ligation Analysis of protein-protein interactions between APC and CTNNB1. HeLa cells were stained with anti-APC rabbit purified polyclonal 1:1200 and anti-CTNNB1 mouse monoclonal antibody 1:50. Each red dot represents the detection of protein-protein interaction complex, and nuclei were counterstained with DAPI (blue).



Western Blotting

Image 2. Western Blot analysis of APC expression in transfected 293T cell line by APC MaxPab polyclonal antibody.

Lane 1: APC transfected lysate(312.73 KDa).

Lane 2: Non-transfected lysate.