



[Go to Product page](#)

Datasheet for ABIN513406

## anti-Survivin antibody (AA 1-142)

### 4 Images

#### Overview

Quantity:	100 µg
Target:	Survivin (BIRC5)
Binding Specificity:	AA 1-142
Reactivity:	Human
Host:	Rabbit
Clonality:	Polyclonal
Conjugate:	This Survivin antibody is un-conjugated
Application:	Western Blotting (WB), Immunofluorescence (IF), Proximity Ligation Assay (PLA)

#### Product Details

Purpose:	Rabbit polyclonal antibody raised against a full-length human BIRC5 protein.
Immunogen:	BIRC5 (AAH08718.1, 1 a.a. ~ 142 a.a) full-length human protein.
Sequence:	MGAPTLPPAW QPFLKDHRIS TFKNWPFLG CACTPERMAE AGFIHCPTEN EPDLAQCFFC FKELEGWEPD DDPIEEHKKH SSGCAFLSVK KQFEELTLGE FLKLDREKAK NKIAKETNNK KKEFEETAKK VRRRAIEQLAA MD
Cross-Reactivity:	Human
Characteristics:	Antibody reactive against mammalian transfected lysate.

#### Target Details

Target:	Survivin (BIRC5)
---------	------------------

## Target Details

Alternative Name:	BIRC5 ( <a href="#">BIRC5 Products</a> )
Background:	Full Gene Name: baculoviral IAP repeat-containing 5 Synonyms: API4,EPR-1
Gene ID:	332
Pathways:	<a href="#">Apoptosis</a> , <a href="#">Cell Division Cycle</a> , <a href="#">Nuclear Hormone Receptor Binding</a>

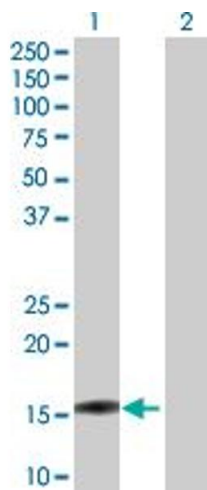
## Application Details

Application Notes:	Optimal working dilution should be determined by the investigator.
Restrictions:	For Research Use only

## Handling

Buffer:	In 1x PBS, pH 7.4
Handling Advice:	Aliquot to avoid repeated freezing and thawing.
Storage:	-20 °C
Storage Comment:	Store at -20°C or lower. Aliquot to avoid repeated freezing and thawing.

## Images

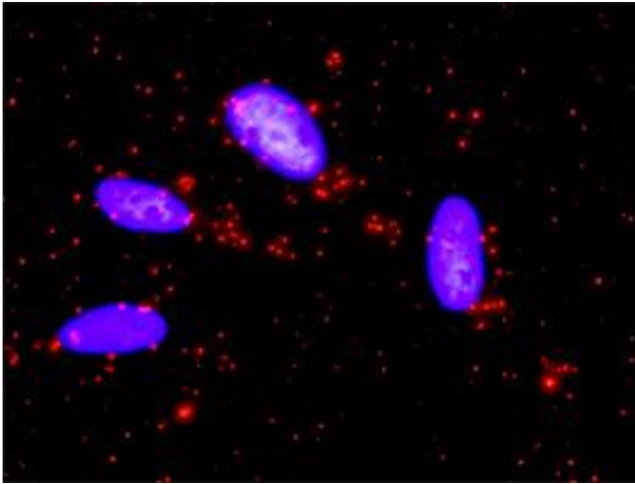


### Western Blotting

**Image 1.** Western Blot analysis of BIRC5 expression in transfected 293T cell line by BIRC5 MaxPab polyclonal antibody.

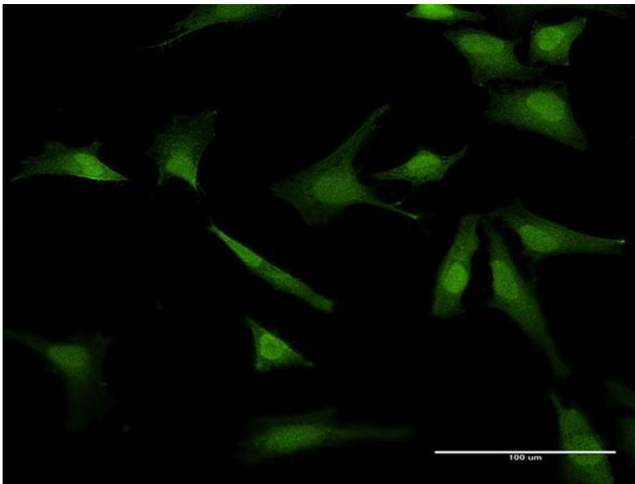
Lane 1: BIRC5 transfected lysate(16.40 KDa).

Lane 2: Non-transfected lysate.



### Proximity Ligation Assay

**Image 2.** Proximity Ligation Analysis of protein-protein interactions between BIRC5 and CASP9. HeLa cells were stained with anti-BIRC5 rabbit purified polyclonal 1:1200 and anti-CASP9 mouse monoclonal antibody 1:50. Each red dot represents the detection of protein-protein interaction complex, and nuclei were counterstained with DAPI (blue).



### Immunofluorescence

**Image 3.** Immunofluorescence of purified MaxPab antibody to BIRC5 on HeLa cell. [antibody concentration 10 ug/ml]

Please check the [product details page](#) for more images. Overall 4 images are available for ABIN513406.