



Datasheet for ABIN513431

anti-Prostate Specific Antigen antibody (AA 1-261)



[Go to Product page](#)

2 Images

Overview

Quantity:	100 µg
Target:	Prostate Specific Antigen (PSA)
Binding Specificity:	AA 1-261
Reactivity:	Human
Host:	Mouse
Clonality:	Monoclonal
Conjugate:	This Prostate Specific Antigen antibody is un-conjugated
Application:	ELISA, Immunofluorescence (IF)

Product Details

Purpose:	Mouse monoclonal antibody raised against a full length recombinant KLK3.
Immunogen:	KLK3 (AAH05307, 1 a.a. ~ 261 a.a) full-length recombinant protein with GST tag. MW of the GST tag alone is 26 KDa.
Sequence:	MWVPPVFLTL SVTWIGAAPL ILSRIVGGWE CEKHSQPWQV LVASRGRAVC GGVLVHPQWV LTAAH CIRNK SVILLGRHSL FHPEDTGQVF QVSHSFPHPL YDVSLLKNRF LRP GDDSSHD LMLLRLSEPA ELTDAVKVMD LPTQEPALGT TCYASGWGSI EPEEFLTPKK LQCVDLHVIS NDVCAQVHPQ KVTKLMLCAG RWTGGKSTCS GDSGGPLVCN GVLQGITSWG SEPCALPERP SLYTKVVHYR KWIKDTIVAN P
Clone:	1B1
Isotype:	IgG2b
Cross-Reactivity:	Human

Product Details

Characteristics: Antibody Reactive Against Recombinant Protein.

Target Details

Target: Prostate Specific Antigen (PSA)

Alternative Name: KLK3 ([PSA Products](#))

Background: Full Gene Name: kallikrein-related peptidase 3
Synonyms: APS, KLK2A1, PSA, hK3

Gene ID: 354

Pathways: [Complement System](#)

Application Details

Application Notes: Optimal working dilution should be determined by the investigator.

Restrictions: For Research Use only

Handling

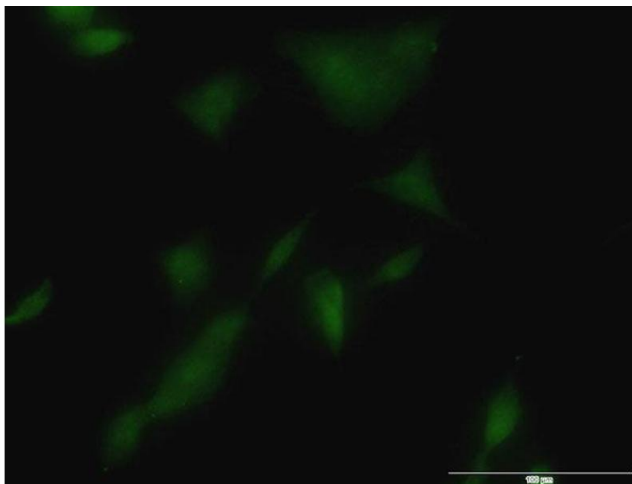
Buffer: In 1x PBS, pH 7.4

Handling Advice: Aliquot to avoid repeated freezing and thawing.

Storage: -20 °C

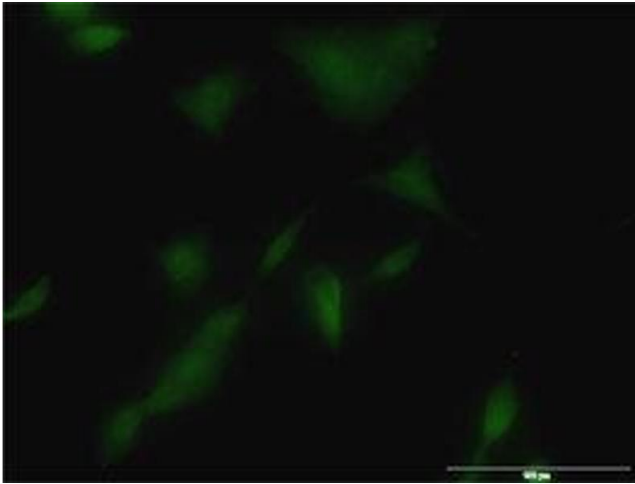
Storage Comment: Store at -20°C or lower. Aliquot to avoid repeated freezing and thawing.

Images



Immunofluorescence

Image 1. Immunofluorescence of monoclonal antibody to KLK3 on A-549 cell. (antibody concentration 10 μ g/mL)



Immunofluorescence

Image 2. Immunofluorescence of monoclonal antibody to KLK3 on A-549 cell. (antibody concentration 10 μ g/mL)