



[Go to Product page](#)

Datasheet for ABIN513445  
**anti-FASL antibody (AA 1-281)**

2 Images

Overview

Quantity:	100 µg
Target:	FASL
Binding Specificity:	AA 1-281
Reactivity:	Human
Host:	Rabbit
Clonality:	Polyclonal
Conjugate:	This FASL antibody is un-conjugated
Application:	Western Blotting (WB), Proximity Ligation Assay (PLA)

Product Details

Purpose:	Rabbit polyclonal antibody raised against a full-length human FASLG protein.
Immunogen:	FASLG (AAH17502.1, 1 a.a. ~ 281 a.a) full-length human protein.
Sequence:	MQQPFNYPYP QIYWVDSSAS SPWAPP GTVL PCPTSVPRRP GQRRPPPPPP PPPLPPPPPP PPLPPLPLPP LKKRGNHSTG LCLLMFFMV LVALVGLGLG MFQLFHLQKE LAELRESTSQ MHTASSLEKQ IGHPSPPEK KELRKVAHLT GKSNSRSMPL EWEDTYGIVL LSGVKYKKGK LVINETGLYF VYSKVYFRGQ SCNNLPLSHK VYMRNSKYPQ DLVMMEGKMM SYCTTGQMWA RSSYLGA VFN LTSADHLYVN VSELSLVNFE ESQTFGLYK L
Cross-Reactivity:	Human
Characteristics:	Antibody reactive against mammalian transfected lysate.

## Target Details

Target:	FASL
Alternative Name:	FASLG ( <a href="#">FASL Products</a> )
Background:	Full Gene Name: Fas ligand (TNF superfamily, member 6) Synonyms: APT1LG1,CD178,CD95L,FASL,TNFSF6
Gene ID:	356
NCBI Accession:	<a href="#">NM_000639</a>
Pathways:	<a href="#">Apoptosis</a> , <a href="#">EGFR Signaling Pathway</a> , <a href="#">Production of Molecular Mediator of Immune Response</a> , <a href="#">Positive Regulation of Endopeptidase Activity</a>

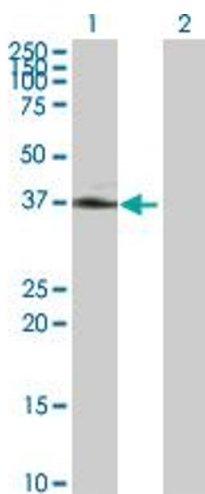
## Application Details

Application Notes:	Optimal working dilution should be determined by the investigator.
Restrictions:	For Research Use only

## Handling

Buffer:	In 1x PBS, pH 7.4
Handling Advice:	Aliquot to avoid repeated freezing and thawing.
Storage:	-20 °C
Storage Comment:	Store at -20°C or lower. Aliquot to avoid repeated freezing and thawing.

## Images

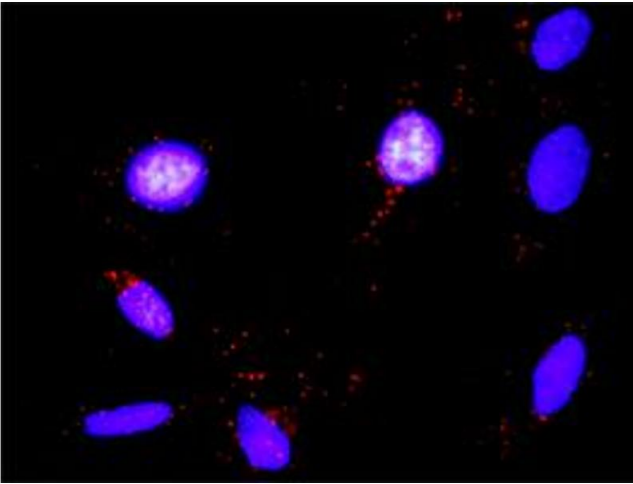


### Western Blotting

**Image 1.** Western Blot analysis of FASLG expression in transfected 293T cell line by FASLG MaxPab polyclonal antibody.

Lane 1: FASLG transfected lysate(31.50 KDa).

Lane 2: Non-transfected lysate.



### Proximity Ligation Assay

**Image 2.** Proximity Ligation Analysis of protein-protein interactions between FASLG and FYN. HeLa cells were stained with anti-FASLG rabbit purified polyclonal 1:1200 and anti-FYN mouse monoclonal antibody 1:50. Each red dot represents the detection of protein-protein interaction complex, and nuclei were counterstained with DAPI (blue).