

Datasheet for ABIN513472  
**anti-RHOA antibody (AA 1-193)**[Go to Product page](#)

## 2 Images

## Overview

Quantity:	100 µg
Target:	RHOA
Binding Specificity:	AA 1-193
Reactivity:	Human
Host:	Rabbit
Clonality:	Polyclonal
Conjugate:	This RHOA antibody is un-conjugated
Application:	Western Blotting (WB), Proximity Ligation Assay (PLA)

## Product Details

Purpose:	Rabbit polyclonal antibody raised against a full-length human RHOA protein.
Immunogen:	RHOA (AAH01360.1, 1 a.a. ~ 193 a.a) full-length human protein.
Sequence:	MAAIRKKLVI VGDGACGKTC LLIVFSKDQF PEVYVPTVFE NYVADIEVDG KQVELALWDT AGQEDYDRLR PLSYPDTDVI LMCFSIDSPD SLENIPEKWT PEVKHFPCNV PIILVGNKKD LRNDEHTRRE LAKMKQEPVK PEEGRDMANR IGAFGYMECS AKTKDGVREV FEMATRAALQ ARRGKKKSGC LVL
Cross-Reactivity:	Human
Characteristics:	Antibody reactive against mammalian transfected lysate.

## Target Details

Target:	RHOA
---------	------

Target Details

Alternative Name:	RHOA ( <a href="#">RHOA Products</a> )
Background:	Full Gene Name: ras homolog gene family, member A Synonyms: ARH12,ARHA,RHO12,RHOH12
Gene ID:	387
NCBI Accession:	<a href="#">NM_001664</a>
Pathways:	<a href="#">Microtubule Dynamics</a> , <a href="#">WNT Signaling</a> , <a href="#">Neurotrophin Signaling Pathway</a> , <a href="#">Intracellular Steroid Hormone Receptor Signaling Pathway</a> , <a href="#">Regulation of Intracellular Steroid Hormone Receptor Signaling</a> , <a href="#">Regulation of Actin Filament Polymerization</a> , <a href="#">Cell-Cell Junction Organization</a> , <a href="#">Positive Regulation of Endopeptidase Activity</a> , <a href="#">Signaling Events mediated by VEGFR1 and VEGFR2</a> , <a href="#">Thromboxane A2 Receptor Signaling</a> , <a href="#">SARS-CoV-2 Protein Interactome</a>

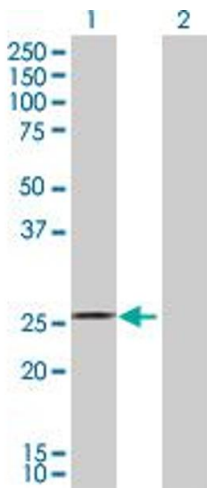
Application Details

Application Notes:	Optimal working dilution should be determined by the investigator.
Restrictions:	For Research Use only

Handling

Buffer:	In 1x PBS, pH 7.4
Handling Advice:	Aliquot to avoid repeated freezing and thawing.
Storage:	-20 °C
Storage Comment:	Store at -20°C or lower. Aliquot to avoid repeated freezing and thawing.

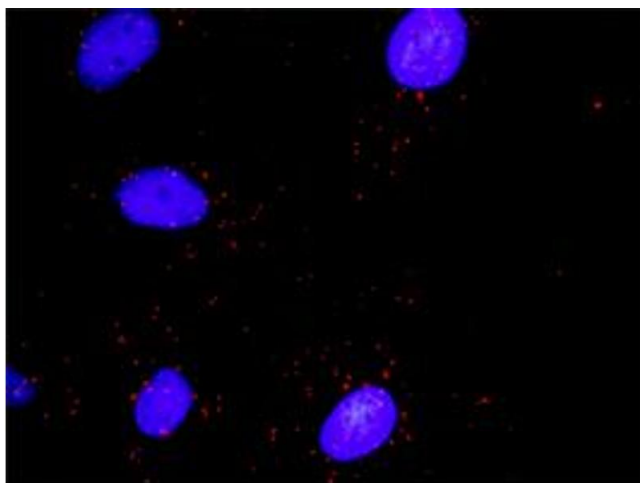
Images



Western Blotting

**Image 1.** Western Blot analysis of RHOA expression in transfected 293T cell line by RHOA MaxPab polyclonal antibody.

Lane 1: RHOA transfected lysate(21.80 KDa).  
Lane 2: Non-transfected lysate.



### Proximity Ligation Assay

**Image 2.** Proximity Ligation Analysis of protein-protein interactions between RHOA and DAAM1. HeLa cells were stained with anti-RHOA rabbit purified polyclonal 1:1200 and anti-DAAM1 mouse monoclonal antibody 1:50. Each red dot represents the detection of protein-protein interaction complex, and nuclei were counterstained with DAPI (blue).