

Datasheet for ABIN513556

**anti-Aspartate beta Hydroxylase antibody (AA 1-270)**[Go to Product page](#)

## 1 Image

## Overview

Quantity:	100 µg
Target:	Aspartate beta Hydroxylase (ASPH)
Binding Specificity:	AA 1-270
Reactivity:	Human
Host:	Rabbit
Clonality:	Polyclonal
Conjugate:	This Aspartate beta Hydroxylase antibody is un-conjugated
Application:	Western Blotting (WB)

## Product Details

Purpose:	Rabbit polyclonal antibody raised against a full-length human ASPH protein.
Immunogen:	ASPH (AAH25236.1, 1 a.a. ~ 270 a.a) full-length human protein.
Sequence:	MAQRKNAKSS GNSSSSGSGS GSTSAGSSSP GARRETKHGG HKNRKGGLS GTSFFTWMV IALLGVWTSV AVVWFDLVDY EEVLGKLGIV DADGDGDFDV DDAKVLLGLK ERSTSEPAVP PEEAEPHTEP EEQVPVEAEP QNIEDEAKEQ IQSLLHEMVH AEHETEHSYH VEETVSQDCN QDMEEMMSEQ ENPDSSEPVV EDERLHHDTD DVTYQVYEEQ AVYEPLENEG IEITEVTAPP EDNPVEDSQV IVEEVSIFPV EEQQEVPDPT
Cross-Reactivity:	Human
Characteristics:	Antibody reactive against mammalian transfected lysate.

## Target Details

Target:	Aspartate beta Hydroxylase (ASPH)
Alternative Name:	ASPH ( <a href="#">ASPH Products</a> )
Background:	Full Gene Name: aspartate beta-hydroxylase Synonyms: BAH,CASQ2BP1,HAAH,JCTN,junctin
Gene ID:	444
Pathways:	<a href="#">Positive Regulation of Endopeptidase Activity</a>

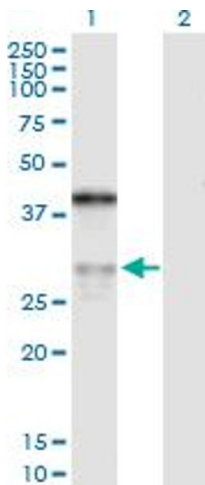
## Application Details

Application Notes:	Optimal working dilution should be determined by the investigator.
Restrictions:	For Research Use only

## Handling

Buffer:	In 1x PBS, pH 7.4
Handling Advice:	Aliquot to avoid repeated freezing and thawing.
Storage:	-20 °C
Storage Comment:	Store at -20°C or lower. Aliquot to avoid repeated freezing and thawing.

## Images



### Western Blotting

**Image 1.** Western Blot analysis of ASPH expression in transfected 293T cell line by ASPH MaxPab polyclonal antibody.

Lane 1: ASPH transfected lysate(29.81 KDa).

Lane 2: Non-transfected lysate.